

# CORNER RECORD

Agency Index

542

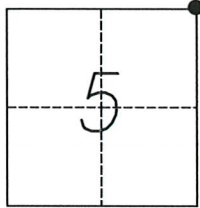
Document Number

City of \_\_\_\_\_ County of MERCED, California

Brief Legal Description NORTHEAST COR. SECTION 5, T.9 S., R.13 E MOUNT DIABLO BASE AND MERIDIAN

### CORNER TYPE

### COORDINATES (Optional)



Government Corner  Control   
 Meander  Property   
 Rancho  Other

N. \_\_\_\_\_ E. \_\_\_\_\_

Elevation \_\_\_\_\_

Units Metric  U.S. Survey Foot

Horizontal Datum \_\_\_\_\_

Zone \_\_\_\_\_ Epoch Date \_\_\_\_\_

Date of Survey NOVEMBER 11, 2019

Vertical Datum \_\_\_\_\_

Complies with Public Resources Code §§8801-8819

Complies with Public Resources Code §§8890-8902

PLS Act Ref.:  8765(d)  8771  8773  Other:

Corner/Monument:  Left as found  Established  Rebuilt  Pre-Construction  
 Found and tagged  Reestablished  Referenced  Post-Construction

Narrative of corner identified and monument as found, set, reset, replaced, or removed:

See sheet #2 for description(s):

**MONUMENT MAY BE DISTURBED DUE TO CONSTRUCTION**

### SURVEYOR'S STATEMENT

This Corner Record was prepared by me or under my direction in conformance with

the Professional Land Surveyors' Act on MARCH 16, 2020

Signed [Signature] P.L.S. or R.C.E. No. 9417



### COUNTY SURVEYOR'S STATEMENT

This Corner Record was received MARCH 20, 2020

and examined and filed MARCH 25, 2020

Signed Zachary T. Janz P.L.S. or R.C.E. No. 8664

Title COUNTY SURVEYOR

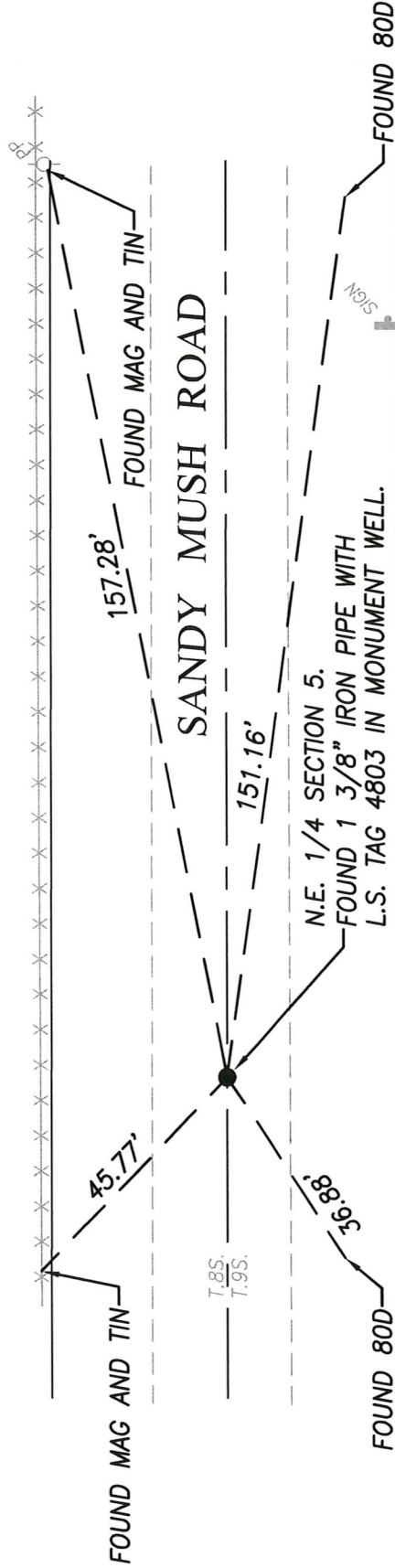
County Surveyor's Comment





SCALE: 1" = 30'

S.E. 1/4 SECTION 32 T8S, R13E



REMAINDER 64-PM-40

EAST 1/2 NORTHWEST 1/4 SECTION 5 T9S, R13E