

No 541

### CORNER RECORD

COUNTY OF MERCED T. 8S. R. 13E. M.D. MERIDIAN CALIFORNIA  
 CORNER TYPE: GOV'T. CORNER  MEANDER  RANCHO  CONTROL  OTHER   
 CORNER IDENTIFICATION — DATE OF VISIT September 1979



*Southeast corner of section 31. Purpose to replace corner destroyed during County Road reconstruction.*

CORNER — LEFT AS FOUND  FOUND AND TAGGED  REESTABLISHED OBLITERATED CORNER  REBUILT

**PHYSICAL DESCRIPTION OF CORNER FOUND; EVIDENCE AND METHOD USED TO IDENTIFY OR REESTABLISH**

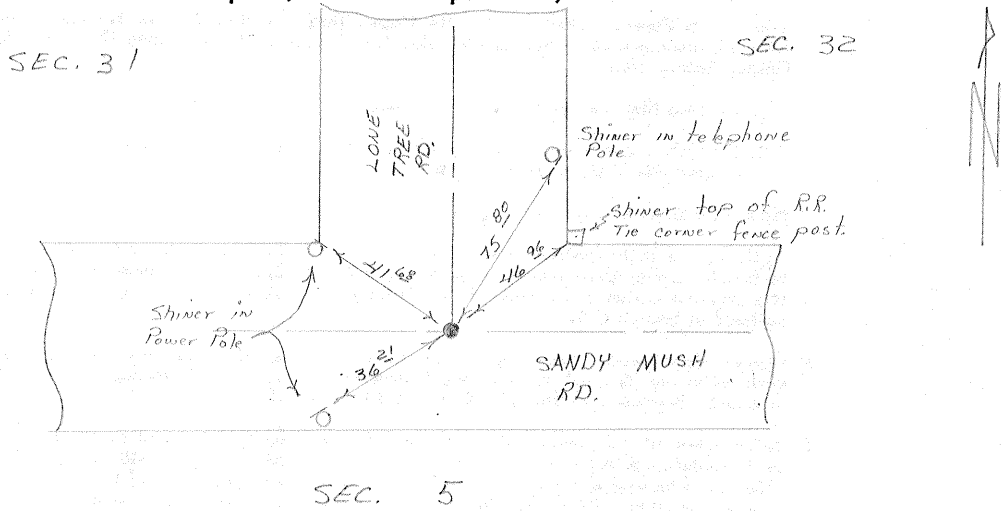
*Found 5/8" iron rod over 1 1/2" outside diameter iron pipe  
 Used swing ties to locate.*

**PHYSICAL DESCRIPTION OF MONUMENTS REBUILT OR PERPETUATED**

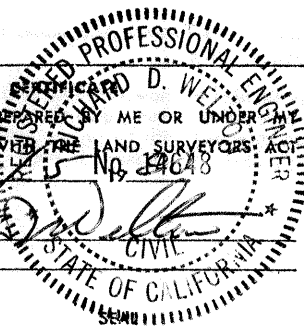
*Set 2" inside diameter iron pipe in survey encasement at section corner location.*

CALIFORNIA COORDINATE SYSTEM ORDER: FIRST  SECOND  THIRD   
 STATIONS USED: NGS (USC & GS)  STATE  COUNTY  OTHER  STATION \_\_\_\_\_ STATION \_\_\_\_\_  
 ZONE \_\_\_\_\_ ELEVATION \_\_\_\_\_ NORTHINGS (Y) \_\_\_\_\_ EASTINGS (X) \_\_\_\_\_

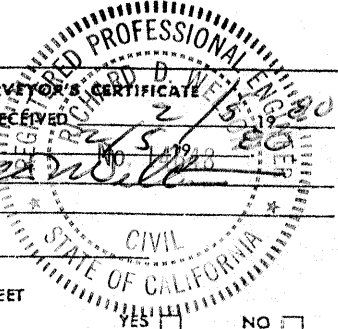
**SKETCH: (Include reference tie or witness points, remarks and topo of area)**



**SURVEYOR'S CERTIFICATE**  
 THIS CORNER RECORD WAS PREPARED BY ME OR UNDER MY DIRECTION IN CONFORMANCE WITH THE LAND SURVEYORS' ACT ON \_\_\_\_\_  
 SIGNED: *[Signature]*  
 L.S. or R.C.E. No.: \_\_\_\_\_



**COUNTY SURVEYOR'S CERTIFICATE**  
 THE CORNER RECORD WAS RECEIVED AND EXAMINED AND FILED \_\_\_\_\_ BY: *[Signature]*  
 TITLE: \_\_\_\_\_  
 DOCUMENT No. 541  
 STATEMENT ON BACK OF SHEET



YES  NO