

CORNER RECORD

Agency Index 541

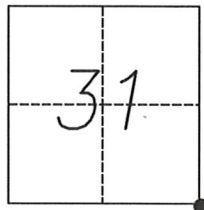
Document Number _____

City of _____ County of MERCED, California

Brief Legal Description SOUTHEAST COR. SECTION 31, T.8 S., R.13 E MOUNT DIABLO BASE AND MERIDIAN

CORNER TYPE

COORDINATES (Optional)



Government Corner Control
Meander Property
Rancho Other

N. _____ E. _____

Elevation _____

Units Metric U.S. Survey Foot

Horizontal Datum _____

Zone _____ Epoch Date _____

Date of Survey SEPTEMBER 10, 2019 Vertical Datum _____

Complies with Public Resources Code §§8801-8819

Complies with Public Resources Code §§8890-8902

PLS Act Ref.: 8765(d) 8771 8773 Other:

Corner/Monument: Left as found Established Rebuilt Pre-Construction

Found and tagged Reestablished Referenced Post-Construction

Narrative of corner identified and monument as found, set, reset, replaced, or removed:

See sheet #2 for description(s):

MONUMENT MAY BE DISTURBED DUE TO CONSTRUCTION

SURVEYOR'S STATEMENT

This Corner Record was prepared by me or under my direction in conformance with

the Professional Land Surveyors' Act on 6 Nov 2019

Signed [Signature] P.L.S. or R.C.E. No. 5417



COUNTY SURVEYOR'S STATEMENT

This Corner Record was received DECEMBER 23, 2019

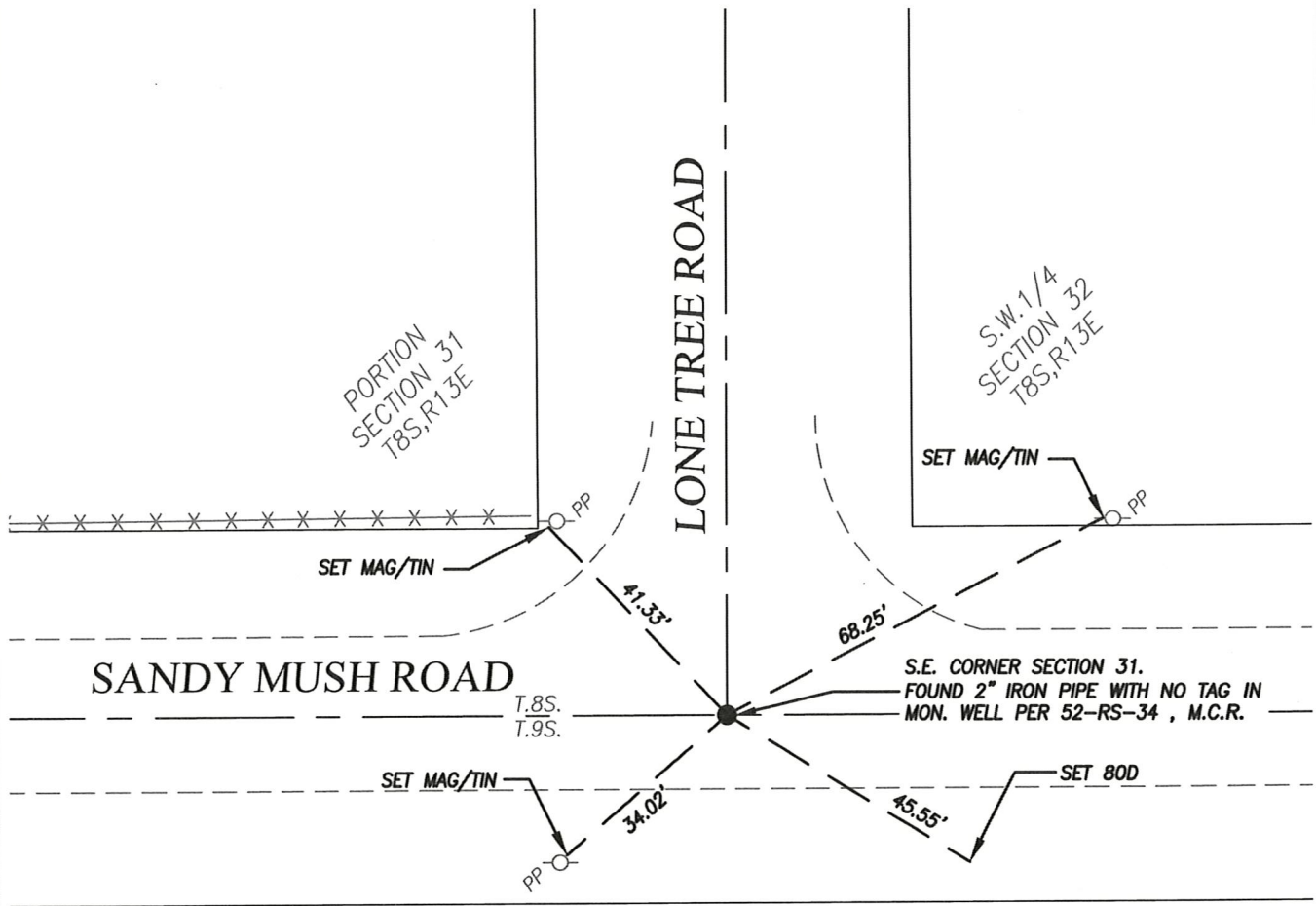
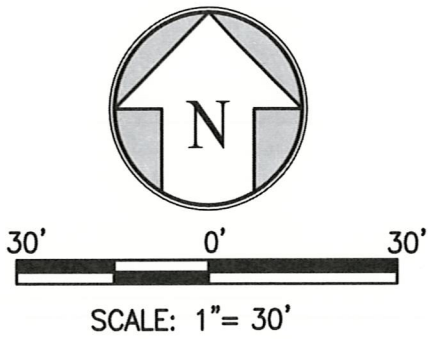
and examined and filed JANUARY 6, 2020

Signed [Signature] P.L.S. or R.C.E. No. 8664

Title COUNTY SURVEYOR

County Surveyor's Comment





PARCEL 1
103-PM-32