

### CORNER RECORD

COUNTY OF MERCED T. 9S. R. 13E. M.D. MERIDIAN CALIFORNIA  
 CORNER TYPE: GOV'T. CORNER  MEANDER  RANCHO  CONTROL  OTHER   
 CORNER IDENTIFICATION — DATE OF VISIT SEPTEMBER 1979



Northeast corner section 5

Purpose: To replace corner destroyed during County road reconstruction

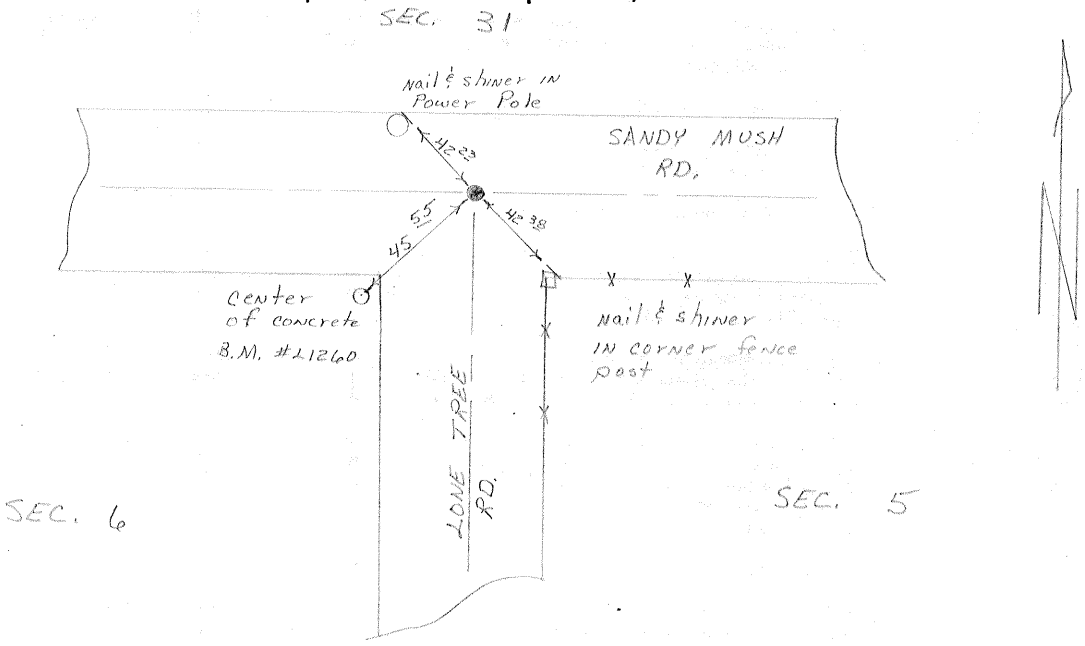
CORNER — LEFT AS FOUND  FOUND AND TAGGED  REESTABLISHED OBLITERATED CORNER  REBUILT

PHYSICAL DESCRIPTION OF CORNER FOUND; EVIDENCE AND METHOD USED TO IDENTIFY OR REESTABLISH  
 Found 1 3/4" outside diameter iron pipe. Found by using swing ties

PHYSICAL DESCRIPTION OF MONUMENTS REBUILT OR PERPETUATED  
 Set 2" inside diameter iron pipe at section corner location.  
 Set inside survey encasement

CALIFORNIA COORDINATE SYSTEM ORDER: FIRST  SECOND  THIRD   
 STATIONS USED: NGS (USC & GS)  STATE  COUNTY  OTHER  STATION \_\_\_\_\_ STATION \_\_\_\_\_  
 ZONE \_\_\_\_\_ ELEVATION \_\_\_\_\_ NORTHINGS (Y) \_\_\_\_\_ EASTINGS (X) \_\_\_\_\_

SKETCH: (Include reference tie or witness points, remarks and topo of area)



SURVEYOR'S SEAL: REGISTERED PROFESSIONAL ENGINEER  
 THIS CORNER RECORD WAS PREPARED BY ME OR UNDER MY DIRECTION IN CONFORMANCE WITH THE LAND SURVEYORS ACT ON 2/5/79 No. 14678  
 SIGNED: [Signature]  
 L.S. or R.C.E. No.: \_\_\_\_\_

COUNTY SURVEYOR'S CERTIFICATE  
 THE CORNER RECORD WAS RECEIVED AND EXAMINED AND FILED BY: [Signature] No. 14678  
 TITLE: \_\_\_\_\_  
 DOCUMENT No. 540  
 STATEMENT ON BACK OF SHEET