

CORNER RECORD

COUNTY OF MERCED T. 85 R. 13E M.D. MERIDIAN CALIFORNIA
 CORNER TYPE: GOVT. CORNER MEANDER RANCHO CONTROL OTHER
 CORNER IDENTIFICATION — DATE OF VISIT September 1979



Southwest corner of section 31.
 Purpose: To replace corner destroyed during County Road reconstruction.

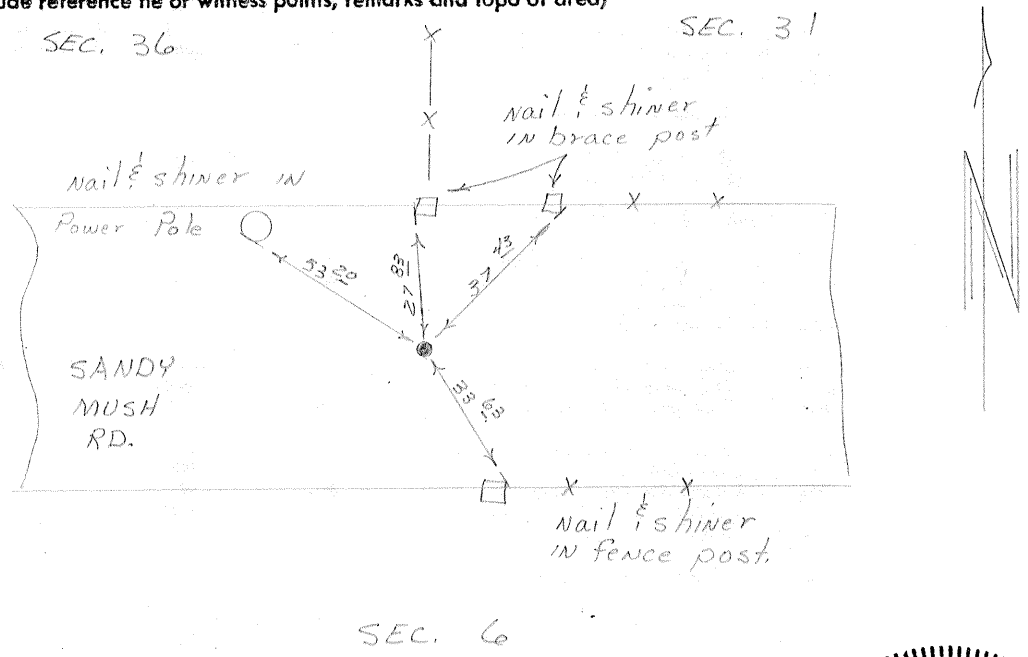
CORNER — LEFT AS FOUND FOUND AND TAGGED REESTABLISHED OBLITERATED CORNER REBUILT

PHYSICAL DESCRIPTION OF CORNER FOUND; EVIDENCE AND METHOD USED TO IDENTIFY OR REESTABLISH
 Found 3" x 3" post. Found by using swing ties

PHYSICAL DESCRIPTION OF MONUMENTS REBUILT OR PERPETUATED
 Set 2" inside diameter iron pipe in survey encasement at section corner location

CALIFORNIA COORDINATE SYSTEM ORDER: FIRST SECOND THIRD
 STATIONS USED: NGS (USC & GS) STATE COUNTY OTHER STATION _____ STATION _____
 ZONE _____ ELEVATION _____ NORTHINGS (Y) _____ EASTINGS (X) _____

SKETCH: (Include reference tie or witness points, remarks and topo of area)



SURVEYOR'S CERTIFICATE
 THIS CORNER RECORD WAS PREPARED BY ME OR UNDER MY DIRECTION IN CONFORMANCE WITH THE LAND SURVEYORS ACT ON _____
 SIGNED: _____
 L.S. or R.C.E. No.: _____

COUNTY SURVEYOR'S CERTIFICATE
 THE CORNER RECORD WAS RECEIVED AND EXAMINED AND FOUND CORRECT BY: _____
 TITLE: _____
 DOCUMENT No. 539
 STATEMENT ON BACK OF SHEET YES NO