

CORNER RECORD

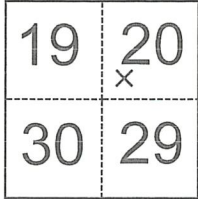
Agency Index 461

Document Number _____

City of _____ County of _____ Merced _____, California

Brief Legal Description Corner Common to Sections 19,20,30,and 29; T9S; R9E; MD Base and Meridian

CORNER TYPE



- Government Corner
- Meander
- Rancho
- Control
- Property
- Other

Date of Survey October 2, 2018

COORDINATES (Optional)

N. _____ E. _____

Elevation _____

Units Metric U.S. Survey Foot

Horizontal Datum _____

Zone _____ Epoch Date _____

Vertical Datum _____

Complies with Public Resources Code §§8801-8819

Complies with Public Resources Code §§8890-8902

PLS Act Ref.:

8765(d)

8771

8773

Other:

Corner/
Monument:

Left as found

Established

Rebuilt

Pre-Construction

Found and tagged

Reestablished

Referenced

Post-Construction

Narrative of corner identified and monument as found, set, reset, replaced, or removed:

See sheet #2 for description(s):

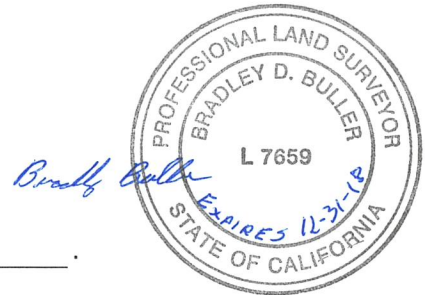
Found 1" Iron Pipe with Yellow Plastic Plug stamped "LS 5355" down 2.1 feet in a monument well, per Document 461.

SURVEYOR'S STATEMENT

This Corner Record was prepared by me or under my direction in conformance with

the Professional Land Surveyors' Act on October 30, 2018

Signed Bradley Buller P.L.S. or R.C.E. No. L 7659



COUNTY SURVEYOR'S STATEMENT

This Corner Record was received NOVEMBER 30, 2018

and examined and filed DECEMBER 28, 2018

Signed Zachary T. Janz P.L.S. or R.C.E. No. 8664

Title COUNTY SURVEYOR

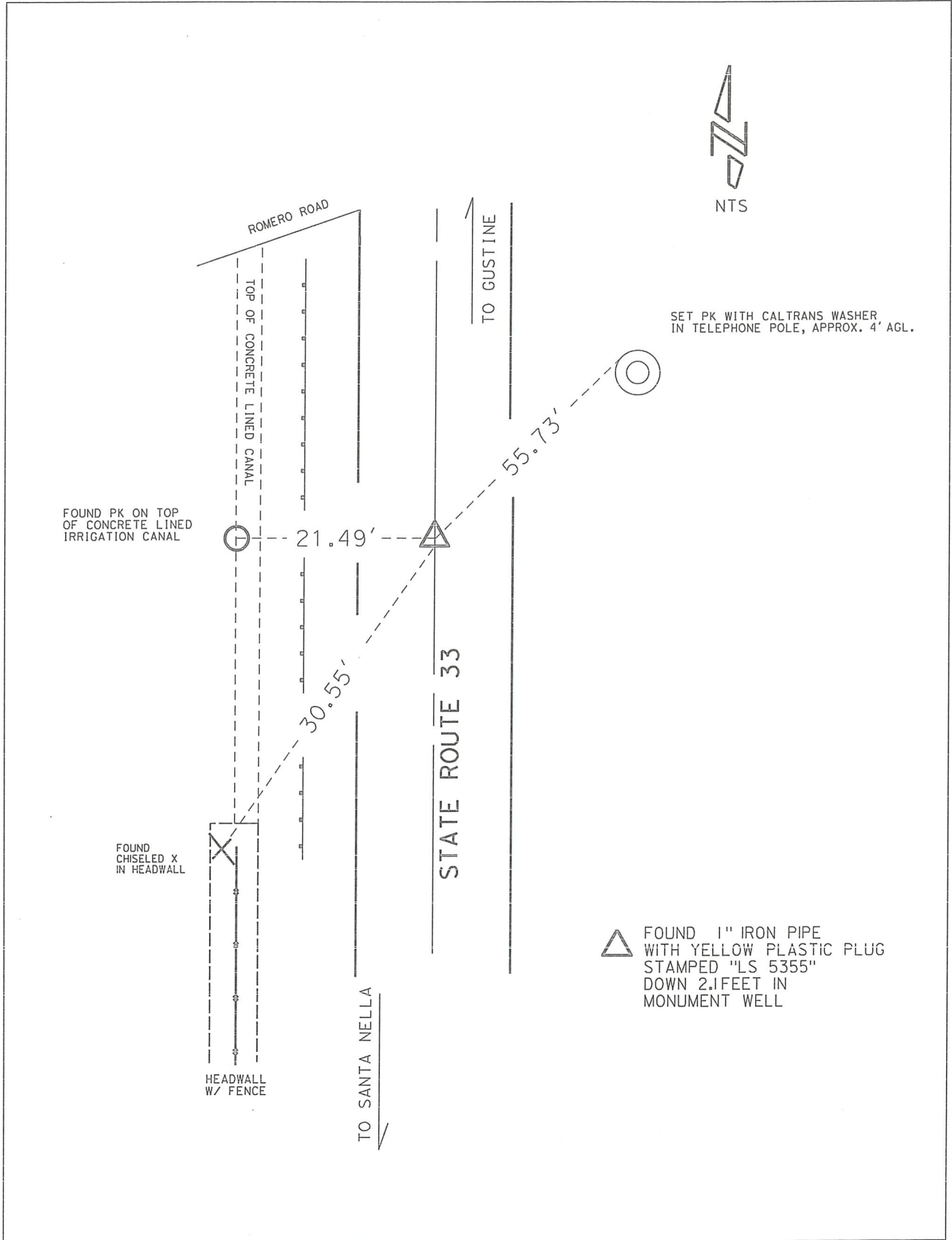


County Surveyor's Comment

2" IP TAGGED L.S. 5355 PER CORNER RECORD 461 FILED AUGUST 26, 2010, AND 55 R.S. 1.



NTS



FOUND PK ON TOP OF CONCRETE LINED IRRIGATION CANAL

FOUND CHISELED X IN HEADWALL

SET PK WITH CALTRANS WASHER IN TELEPHONE POLE, APPROX. 4' AGL.

FOUND 1" IRON PIPE WITH YELLOW PLASTIC PLUG STAMPED "LS 5355" DOWN 2.1 FEET IN MONUMENT WELL

ROMERO ROAD

TOP OF CONCRETE LINED CANAL

STATE ROUTE 33

TO GUSTINE

TO SANTA NELLA

HEADWALL W/ FENCE

21.49'

30.55'

55.73'