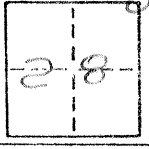


CORNER RECORD

COUNTY OF Merced T. 8 S. R. 15 E. M.D.B. MERIDIAN CALIFORNIA
 CORNER TYPE: GOVT. CORNER MEANDER RANCHO CONTROL OTHER
 CORNER IDENTIFICATION — DATE OF VISIT May 18 1983



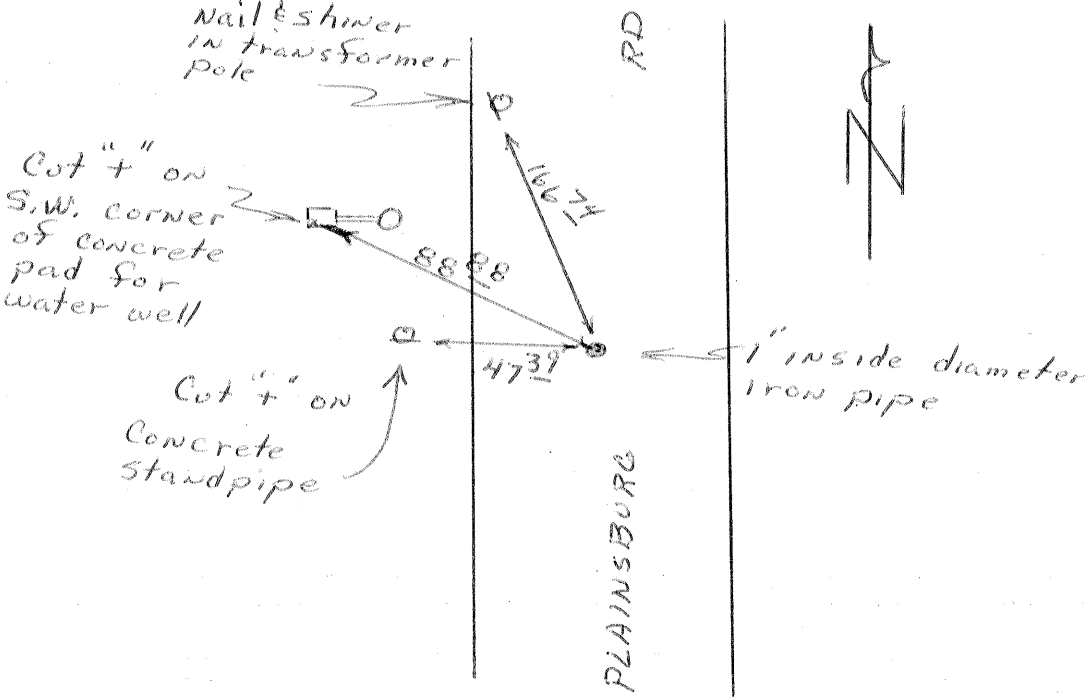
CORNER — LEFT AS FOUND FOUND AND TAGGED REESTABLISHED OBLITERATED CORNER REBUILT

PHYSICAL DESCRIPTION OF CORNER FOUND; EVIDENCE AND METHOD USED TO IDENTIFY OR REESTABLISH
Found 2" inside diameter iron pipe 3 feet down.
Found by using ties in field book F.A.S. 555(3) page 2.

PHYSICAL DESCRIPTION OF MONUMENTS REBUILT OR PERPETUATED
Set 1" inside diameter iron pipe and tagged "County Surveyor" over 2" inside diameter iron pipe, in survey encasement.

CALIFORNIA COORDINATE SYSTEM ORDER: FIRST SECOND THIRD
 STATIONS USED: NGS (USC & GS) STATE COUNTY OTHER STATION _____ STATION _____
 ZONE _____ ELEVATION _____ NORTHINGS (Y) _____ EASTINGS (X) _____

SKETCH: (Include reference tie or witness points, remarks and topo of area)



Prepared by
 Gary Grindler
 Party Chief
 Ties in F.B. F.A.S. 555(3)
 page 2
 Gary Grindler

SURVEYOR'S CERTIFICATE
 THIS CORNER RECORD WAS PREPARED BY ME OR UNDER MY DIRECTION IN CONFORMANCE WITH THE LAND SURVEYORS ACT ON _____ 19_____
 SIGNED: _____
 L.S. or R.C.E. No.: _____

COUNTY SURVEYOR'S CERTIFICATE
 THE CORNER RECORD WAS RECEIVED _____ 19_____
 AND EXAMINED AND FILED _____ 19_____
 BY: [Signature]
 TITLE: County Surveyor
 DOCUMENT No. 442
 STATEMENT ON BACK OF SHEET YES NO

SEAL