

CORNER RECORD

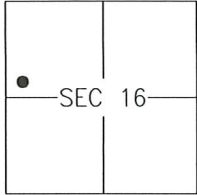
Agency Index 413-ZZ

Document Number _____

City of MERCED

County of MERCED, California

Brief Legal Description MONUMENTS AT REAR LOT 30, PER 76 O.P. 9-11, M.C.R



T7S/R14E

CORNER TYPE

- Government Corner Control
 Meander Property
 Rancho Other

Date of Survey 2019-07-02

COORDINATES (Optional)

- N. _____ E. _____
 Elevation _____
 Units Metric U.S. Survey Foot
 Horizontal Datum _____
 Zone _____ Epoch Date _____
 Vertical Datum: _____
 Complies with Public Resources Code §§8801-8819
 Complies with Public Resources Code §§8890-8902

PLS Act Ref.: 8765(d) 8771 8773

Other: _____

Corner/Monument: Left as found Established Rebuilt Pre-Construction
 Found and tagged Reestablished Referenced Post-Construction

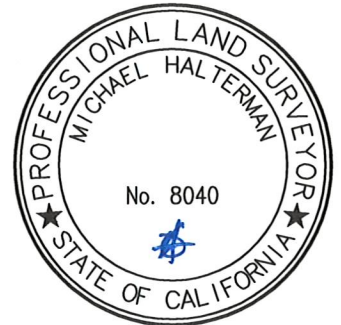
Narrative of corner identified and monument as found and set or reset:

See sheet #2 for description(s):

SURVEYOR'S STATEMENT

This Corner Record was prepared by me or under my direction in conformance with the Land Surveyor's Act on 30 July, 2019.

Signed [Signature] P.L.S. or R.C.E. No.: 8040



COUNTY SURVEYOR'S STATEMENT

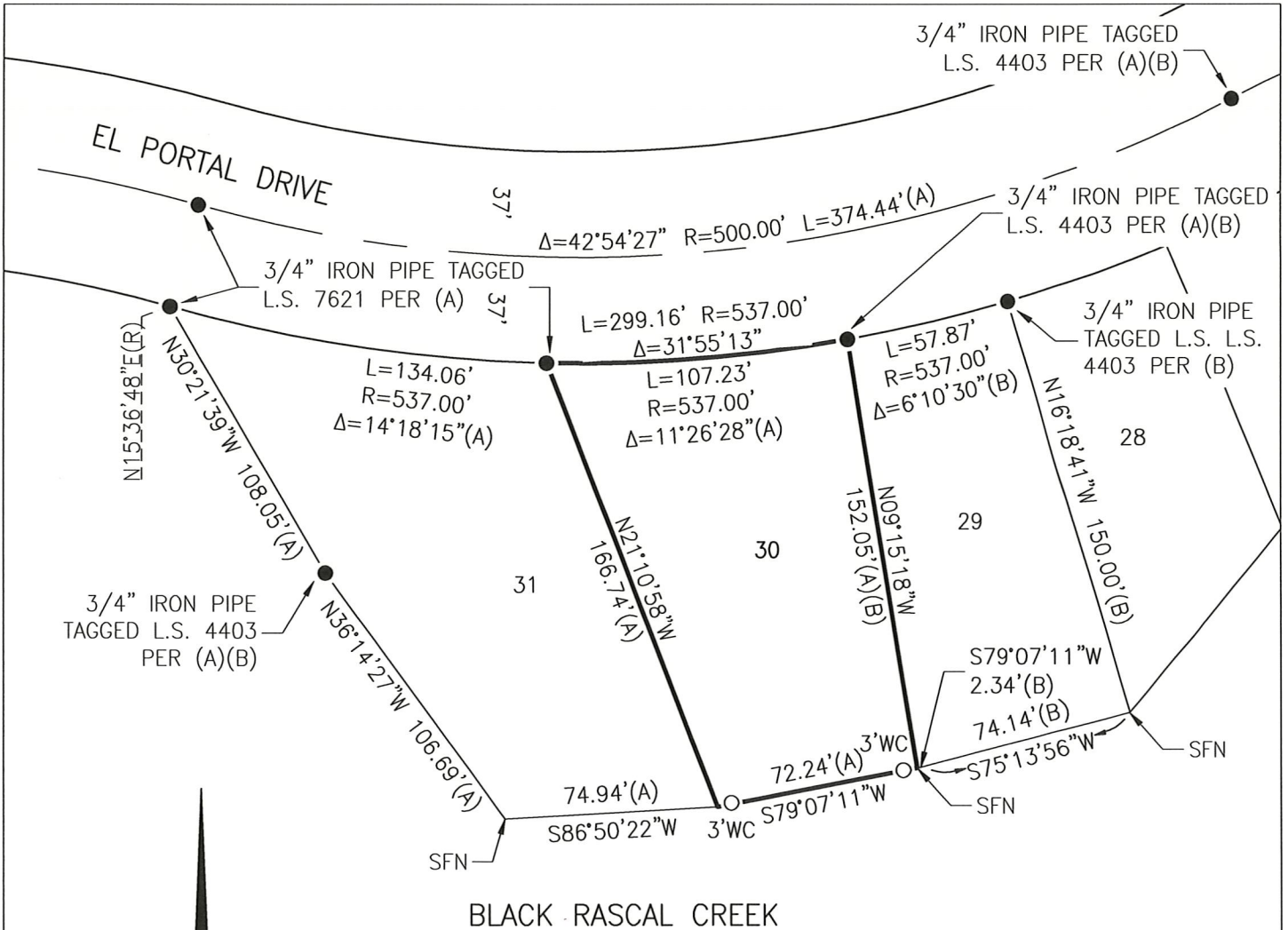
This Corner Record was received AUGUST 1st, 2019 and examined and filed AUGUST 2nd, 2019.

Signed Zach T. Janz P.L.S. or R.C.E. No.: 8664

Title COUNTY SURVEYOR

County Surveyor's Comment _____





SCALE 1" = 60'

REFERENCE

- (A) VOLUME 76 OF OFFICIAL PLATS, AT PAGES 9-11, M.C.R.
- (B) VOLUME 41 OF OFFICIAL PLATS, AT PAGES 21-25, M.C.R.

LEGEND:

- FOUND 3/4" IRON PIPE, OR AS NOTED
- SET 3/4" IRON PIPE TAGGED L.S. 8040 AS WITNESS CORNER
- M.C.R. MERCED COUNTY RECORDS
- WC WITNESS CORNER