

CORNER RECORD

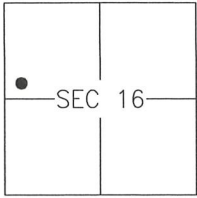
Agency Index 413-YY

Document Number _____

City of MERCED

County of MERCED, California

Brief Legal Description MONUMENT AT REAR LOTS 39-42, PER 76 O.P. 9-11, M.C.R.



CORNER TYPE

- Government Corner Control
 Meander Property
 Rancho Other

Date of Survey 2019-03-26

COORDINATES (Optional)

- N. _____ E. _____
 Elevation _____
 Units Metric U.S. Survey Foot
 Horizontal Datum _____
 Zone _____ Epoch Date _____
 Vertical Datum: _____
 Complies with Public Resources Code §§8801-8819
 Complies with Public Resources Code §§8890-8902

PLS Act Ref.: 8765(d) 8771 8773 Other: _____

Corner/Monument: Left as found Established Rebuilt Pre-Construction
 Found and tagged Reestablished Referenced Post-Construction

Narrative of corner identified and monument as found and set or reset:

See sheet #2 for description(s):

SURVEYOR'S STATEMENT

This Corner Record was prepared by me or under my direction in conformance with the Land Surveyor's Act on 11 APRIL, 2019.

Signed [Signature] P.L.S. or R.C.E. No.: 8040



COUNTY SURVEYOR'S STATEMENT

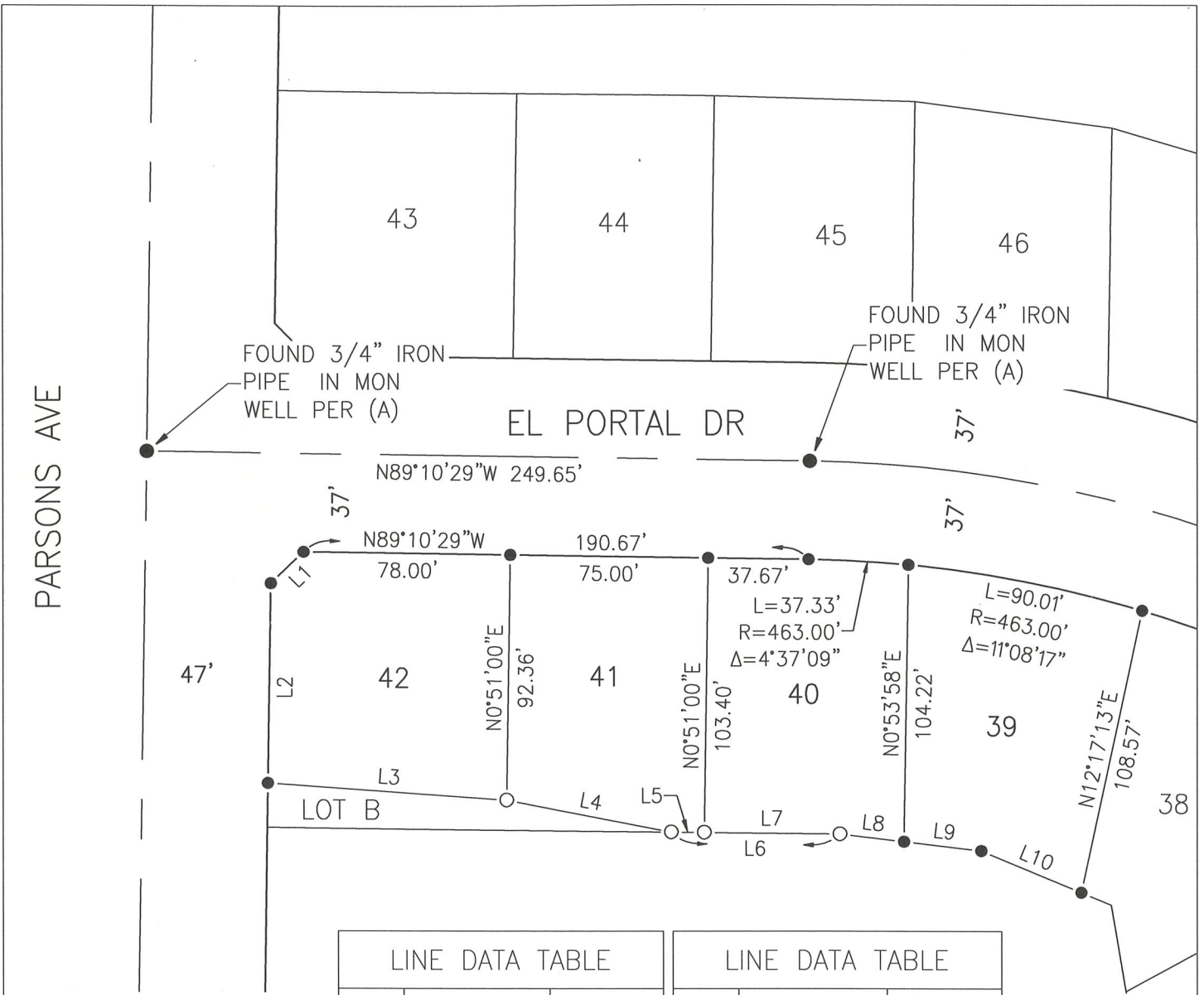
This Corner Record was received APRIL 15, 2019 and examined and filed APRIL 16, 2019.

Signed Zach T. Janz P.L.S. or R.C.E. No.: 8664

Title COUNTY SURVEYOR

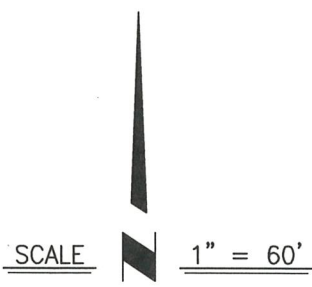
County Surveyor's Comment _____





LINE DATA TABLE		
LINE	BEARING	DISTANCE
L1	N45°50'15"E	16.97'
L2	N0°51'00"E	75.33'
L3	N85°58'19"W	90.14'
L4	N79°08'19"W	63.59'
L5	N89°23'05"W	12.38'

LINE DATA TABLE		
LINE	BEARING	DISTANCE
L6	N89°23'05"W	63.25'
L7	N89°23'05"W	50.85'
L8	N83°12'06"W	24.15'
L9	N83°12'06"W	29.11'
L10	N67°36'19"W	40.92'



REFERENCE

(A) VOLUME 76 OF OFFICIAL PLATS, AT PAGES 9-11

LEGEND:

- FOUND 3/4" IRON PIPE, TAGGED L.S. 7621, PER (A)
- SET NAIL WITH BRASS TAG, L.S. 8040 IN CONCRETE

MER 3