

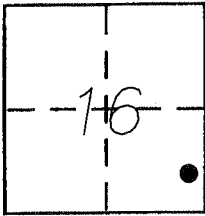
CORNER RECORD

Document Number 413-XX

City of _____

County of MERCED, California

Brief Legal Description PORTION OF LOT 128, 4 O.P. 43, M.C.R., PARCEL 1 OF 9 P.M. 31, M.C.R.



T7S, R14E

CORNER TYPE

Government Corner Control
Meander Property
Rancho Other
Date of Survey 8-12-2013

COORDINATES (Optional)

N. _____
E. _____
Zone _____ NAD27 NAD83
NAD83 Epoch _____
Elev. _____
Vert. Datum: NGVD29 NAVD88
Meas. Units: Metric Imperial

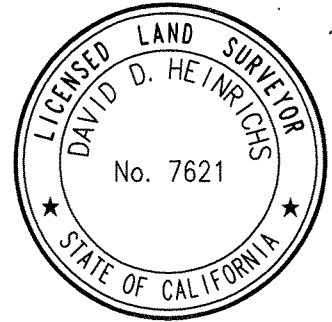
Corner -- Left as found Found and tagged Established Reestablished Rebuilt

Identification and type of corner found: Evidence used to identify or procedure used to establish or reestablish the corner:
FOUND ADJACENT MONUMENTS OF RECORD, RESET CORNERS. SEE PAGE 2 OF 2 OF THIS RECORD

A description of the physical condition of the monument as found and as set or reset: _____
SET 3/4" IRON PIPE WITH L.S. 7621 TAG ON BOUNDARY FOR PARCEL 1, 9 P.M. 31, M.C.R.
SEE PAGE 2 OF 2 OF THIS RECORD.

SURVEYOR'S STATEMENT

This Corner Record was prepared by me or under my direction in conformance with
the Land Surveyor's Act on OCTOBER 1, 2013
Signed [Signature] P.L.S or R.C.E. No. 7621

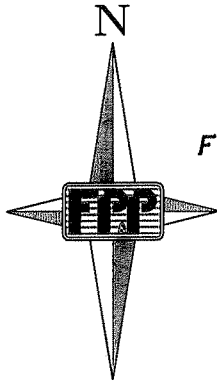


COUNTY SURVEYOR'S STATEMENT

This Corner Record was received October 2, 2013
and examined and filed October 3, 2013
Signed [Signature] P.L.S or R.C.E. No. 4895
Title County Surveyor



County Surveyor's Comment _____



SCALE 1" = 200'

LEGEND

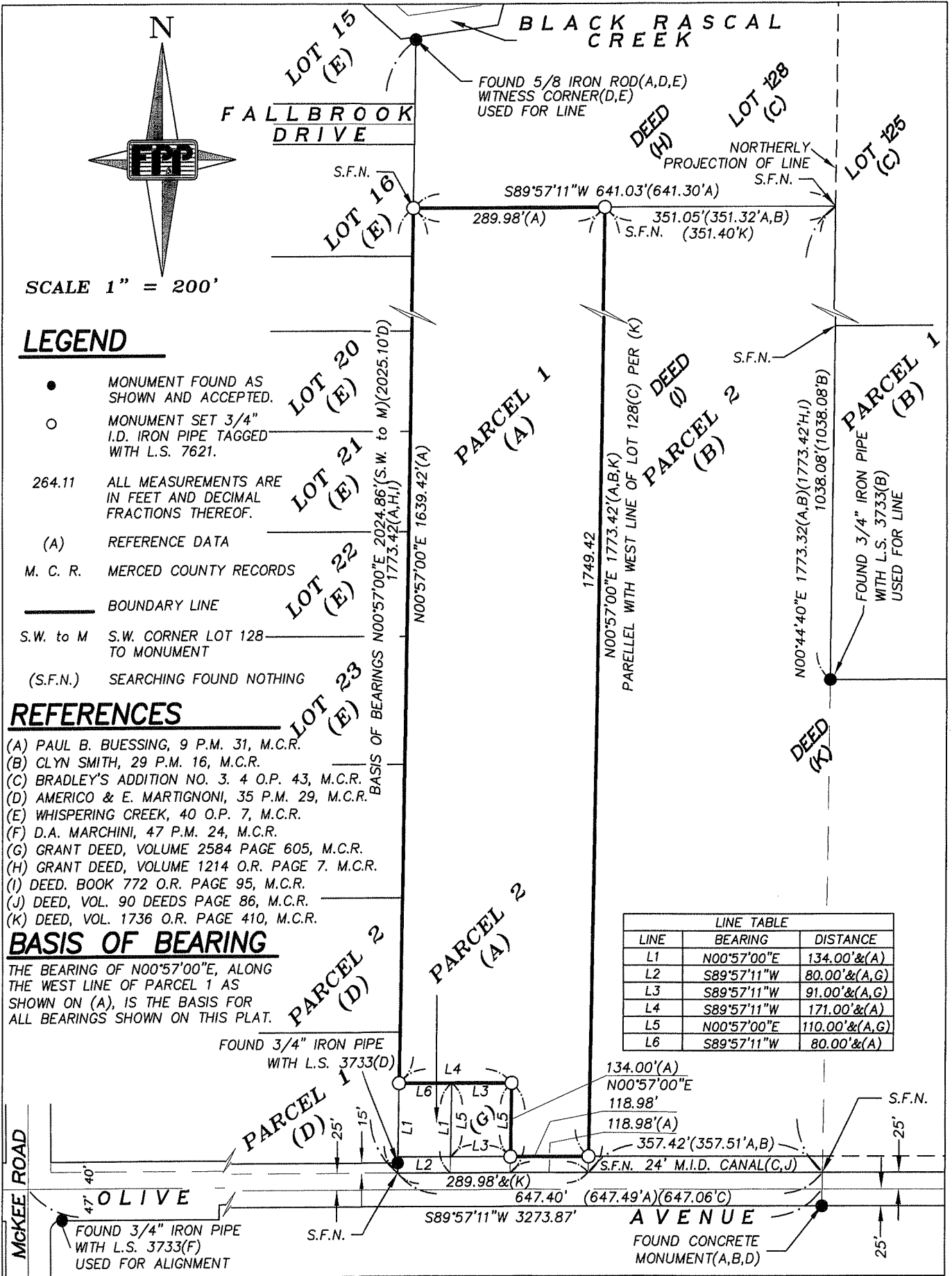
- MONUMENT FOUND AS SHOWN AND ACCEPTED.
- MONUMENT SET 3/4" I.D. IRON PIPE TAGGED WITH L.S. 7621.
- 264.11 ALL MEASUREMENTS ARE IN FEET AND DECIMAL FRACTIONS THEREOF.
- (A) REFERENCE DATA
- M. C. R. MERCED COUNTY RECORDS
- BOUNDARY LINE
- S.W. to M S.W. CORNER LOT 128 TO MONUMENT
- (S.F.N.) SEARCHING FOUND NOTHING

REFERENCES

- (A) PAUL B. BUESSING, 9 P.M. 31, M.C.R.
- (B) CLYN SMITH, 29 P.M. 16, M.C.R.
- (C) BRADLEY'S ADDITION NO. 3. 4 O.P. 43, M.C.R.
- (D) AMERICO & E. MARTIGNONI, 35 P.M. 29, M.C.R.
- (E) WHISPERING CREEK, 40 O.P. 7, M.C.R.
- (F) D.A. MARCHINI, 47 P.M. 24, M.C.R.
- (G) GRANT DEED, VOLUME 2584 PAGE 605, M.C.R.
- (H) GRANT DEED, VOLUME 1214 O.R. PAGE 7. M.C.R.
- (I) DEED. BOOK 772 O.R. PAGE 95, M.C.R.
- (J) DEED, VOL. 90 DEEDS PAGE 86, M.C.R.
- (K) DEED, VOL. 1736 O.R. PAGE 410, M.C.R.

BASIS OF BEARING

THE BEARING OF N00°57'00"E, ALONG THE WEST LINE OF PARCEL 1 AS SHOWN ON (A), IS THE BASIS FOR ALL BEARINGS SHOWN ON THIS PLAT.



LINE	BEARING	DISTANCE
L1	N00°57'00"E	134.00'&(A)
L2	S89°57'11"W	80.00'&(A,G)
L3	S89°57'11"W	91.00'&(A,G)
L4	S89°57'11"W	171.00'&(A)
L5	N00°57'00"E	110.00'&(A,G)
L6	S89°57'11"W	80.00'&(A)