

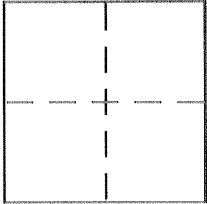
CORNER RECORD

Document Number 413-SS

City of MERCED

County of MERCED, California

Brief Legal Description LOTS 52-56, 90-95, 103-105, CAMELOT No 2 - PHASE 2, 58 O.P. 38-40



CORNER TYPE

Government Corner Control
Meander Property
Rancho Other
Date of Survey 4/10/02

COORDINATES (Optional)

N. _____
E. _____
Zone _____ NAD27 NAD83
NAD83 Epoch _____
Elev. _____
Vert. Datum: NGVD29 NAVD88
Meas. Units: Metric Imperial

Corner -- Left as found Found and tagged Established Reestablished Rebuilt

Identification and type of corner found: Evidence used to identify or procedure used to establish or reestablish the corner:

THESE MONUMENTS WERE SET DURING THE ORIGINAL MONUMENTING OF THIS SUBDIVISION AS REFERENCE MONUMENTS FOR CONSTRUCTION. ORIGINAL LOT CORNERS ON THE NORTH, EAST AND SOUTH LINES OF THIS SUBDIVISION ARE UNDER THE BLOCK WALLS CONSTRUCTED ON THE PROPERTY LINES AND ARE UNUSABLE, DISTURBED OR DESTROYED.

A description of the physical condition of the monument as found and as set or reset: _____

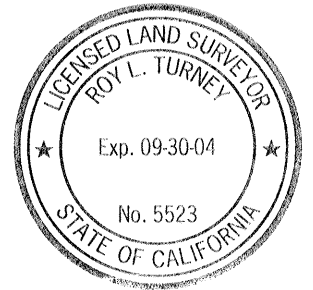
SURVEYOR'S STATEMENT

This Corner Record was prepared by me or under my direction in conformance with the Land Surveyor's Act on July 20, 2004
Signed [Signature] P.L.S or R.C.E. No. L.S. 6944

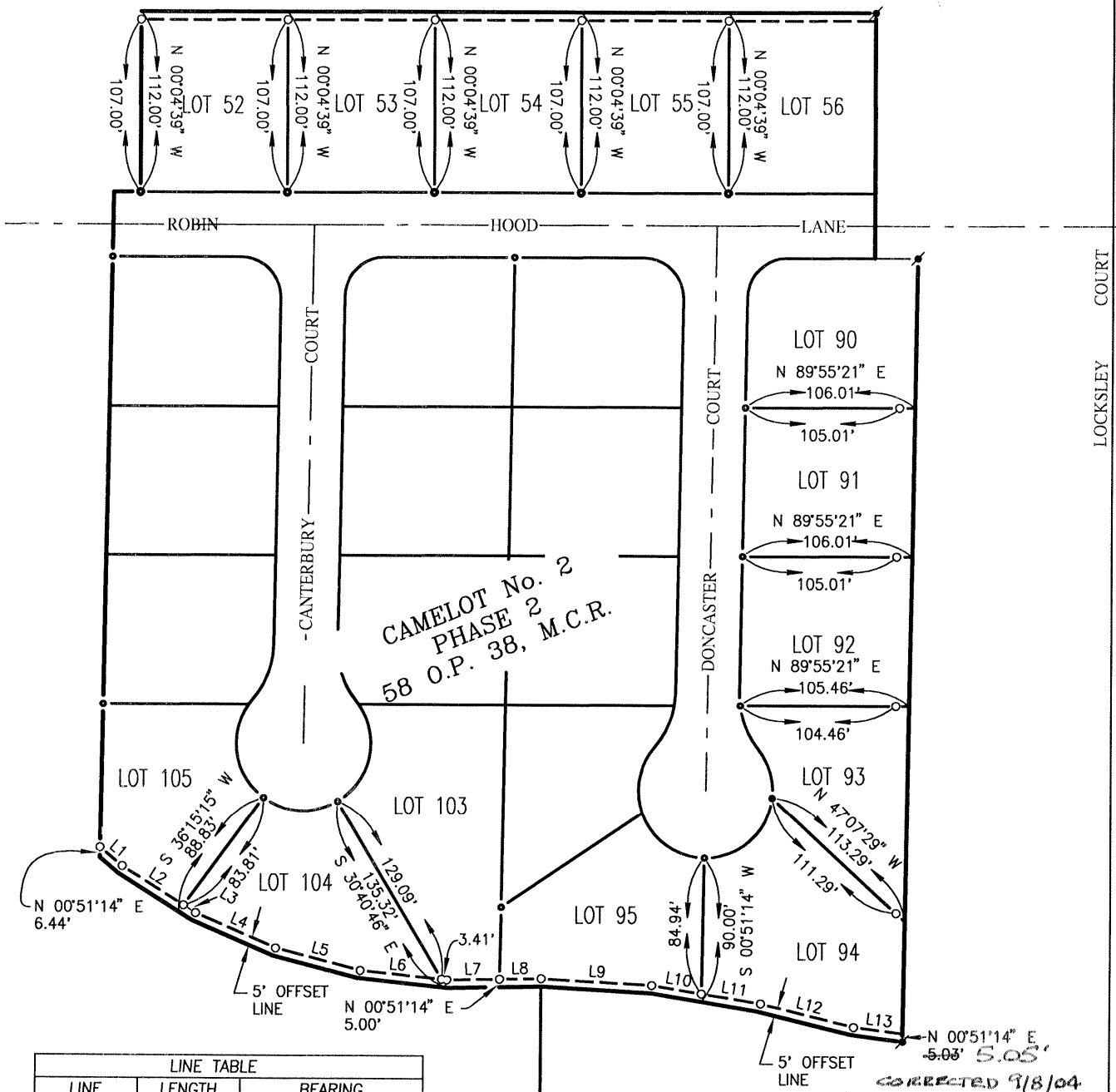


COUNTY SURVEYOR'S STATEMENT

This Corner Record was received 9-9-04
and examined and filed 9-10-04
Signed [Signature] P.L.S or R.C.E. No. 5523
Title DEPUTY CO. SUR.



County Surveyor's Comment _____



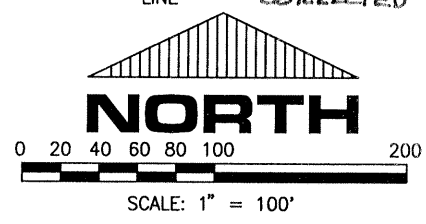
**CAMELOT No. 2
PHASE 2
58 O.P. 38, M.C.R.**

LINE TABLE		
LINE	LENGTH	BEARING
L1	18.15	S50°06'14"E
L2	45.68	S57°48'34"E
L3	9.02	S57°48'34"E
L4	54.65	S66°33'55"E
L5	54.65	S75°19'17"E
L6	54.73	S84°04'38"E
L7	33.14	N88°58'58"E
L8	25.96	N88°58'58"E
L9	69.07	S86°50'29"E
L10	31.38	S80°40'00"E
L11	37.71	S80°40'00"E
L12	59.92	S76°06'27"E
L13	30.53	S82°36'01"E

30.79 S81°27'48"E
CORRECTED 9/8/04 RKG

TO ANGLE POINT

- WITNESS CORNER, SET 3/4" IRON PIPE, L.S. 6944
- FOUND 3/4" IRON PIPE, L.S. 6944 PER 58 O.P. 38, M.C.R.
- ✦ FOUND 3/4" IRON PIPE, L.S. 4403 PER 58 O.P. 38, M.C.R.



CORRECTED 9/8/04
RKG