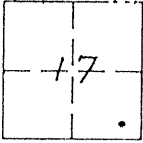


CORNER RECORD

COUNTY OF MERCED T. 7 S R. 14 E MOB & M. MERIDIAN CALIFORNIA

CORNER TYPE: GOV'T. CORNER  MEANDER  RANCHO  CONTROL  OTHER

CORNER IDENTIFICATION - DATE OF VISIT NOV. 19 90



CORNER — LEFT AS FOUND  FOUND AND TAGGED  REESTABLISHED OBLITERATED CORNER  REBUILT

PHYSICAL DESCRIPTION OF CORNER FOUND; EVIDENCE AND METHOD USED TO IDENTIFY OR REESTABLISH.

*Fd. 3/4" IP Ls 656 on the center line Queens Circle, Olive Park Subdivision, Vol. 15, O.P., Pg. 41, M.C.R. monument removed with reconstruction of Olive Ave.*

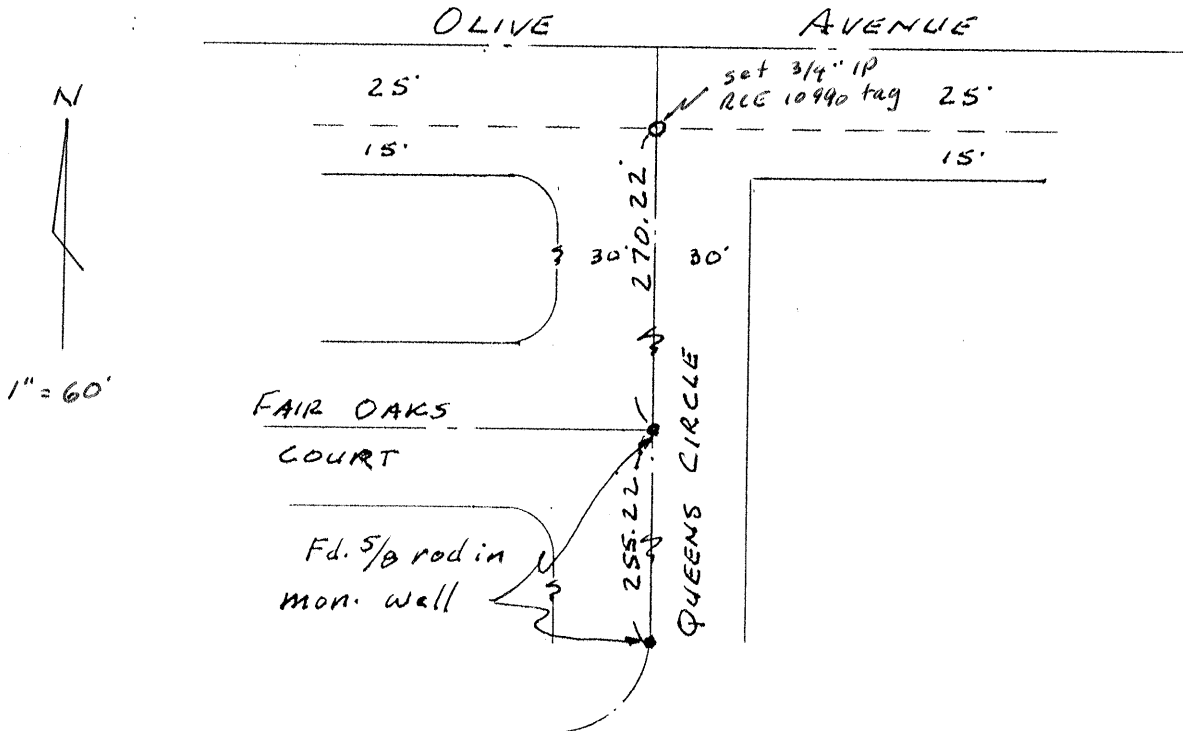
PHYSICAL DESCRIPTION OF MONUMENTS REBUILT OR PERPETUATED.

*Set 3/4" IP with RCE 10990 tag.*

ORNIA COORDINATE SYSTEM ORDER: FIRST  SECOND  THIRD   
 STATIONS USED: NGS (USC & GS) STATE  COUNTY  OTHER  STATION \_\_\_\_\_ STATION \_\_\_\_\_  
 ZONE \_\_\_\_\_ ELEVATION \_\_\_\_\_ NORTHINGS (Y) \_\_\_\_\_ EASTINGS (X) \_\_\_\_\_

(Fold)

SKETCH: (Include reference tie or witness points, remarks and topo of area)

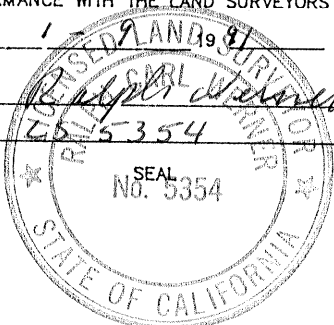


SURVEYOR'S CERTIFICATE

THIS CORNER RECORD WAS PREPARED BY ME OR UNDER MY DIRECTION IN CONFORMANCE WITH THE LAND SURVEYORS ACT ON \_\_\_\_\_

SIGNED Carl Williams

L.S. or R.C.E. No. 5354



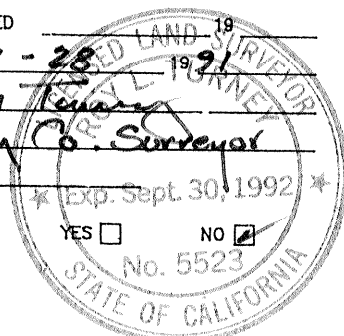
COUNTY SURVEYOR'S CERTIFICATE

THE CORNER RECORD WAS RECEIVED AND EXAMINED AND FILED 1-28-91 1991

BY: Boyd Kennerly  
 TITLE: Deputy Co. Surveyor

DOCUMENT No. 410 88

STATEMENT ON BACK OF SHEET YES  NO



410-QQ