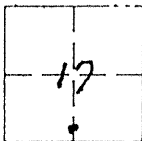


CORNER RECORD

COUNTY OF MERCED T. 7 S R. 14 E MD B E M MERIDIAN CALIFORNIA

CORNER TYPE: GOVT. CORNER MEANDER RANCHO CONTROL OTHER

CORNER IDENTIFICATION - DATE OF VISIT NOV. 19 90



CORNER — LEFT AS FOUND FOUND AND TAGGED REESTABLISHED OBLITERATED CORNER REBUILT

PHYSICAL DESCRIPTION OF CORNER FOUND; EVIDENCE AND METHOD USED TO IDENTIFY OR REESTABLISH.

Fd. 1 1/4" IP, accepted for N.E. cor. Lot 1, Sycamore Subdivision, Vol. 10, o.p., Pg. 44, M.S.R. Monument removed with reconstruction of Olive Ave.

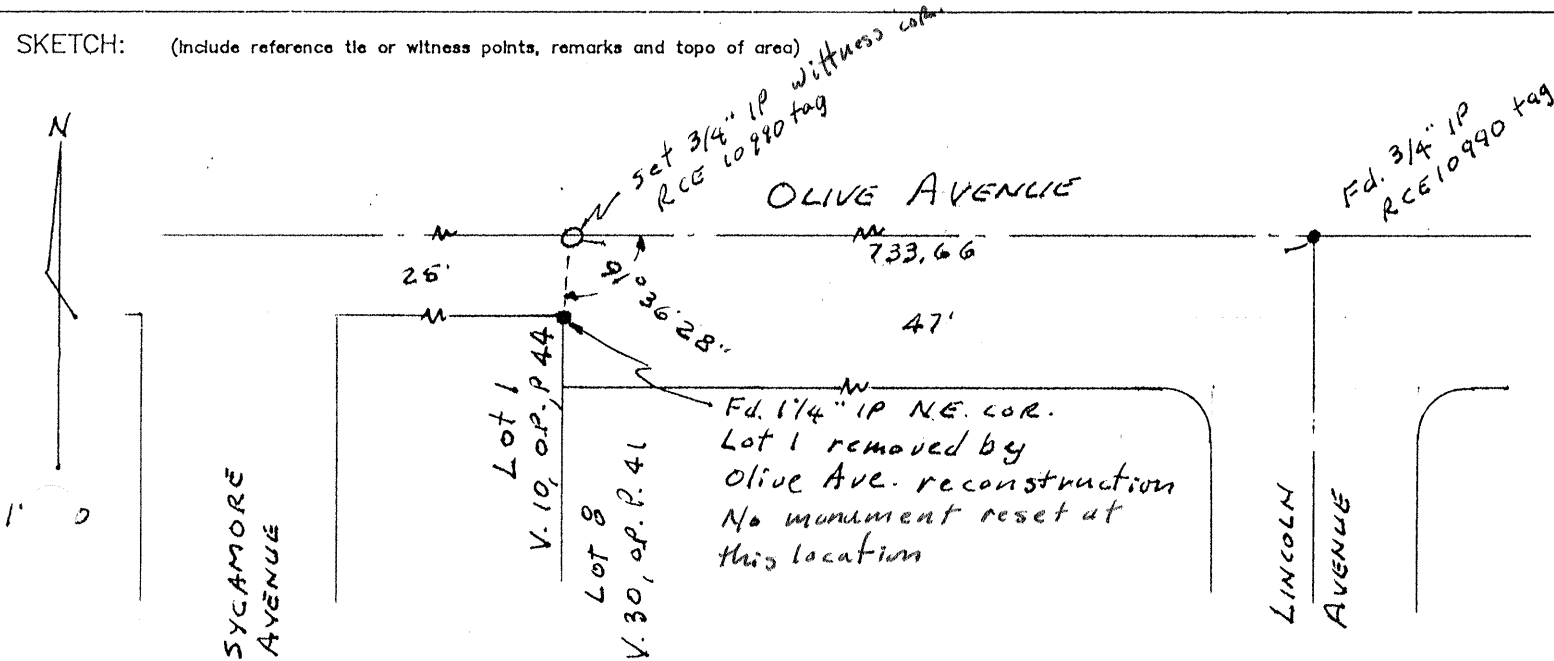
PHYSICAL DESCRIPTION OF MONUMENTS REBUILT OR PERPETUATED.

set 3/4" IP w/ RCE 10990 tag as witness corner as shown below.

CALIFORNIA COORDINATE SYSTEM ORDER: FIRST SECOND THIRD
STATIONS USED: NGS (USC & GS) STATE COUNTY OTHER STATION _____ STATION _____
ZONE _____ ELEVATION _____ NORTHINGS (Y) _____ EASTINGS (X) _____

(Fold)

SKETCH: (Include reference tie or witness points, remarks and topo of area)

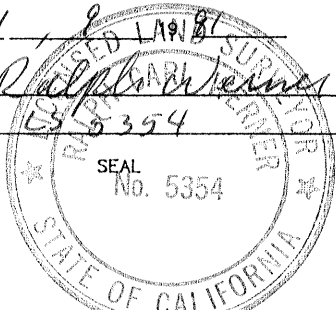


SURVEYOR'S CERTIFICATE

THIS CORNER RECORD WAS PREPARED BY ME OR UNDER MY DIRECTION IN CONFORMANCE WITH THE LAND SURVEYORS ACT ON 1, 8

SIGNED Ralph M. James

L.S. or R.C.E. No. 655354



COUNTY SURVEYOR'S CERTIFICATE

THE CORNER RECORD WAS RECEIVED AND EXAMINED AND FILED 1-28 19 91

BY: Roy James
TITLE: Dep Co Surveyor

DOCUMENT No. 410-R.P. Exp. Sept. 30, 1992

STATEMENT ON BACK OF SHEET YES NO

