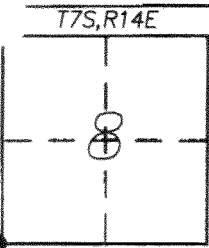


CORNER RECORD

Document Number 410City of MERCEDCounty of MERCED, CaliforniaBrief Legal Description SOUTH WEST CORNER OF SECTION 8, T.7 S., R.14 E. MDB&M.

CORNER TYPE

Government Corner Control
 Meander Property
 Rancho Other
 Date of Survey 09-20-2012

COORDINATES (Optional)

N. _____
 E. _____
 Zone _____ NAD27 NAD83
 NAD83 Epoch _____
 Elev. _____
 Vert. Datum: NGVD29 NAVD88
 Meas. Units: Metric Imperial

Corner - Left as found Found and tagged Established Reestablished Rebuilt

Identification and type of corner found: Evidence used to identify or procedure used to establish or reestablish the corner:

3" BRASS DISC IN MONUMENT BOX AS SHOWN ON 84 PM 28, M.C.R.

MONUMENT WAS DESTROYED WITH CONSTRUCTION PROJECT.

A description of the physical condition of the monument as found and as set or reset:

SET 2" IRON PIPE 30" LONG WITH 3" BRASS DISC IN MONUMENT BOX

PER CORNER RECORD 410 FILED ON JAN 17, 2012.

DETAIL OF 3" BRASS DISC SHOWN ON PAGE 2

SURVEYOR'S STATEMENT

This Corner Record was prepared by me or under my direction in conformance with the Land Surveyor's Act on SEPTEMBER 20, 2012

Signed David D. Heinrichs P.L.S. or R.C.E. No. 7621



COUNTY SURVEYOR'S STATEMENT

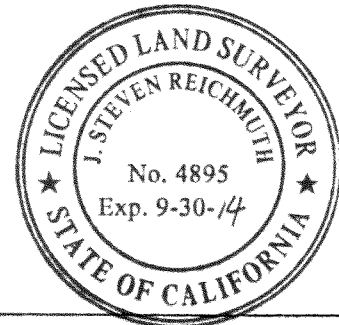
This Corner Record was received September 26, 2012

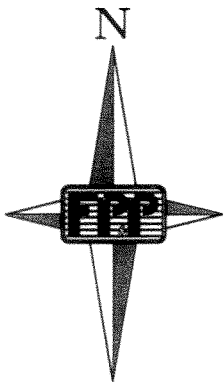
and examined and filed October 1, 2012

Signed J. Steven Reichmuth P.L.S. or R.C.E. No. 4895

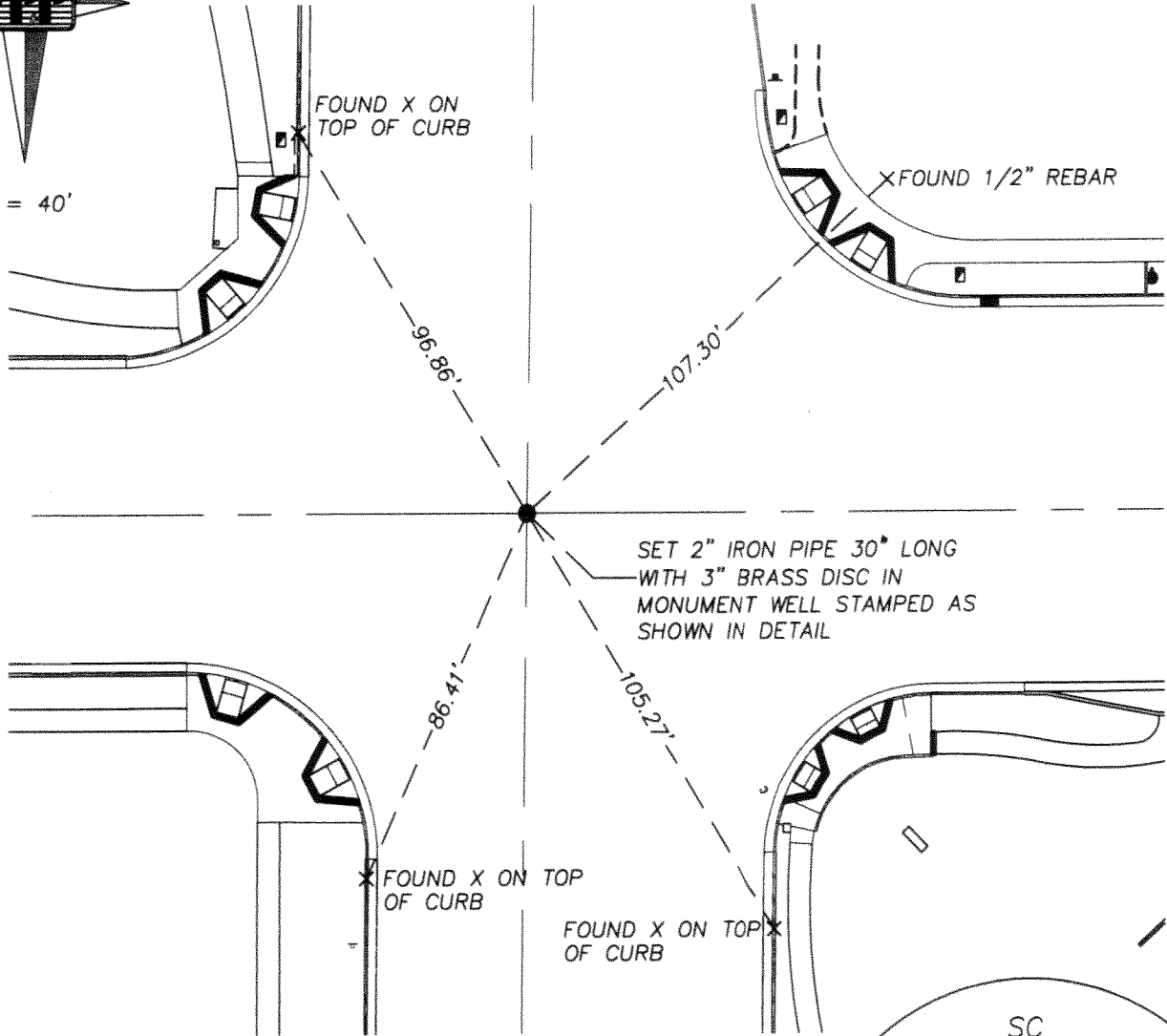
Title Acting County Surveyor

County Surveyor's Comment _____

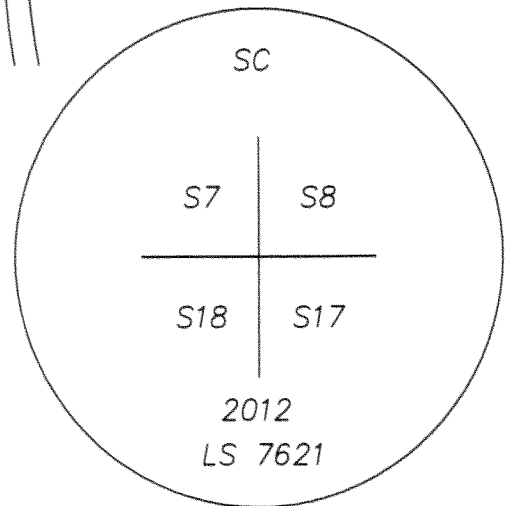




1" = 40'



SET 2" IRON PIPE 30" LONG
WITH 3" BRASS DISC IN
MONUMENT WELL STAMPED AS
SHOWN IN DETAIL



DETAIL