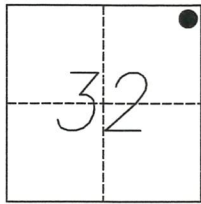


# CORNER RECORD

Agency Index 408-BB  
Document Number \_\_\_\_\_

City of MERCED County of MERCED, California  
Brief Legal Description NORTHERLY NORTHEAST CORNER OF PARCEL "A" PER 115-P.M.-34, M.C.R.

### CORNER TYPE



T.7S., R.14E.

Government Corner  Control   
Meander  Property   
Rancho  Other

Date of Survey JUNE 2, 2017

### COORDINATES (Optional)

N. \_\_\_\_\_ E. \_\_\_\_\_  
Elevation \_\_\_\_\_  
Units Metric  U.S. Survey Foot   
Horizontal Datum \_\_\_\_\_  
Zone \_\_\_\_\_ Epoch Date \_\_\_\_\_  
Vertical Datum \_\_\_\_\_  
 Complies with Public Resources Code §§8801-8819  
 Complies with Public Resources Code §§8890-8902

PLS Act Ref.:  8765(d)  8771  8773  Other:  
Corner/Monument:  Left as found  Established  Rebuilt  Pre-Construction  
 Found and tagged  Reestablished  Referenced  Post-Construction

Narrative of corner identified and monument as found, set, reset, replaced, or removed:  
 See sheet #2 for description(s):

### SURVEYOR'S STATEMENT

This Corner Record was prepared by me or under my direction in conformance with  
the Professional Land Surveyors' Act on March 2, 2018  
Signed [Signature] P.L.S. or R.C.E. No. 7825



### COUNTY SURVEYOR'S STATEMENT

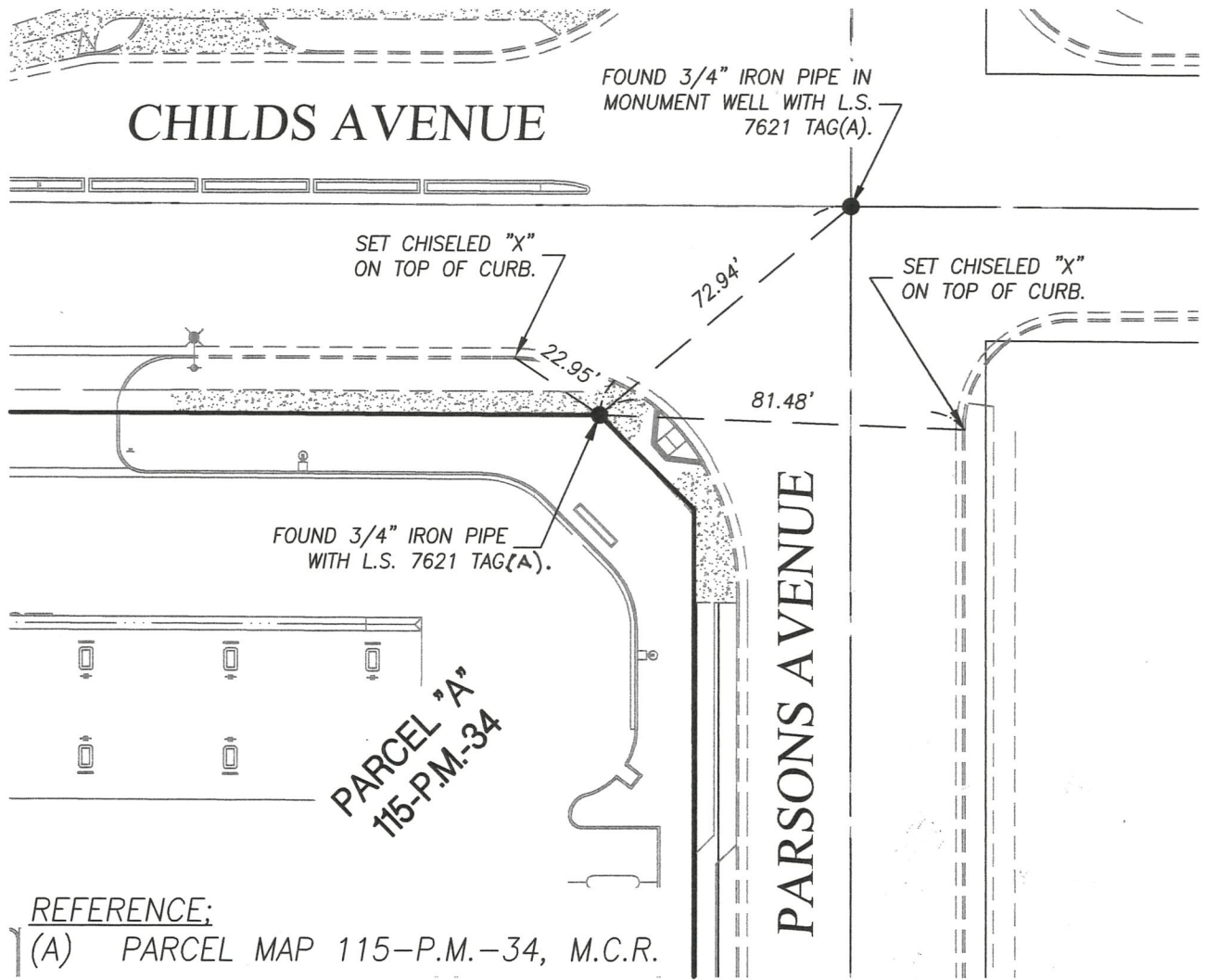
This Corner Record was received MARCH 16, 2018  
and examined and filed MARCH 21, 2018  
Signed Zach T. Janz P.L.S. or R.C.E. No. 8664  
Title COUNTY SURVEYOR



County Surveyor's Comment



SCALE: 1" = 40'



REFERENCE:

(A) PARCEL MAP 115-P.M.-34, M.C.R.