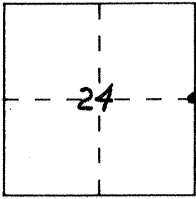


CORNER RECORD

Document Number 400

City of \_\_\_\_\_ County of \_\_\_\_\_, California

Brief Legal Description EAST 1/4 COR SEC. 24 7/4



CORNER TYPE

Government Corner  Control   
Meander  Property   
Rancho  Other   
Date of Survey 7-29-92

COORDINATES (Optional)

N. \_\_\_\_\_  
E. \_\_\_\_\_  
Zone \_\_\_\_\_ Datum \_\_\_\_\_  
Elev. \_\_\_\_\_

Corner — Left as found  Found and tagged  Established  Reestablished  Rebuilt

Identification and type of corner found: Evidence used to identify or procedure used to establish or reestablish the corner:  
Ed. 2' SWING TIES. USED TIES TO SET NAIL IN MON. BOX.

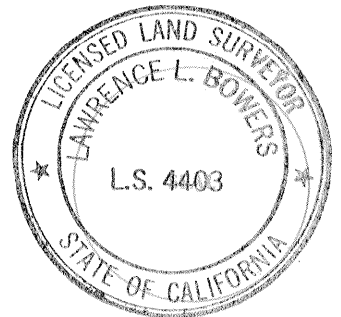
BK 659-3

A description of the physical condition of the monument as found and as set or reset:  
Set 3/4" Iron Pipe, L.S. 4403 in monument box.  
8-31-93

SURVEYOR'S STATEMENT

This Corner Record was prepared by me or under my direction in conformance with the Land Surveyors' Act on Sept 3 1993.

Signed [Signature] L.S. or R.C.E. Number \_\_\_\_\_



COUNTY SURVEYOR'S STATEMENT

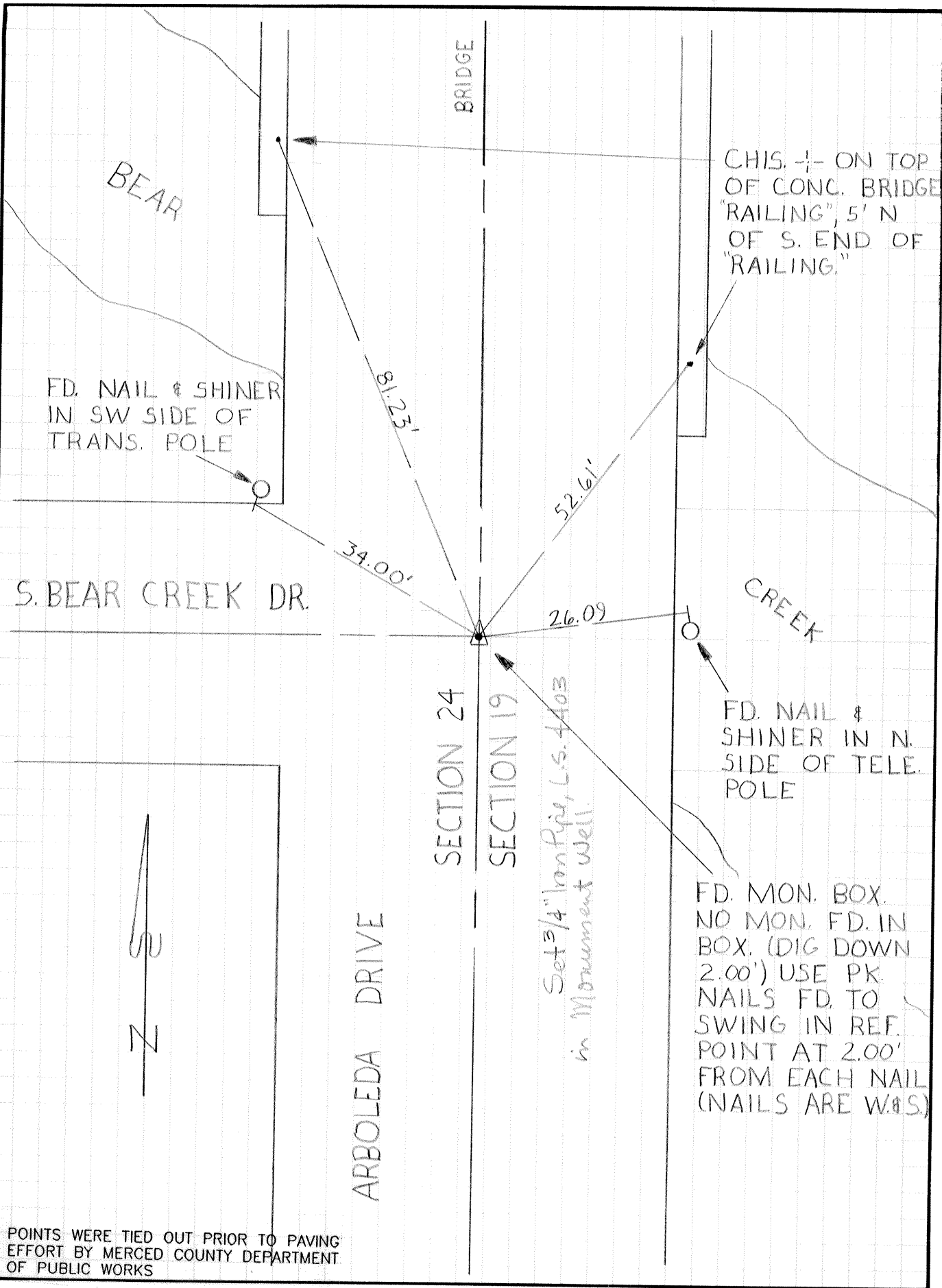
This Corner Record was received 9-3- 1993 and examined and filed 9-7- 1993.

Signed [Signature] Title Dep. Co. Surveyor



County Surveyor's Comment \_\_\_\_\_

92404.05



POINTS WERE TIED OUT PRIOR TO PAVING EFFORT BY MERCED COUNTY DEPARTMENT OF PUBLIC WORKS