

# CORNER RECORD

COUNTY OF Merced T. 7S R. 14E M.D. M.D. MERIDIAN CALIFORNIA  
 CORNER TYPE: GOVT. CORNER  MEANDER  RANCHO  CONTROL  OTHER   
 CORNER IDENTIFICATION --- DATE OF VISIT Feb. 1 1985



CORNER — LEFT AS FOUND  FOUND AND TAGGED  REESTABLISHED OBLITERATED CORNER  REBUILT

**PHYSICAL DESCRIPTION OF CORNER FOUND, EVIDENCE AND METHOD USED TO IDENTIFY OR REESTABLISH**

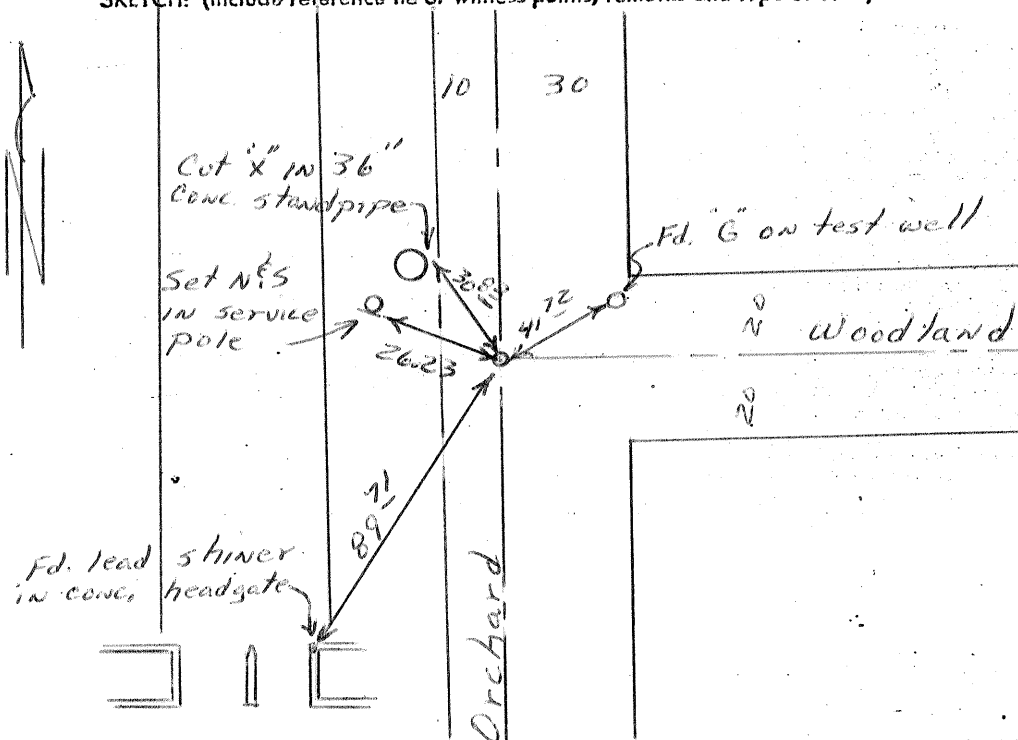
Found 3"x4" hole with redwood bits, 13" down. Had 1/2" iron rod in center and a 3/4"x1 1/2"x4" bolt with 1 1/2" concave top 0.6" south of center.  
 We used ties in field book 701 page 43 to find it, Merced County Road Department records

**PHYSICAL DESCRIPTION OF MONUMENTS REBUILT OR PERPETUATED**

Set 1 3/8" outside diameter iron pipe in center, 0.5" down, Tagged "County Surveyor"

CALIFORNIA COORDINATE SYSTEM ORDER: FIRST  SECOND  THIRD   
 STATIONS USED: NGS (USC & GS)  STATE  COUNTY  OTHER  STATION \_\_\_\_\_ STATION \_\_\_\_\_  
 ZONE \_\_\_\_\_ ELEVATION \_\_\_\_\_ NORTHINGS (Y) \_\_\_\_\_ EASTINGS (X) \_\_\_\_\_

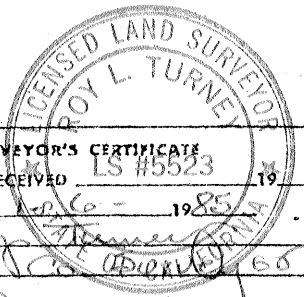
**SKETCH: (Include reference tie or witness points, remarks and topo of area)**



Prepared by  
 Gary Grindler  
 Party Chief  
 Merced, County  
 Road Department  
 Ties in F.B. 701 p. 43  
 Gary Grindler  
 2-4-1985

**SURVEYOR'S CERTIFICATE**  
 THIS CORNER RECORD WAS PREPARED BY ME OR UNDER MY DIRECTION IN CONFORMANCE WITH THE LAND SURVEYORS ACT ON \_\_\_\_\_ 19\_\_\_\_\_  
 SIGNED: \_\_\_\_\_  
 L.S. or R.C.E. No.: \_\_\_\_\_

**COUNTY SURVEYOR'S CERTIFICATE**  
 THE CORNER RECORD WAS RECEIVED \_\_\_\_\_ 19\_\_\_\_\_  
 AND EXAMINED AND FILED \_\_\_\_\_ 19\_\_\_\_\_  
 BY: \_\_\_\_\_  
 TITLE: \_\_\_\_\_  
 DOCUMENT No. 398  
 STATEMENT ON BACK OF SHEET YES  NO



SEAL