

No. 389

(For County Use Only)

CORNER RECORD

COUNTY OF MERCED T. 7 S. R. 14 E. M.D.R. & M. MERIDIAN CALIFORNIA

CORNER TYPE: GOV'T. CORNER [X] MEANDER [] RANCHO [] CONTROL [] OTHER []

CORNER IDENTIFICATION — DATE OF VISIT 10-6-76 1976



CORNER — LEFT AS FOUND [X] FOUND AND TAGGED [] REESTABLISHED OBLITERATED CORNER [] REBUILT []

PHYSICAL DESCRIPTION OF CORNER FOUND; EVIDENCE AND METHOD USED TO IDENTIFY OR REESTABLISH

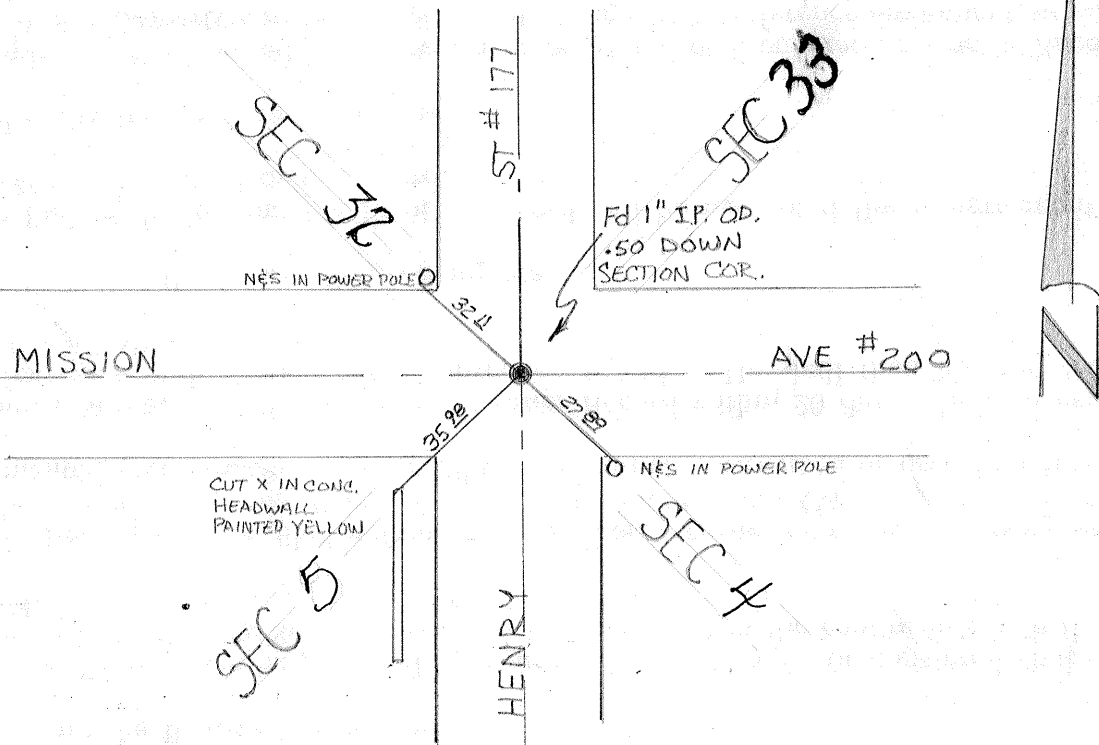
1" OUTSIDE DIAMETER IRON PIPE

PHYSICAL DESCRIPTION OF MONUMENTS REBUILT OR PERPETUATED

CALIFORNIA COORDINATE SYSTEM ORDER: FIRST [] SECOND [] THIRD [] STATIONS USED: NGS (USC & GS) [] STATE [] COUNTY [] OTHER [] STATION _____ STATION _____ ZONE _____ ELEVATION _____ NORTHINGS (Y) _____ EASTINGS (X) _____

(Fold)

SKETCH: (Include reference tie or witness points, remarks and topo of area)



SURVEYOR'S CERTIFICATE

THIS CORNER RECORD WAS PREPARED BY ME OR UNDER MY DIRECTION IN CONFORMANCE WITH THE LAND SURVEYORS ACT ON _____ 19____

SIGNED: _____

L.S. or R.C.E. No.: _____

SEAL

COUNTY SURVEYOR'S CERTIFICATE

THE CORNER RECORD WAS RECEIVED _____ 19____ AND EXAMINED AND FILED _____ 19____

BY: _____

TITLE: _____

DOCUMENT No. 389

STATEMENT ON BACK OF SHEET

YES [] NO []