

**CORNER RECORD**

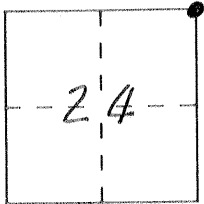
DPD-3011 (NEW 11/93)

Document Number Cor. # 381

City of \_\_\_\_\_

County of Merced, California

Brief Legal Description Corner common to Sections 13 and 24, in east line of T 8 S, R 1 E, M 1 M



**CORNER TYPE**

Government Corner  Control   
Meander  Property   
Rancho  Other   
Date of Survey 3-1-94

**Coordinates (Optional)**

N. \_\_\_\_\_  
E. \_\_\_\_\_  
Zone \_\_\_\_\_ NAD: '27 \_\_\_\_\_ '83 \_\_\_\_\_  
NAD-83 Epoch \_\_\_\_\_  
Elevation \_\_\_\_\_

Corner — Left as found  Found and tagged  Established  Reestablished  Rebuilt

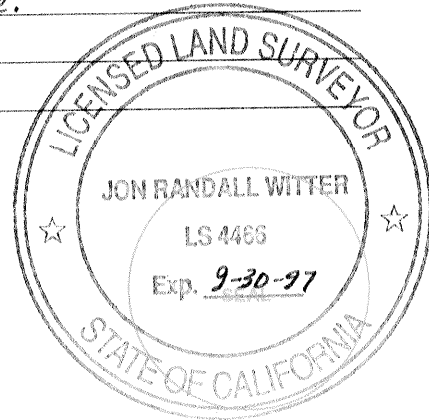
Identification and type of corner found: Evidence used to identify or procedure used to establish or reestablish the corner:  
Found 1/4" I.D. iron pipe down 0.6' in pavement, per Merced County Corner Record No. 381

A description of the physical condition of the monument as found and as set or reset: Monument found in good condition. Set references to aid in location following placement of chip seal on roadway surface.

**SURVEYOR'S STATEMENT**

This Corner Record was prepared by me or under my direction in conformance with the Land Surveyors' Act on 11-30-94 19\_\_\_\_.

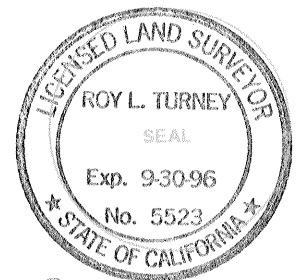
Signed [Signature] L.S. or R.C.E. Number 4466  
For the State of California  
Department of Transportation



**COUNTY SURVEYOR'S STATEMENT**

This Corner Record was received DECEMBER 2 1994 and examined and filed DECEMBER 5 1994.

Signed [Signature] Title DEP. CO. SUR.

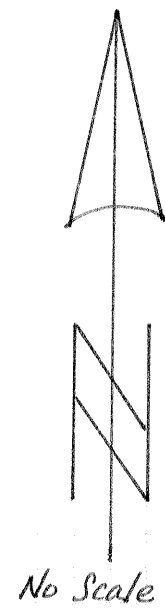


County Surveyor's Comment Agrees with corner record file

State Highway  
Route 59  
Range Line

R. 13 E.  
R. 14 E.

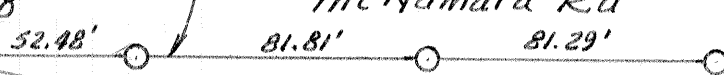
T. 8 S., R. 14 E., MDB & M



13  
24

18  
19

- McNamara Rd -



Not on Section line

Fd 1 1/4" I.D. iron pipe

LEGEND

- Set 60d Spike and Shiner with punch mark as reference point
- Monument found as described