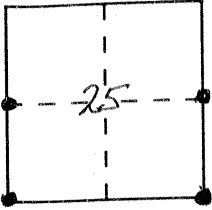


# CORNER RECORD

Document number 377-B-C-D & E  
 County of MERCED, California

City of \_\_\_\_\_  
 Brief Legal Description LOTS 22 through 27, Vol 3 Maps page 35, Merced County Records.



### CORNER TYPE

Government Corner  Control   
 Meander  Property   
 Rancho  Other   
 Date of Survey Oct-Nov. 1995

### COORDINATES (Optional)

N. \_\_\_\_\_  
 E. N/A  
 Zone \_\_\_\_\_ Datum \_\_\_\_\_  
 Elev. \_\_\_\_\_

Corner — Left as found  Found and tagged  Established  Reestablished  Rebuilt

Identification and type of corner found: Evidence used to identify or procedure used to establish or reestablish the corner:  
I made a field retracement of existing monuments/corners located in the south half of Section 25, T.8S., R.8E., M.D.M. The reference maps used on this survey were:

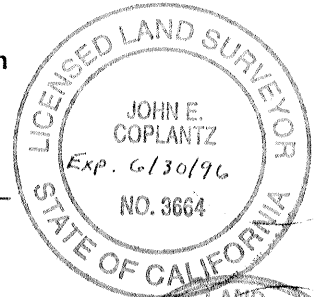
Abbreviation	Ref. no	Vol/Book	Map Type	Page
RS = Record of Survey	(1)	2	RS	5
PM = Parcel Map	(2)	8	PM	11
All maps recorded in Merced County Records.	(3)	14	RS	9
	(4)	16	RS	35
	(5)	19	RS	11
	(6)	50	PM	45
	(7)	51	PM	36
	(8)	3	Map	35

A description of the physical condition of the monument as found and as set or reset:  
The lots I set corners on were laid out on lots Vol. 3 Maps page 35. I set a 3/4" iron pipe, 30" long, tagged LS 3664, as follows: Lot 22, N.W. Corner; Lot 24, witness corners to N.E. & S.E. Corners. Lot 27, witness corner to the N.E. Corner. In addition, I found a 9/8" iron rod (Rebar) as a witness corner to the S.E. Corner of Lot 27. see sketch -- page 2 of 2 reverse side.

### SURVEYOR'S STATEMENT

This Corner Record was prepared by me or under my direction in conformance with the Land Surveyors' Act on December 15, 1995.

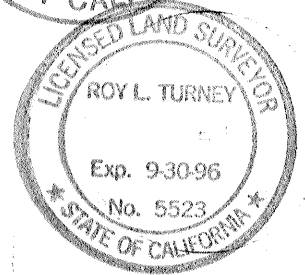
Signed John E. Coplantz L.S. or R.C.E. Number 3664



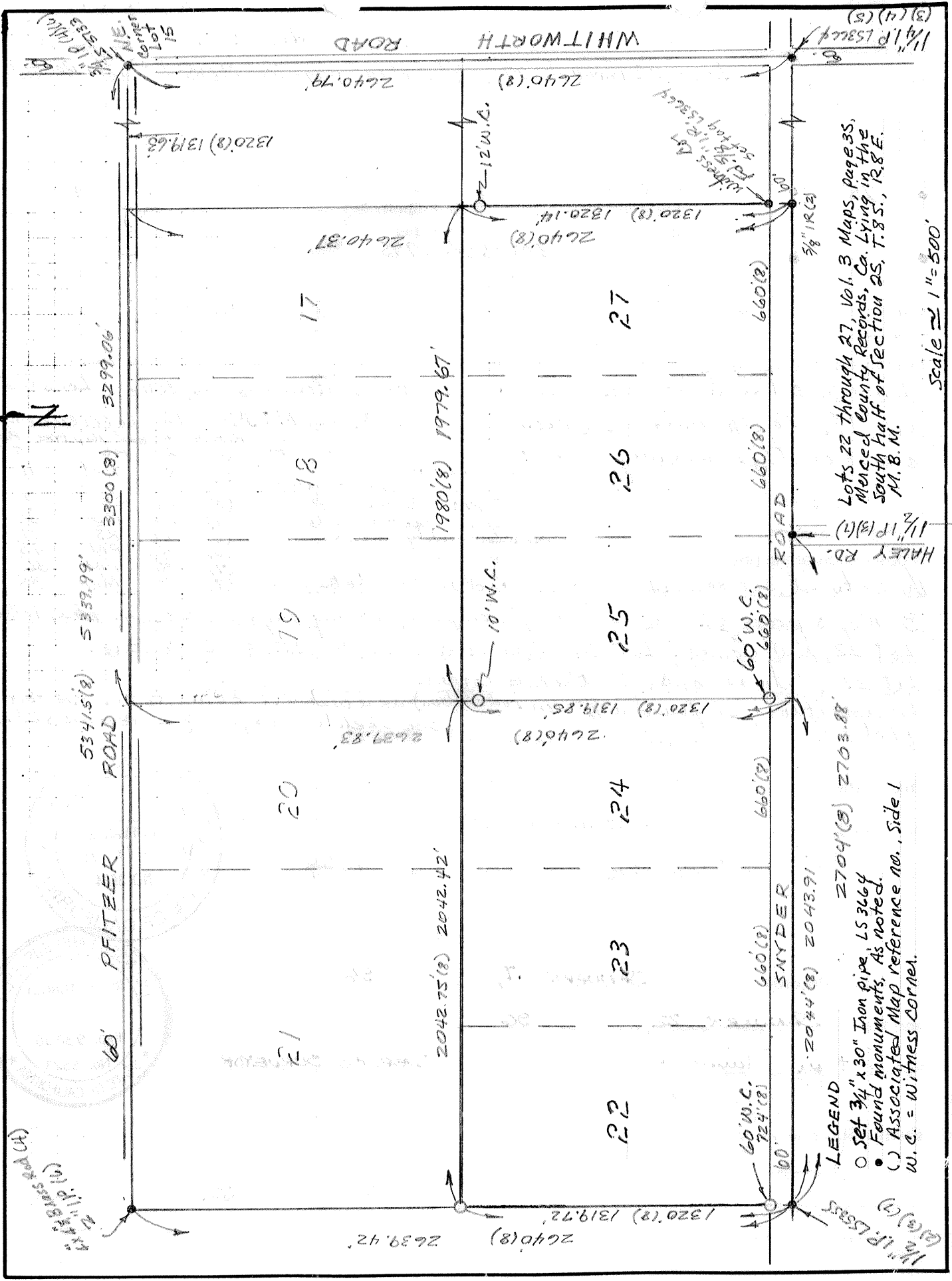
### COUNTY SURVEYOR'S STATEMENT

This Corner Record was received JANUARY 17, 1996 and examined and filed JANUARY 22, 1996.

Signed Roy L. Turney Title DEP. CO SURVEYOR



County Surveyor's Comment \_\_\_\_\_  
 \_\_\_\_\_  
 \_\_\_\_\_



Lots 22 Through 27, Vol. 3 Maps, pages 35,  
 Merced County Records, Co. Lying in the  
 South half of Section 25, T. 8 S., R. 8 E.  
 M. 8. M.

**LEGEND**  
 ○ Set 3/4" x 30" Iron pipe, LS 3664  
 ● Found monuments, As noted.  
 ( ) Associated Map reference no., Side 1  
 W. C. = Witness Corner.

Scale = 1" = 500'