

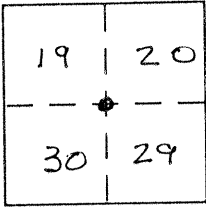
CORNER RECORD

Document Number 365 D

City of _____ County of Merced, California

Brief Legal Description S.W. Corner Section 20, T. 8 S., R. 9 E. Mount Diablo Meridian

Range 8 East



Township 8 South
Range 9 E.

CORNER TYPE

Government Corner Control
 Meander Property
 Rancho Other
 Date of Survey _____

COORDINATES (Optional)

N. _____
 E. _____
 Zone _____ NAD27 NAD83
 NAD83 Epoch _____
 Elev. _____
 Vert. Datum: NGVD29 NAVD88
 Meas. Units: Metric Imperial

Corner - Left as found Found and tagged Established Reestablished Rebuilt

Identification and type of corner found: Evidence used to identify or procedure used to establish or reestablish the corner:

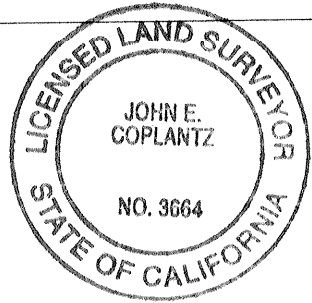
Old Redwood post - see sketch other side

A description of the physical condition of the monument as found and as set or reset:

SURVEYOR'S STATEMENT

This Corner Record was prepared by me or under my direction in conformance with the Land Surveyor's Act on Jan. 2001

Signed J. E. Coplantz P.L.S or R.C.E. No. 3664
Expire 6.30.2006



COUNTY SURVEYOR'S STATEMENT

This Corner Record was received June 17, 2005


and examined and filed June 23, 2005

Signed J. Steve Papp P.L.S or R.C.E. No. 4895

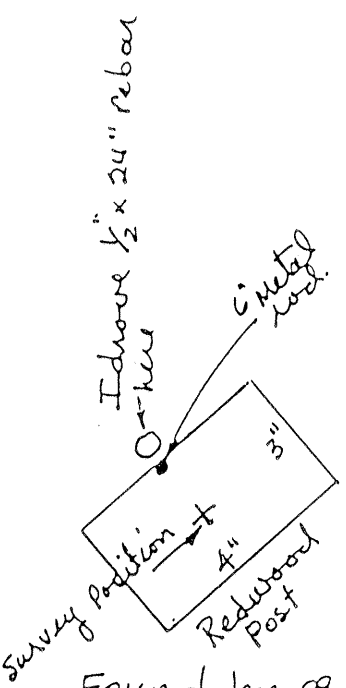
Title Deputy County Surveyor

County Surveyor's Comment _____

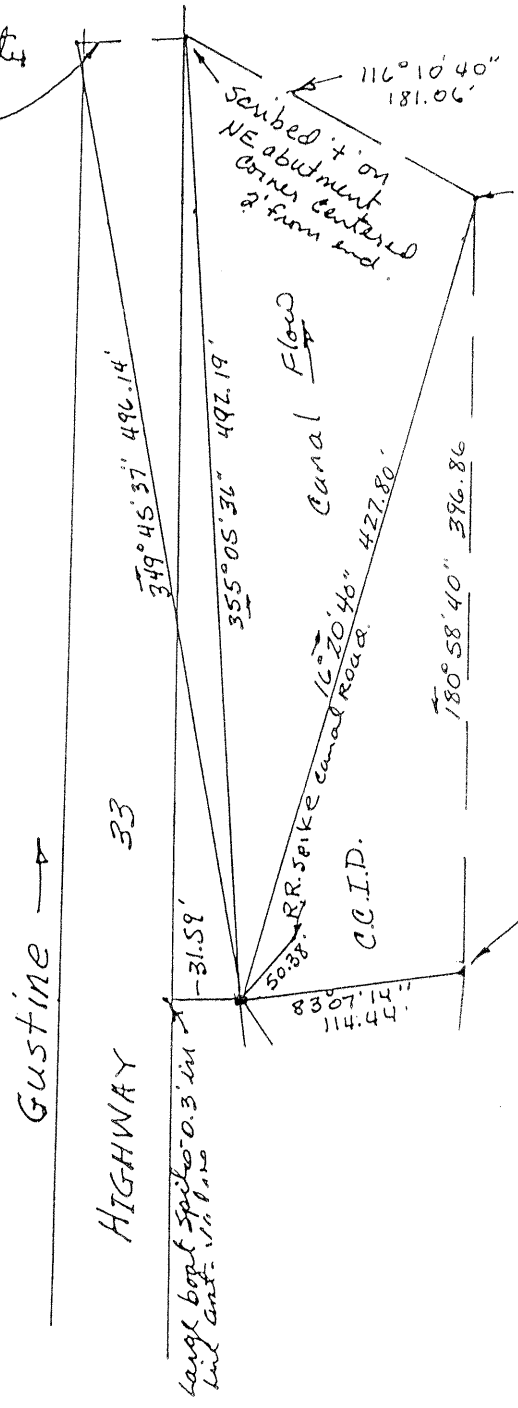
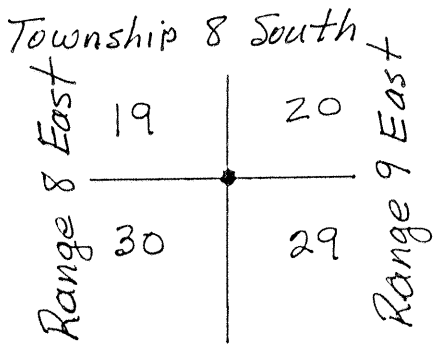


Found 2" chiseled 
 Made dimple in center
 87°19'54"
 46.15'

Wing Wall
 NE Abutment
 Bridge over Gargas
 Creek



Found Jan. 09, 2001
 -0.5' below surface
 Township 8 South



7" Rail post support
 Plate South end
 5" Bridge-check Str.
 center punched
 this bolt.



7" wide x 8' long head wall slide gate
 T.O. 1 1/2" up 9 1/2" about center of
 slide gate stem

large bolt spike 0.3' in
 but ant. 1 1/2' in