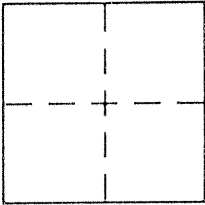


CORNER RECORD

Document Number 358 R

City of _____ County of Mered, California

Brief Legal Description Portion of Lot 14, M&L Subd. Section 17, T8S, R9E, MDM



CORNER TYPE

Government Corner Control
Meander Property
Rancho Other
Date of Survey June 2005

COORDINATES (Optional)

N. _____
E. _____
Zone _____ NAD27 NAD83
NAD83 Epoch _____
Elev. _____
Vert. Datum: NGVD29 NAVD88
Meas. Units: Metric Imperial

Corner - Left as found Found and tagged Established Reestablished Rebuilt

Identification and type of corner found: Evidence used to identify or procedure used to establish or reestablish the corner:

Record maps listed on other side

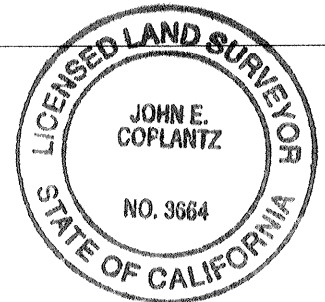
A description of the physical condition of the monument as found and as set or reset:

Recovery of original monuments set about 1908
Set (1) 3/4" x 2 1/4" IP Tagged LS 3664

SURVEYOR'S STATEMENT

This Corner Record was prepared by me or under my direction in conformance with the Land Surveyor's Act on June 13 2005

Signed John E. Coplantz P.L.S or R.C.E. No. 3664
Expire 6.30.2006



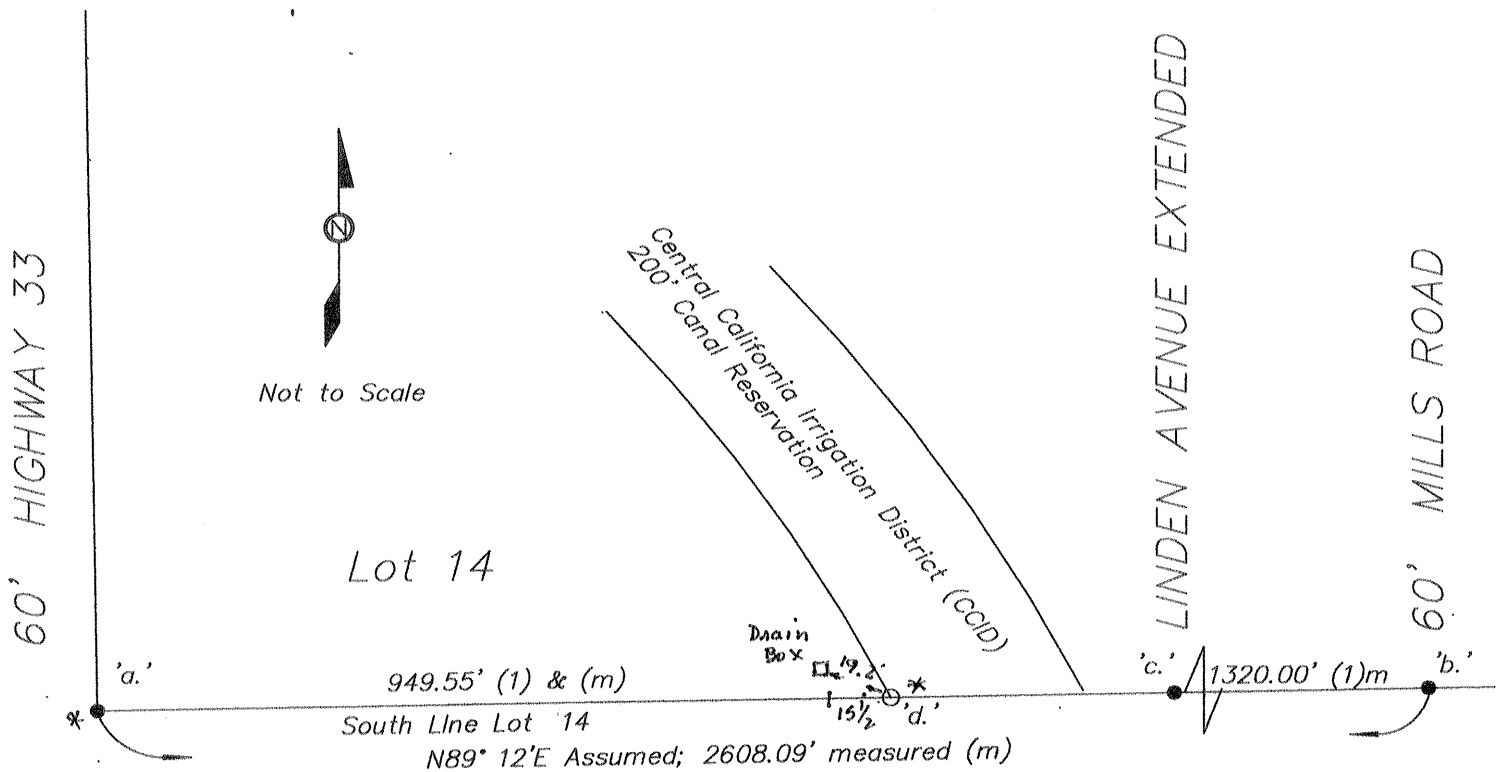
COUNTY SURVEYOR'S STATEMENT

This Corner Record was received June 17, 2005
and examined and filed June 23, 2005

Signed Steve Reed P.L.S or R.C.E. No. 4895
Title Deputy County Surveyor



County Surveyor's Comment _____



List of found and set monuments

References; All in Merced County Records

'a.' Found 5/8" Rebar in Redwood post.
The top is leaning about 4-1/2" easterly (1&3)
The lower portion is measurement reference.

1. Volume 4 of Maps, Page 3
2. Book 6 of Surveys, Page 5
3. Book 39 of Surveys, Page 7

'b.' Found 3/4" Iron Pipe, LS 3664 in Redwood post (3)

'c.' Found large redwood post remains at -20", voids filled with dirt
Set 3/4"x 24" iron pipe, tagged LS 3664 at -20" below ground.

'd.' Searched nothing found, Set 3/4"x24" Iron Pipe, tagged LS 3664

* Set surface nail over underground marks.

South line of Lot 14 as shown upon Map of Miller and Lux
Subdivision Section 17, T.8S., R.9E., Mount Diablo Meridian,
Merced County, California. Vol. 4 of Maps, Page 3