

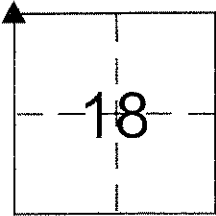
CORNER RECORD

Document Number 355

City of _____

County of Merced, California

Brief Legal Description Northwest Corner Section 18, T. 8 S. R. 9 E., M. D. B. & M.



CORNER TYPE

Government Corner Control
Meander Property
Rancho Other
Date of Survey 09-12-2013

COORDINATES (Optional)

N. _____
E. _____
Zone _____ NAD27 NAD83
NAD83 Epoch _____
Elev. _____
Vert. Datum: NGVD29 NAVD88
Meas. Units: Metric Imperial

Corner - Left as found Found and tagged Established Reestablished Rebuilt

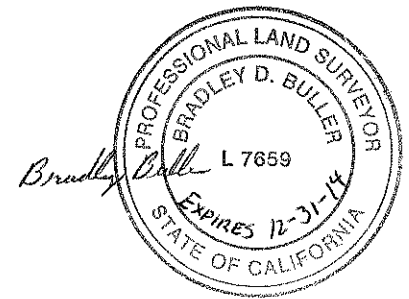
Identification and type of corner found: Evidence used to identify or procedure used to establish or reestablish the corner:
Found 2-3/4" California Division of Highways brass disk with center punch
6" sleeve down 0.85' per RS 32-14 in 1' diameter monument well.

Parcel Map bk. 95 pg. 26, Record of Survey vol. 32 pg. 14.

A description of the physical condition of the monument as found and as set or reset: Monument was found in
good condition.

SURVEYOR'S STATEMENT

This Corner Record was prepared by me or under my direction in conformance with
the Land Surveyor's Act on September 24, 2013
Signed Bradley D. Buller P.L.S or R.C.E. No. L7659



COUNTY SURVEYOR'S STATEMENT

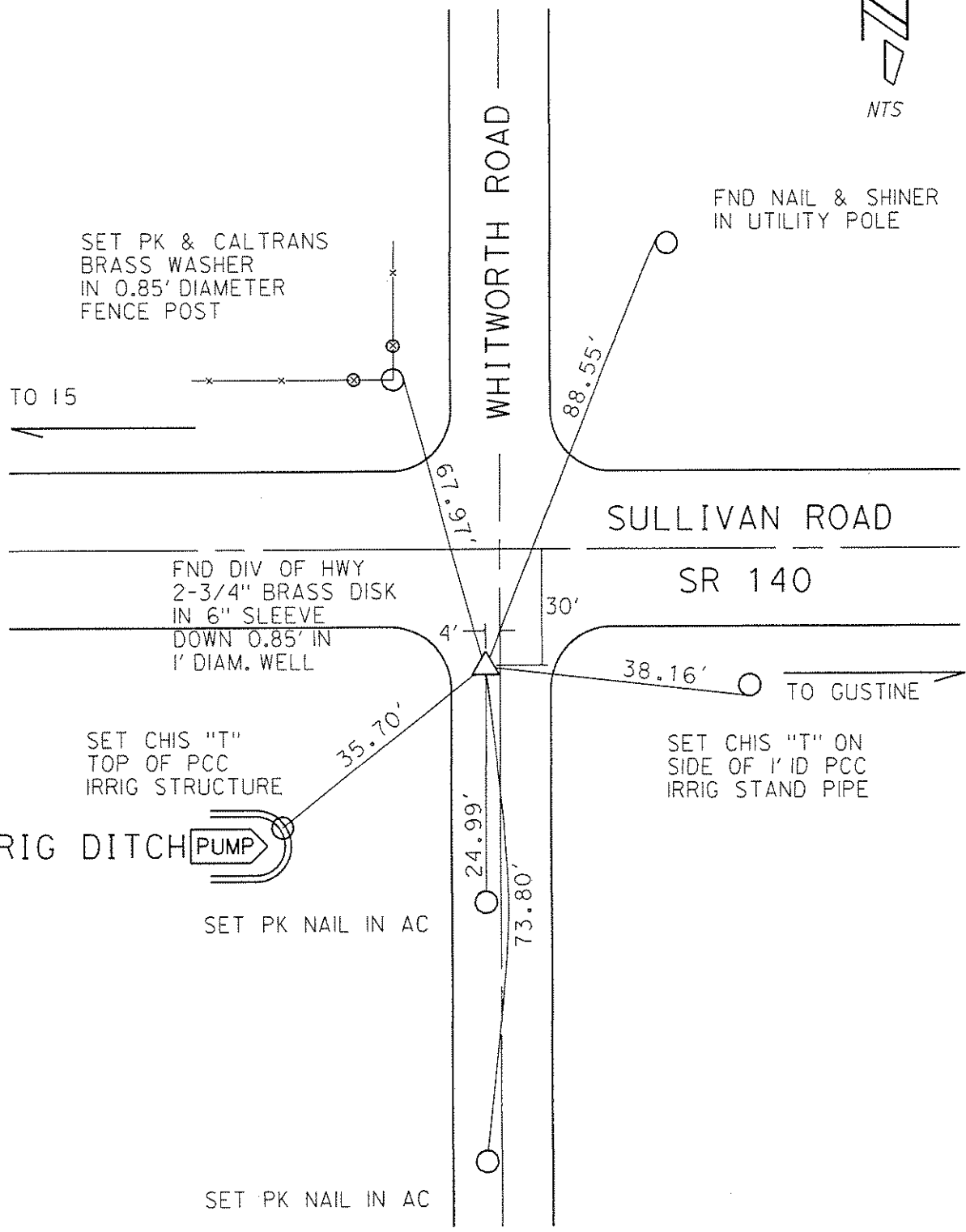
This Corner Record was received October 1, 2013
and examined and filed October 7, 2013
Signed [Signature] P.L.S or ~~R.C.E.~~ No. 4895
Title County Surveyor



County Surveyor's Comment _____



NTS



SET PK & CALTRANS
BRASS WASHER
IN 0.85' DIAMETER
FENCE POST

TO 15

FND NAIL & SHINER
IN UTILITY POLE

WHITWORTH ROAD

SULLIVAN ROAD

SR 140

FND DIV OF HWY
2-3/4" BRASS DISK
IN 6" SLEEVE
DOWN 0.85' IN
1' DIAM. WELL

SET CHIS "T"
TOP OF PCC
IRRIG STRUCTURE

IRRIG DITCH PUMP

SET PK NAIL IN AC

SET CHIS "T" ON
SIDE OF 1' ID PCC
IRRIG STAND PIPE

TO GUSTINE

SET PK NAIL IN AC