

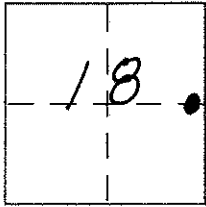
CORNER RECORD

Document Number 355-V

City of _____

County of Merced, California

Brief Legal Description Rail Road Spike



CORNER TYPE

Government Corner Control
Meander Property
Rancho Other
Date of Survey 09-12-2013

COORDINATES (Optional)

N. _____
E. _____
Zone _____ NAD27 NAD83
NAD83 Epoch _____
Elev. _____
Vert. Datum: NGVD29 NAVD88
Meas. Units: Metric Imperial

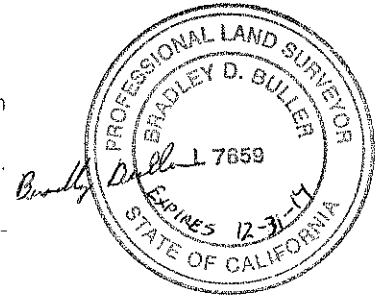
Corner - Left as found Found and tagged Established Reestablished Rebuilt

Identification and type of corner found: Evidence used to identify or procedure used to establish or reestablish the corner:
Found Rail Road spike in AC at intersection of SR 33 and Borba Road
per: PM vol. 104 pg. 17 & RS vol. 51 pg. 36.

A description of the physical condition of the monument as found and as set or reset: Monument was found in
good condition.

SURVEYOR'S STATEMENT

This Corner Record was prepared by me or under my direction in conformance with
the Land Surveyor's Act on September 24, 2013
Signed Bradley Buller P.L.S or R.C.E. No. L 7659

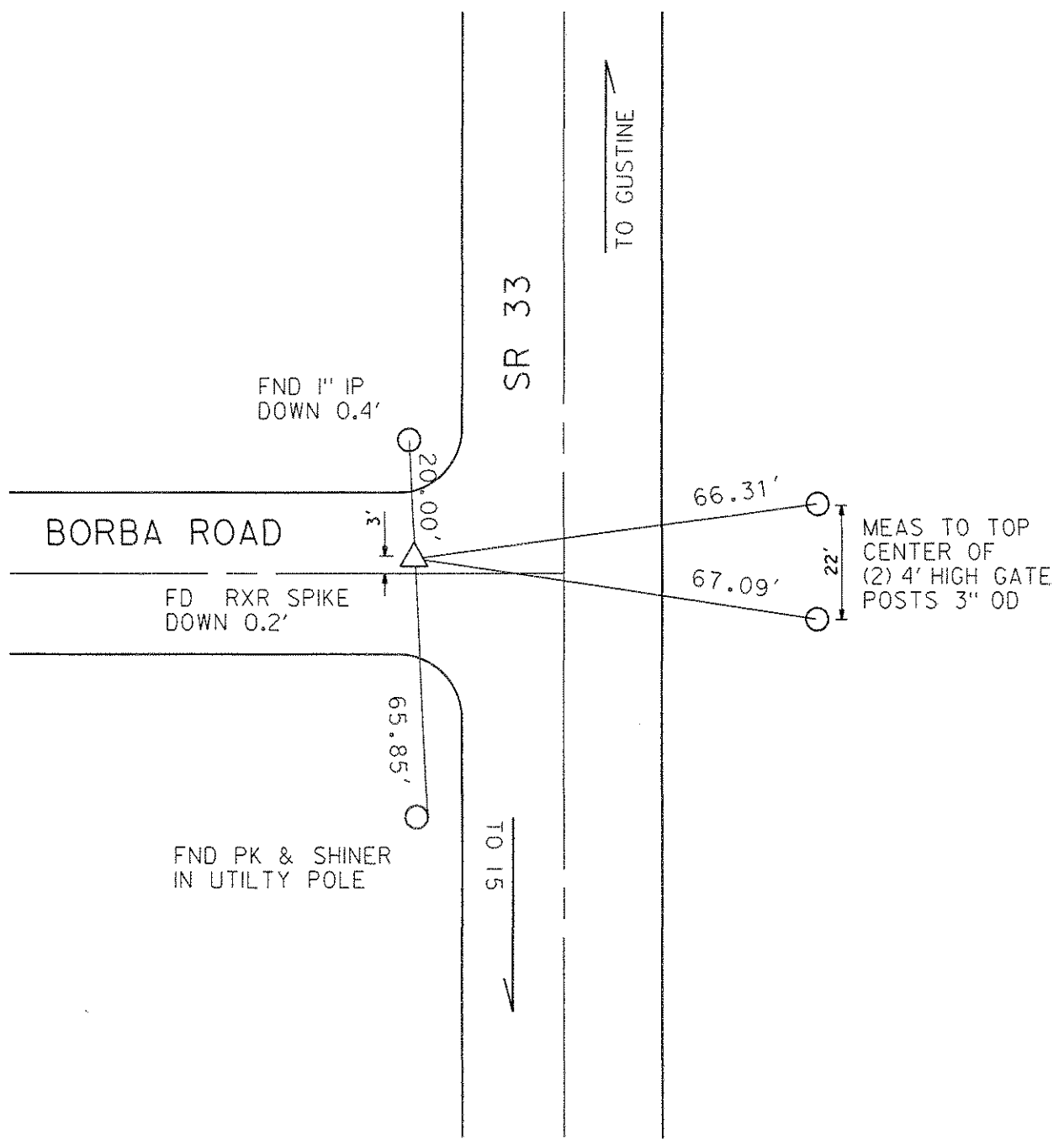


COUNTY SURVEYOR'S STATEMENT

This Corner Record was received October 1, 2013
and examined and filed October 7, 2013
Signed [Signature] P.L.S or R.C.E. No. 4895
Title County Surveyor



County Surveyor's Comment Harrow tooth set in this
position in 1964 by G.R.S. 51 R.S. 36 Found
this monument to be a Harrow tooth.



BORBA ROAD

SR 33

FND 1" IP
DOWN 0.4'

FD RXR SPIKE
DOWN 0.2'

FND PK & SHINER
IN UTILITY POLE

TO GUSTINE

TO 15

MEAS TO TOP
CENTER OF
(2) 4' HIGH GATE
POSTS 3" OD

20.00'

3'

65.85'

66.31'

67.09'

22'