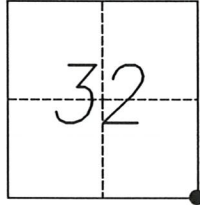


CORNER RECORD

Agency Index

344

Document Number

City of _____ County of MERCED, CaliforniaBrief Legal Description SOUTHEAST COR. SECTION 32, T.8 S., R.13 E MOUNT DIABLO BASE AND MERIDIAN**CORNER TYPE****COORDINATES (Optional)**Government Corner Control Meander Property Rancho Other Date of Survey NOVEMBER 11, 2019

N. _____ E. _____

Elevation _____

Units Metric U.S. Survey Foot

Horizontal Datum _____

Zone _____ Epoch Date _____

Vertical Datum _____

 Complies with Public Resources Code §§8801-8819 Complies with Public Resources Code §§8890-8902

PLS Act Ref.:

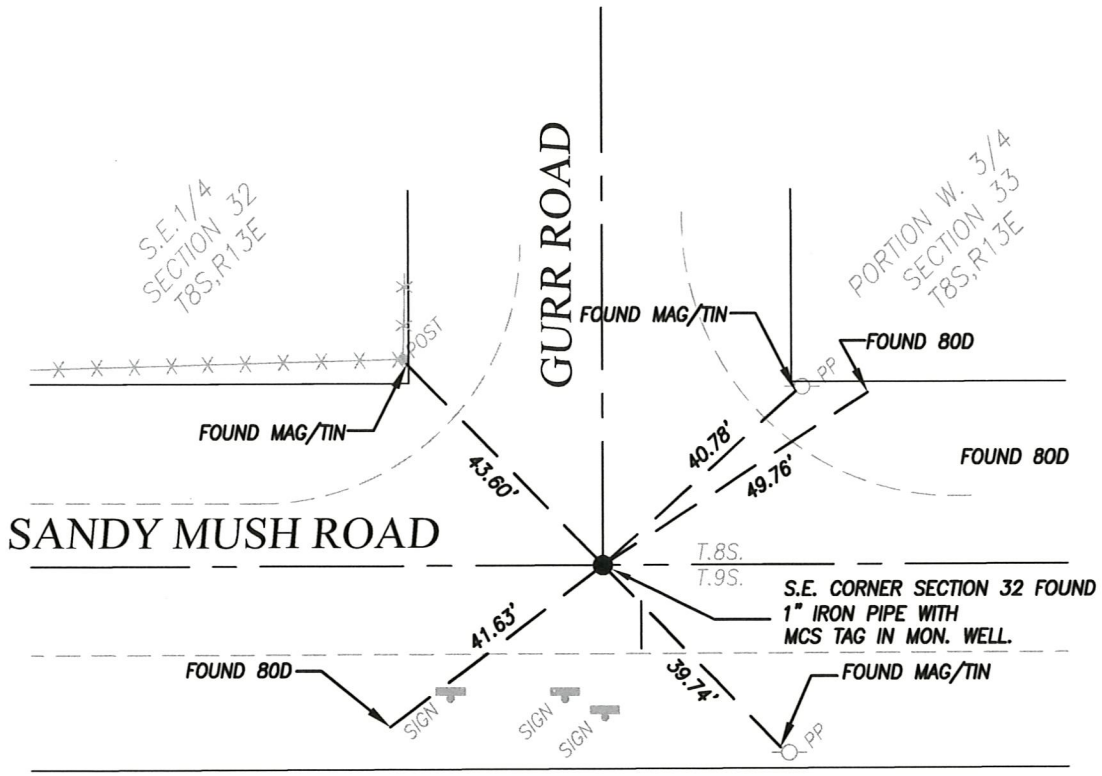
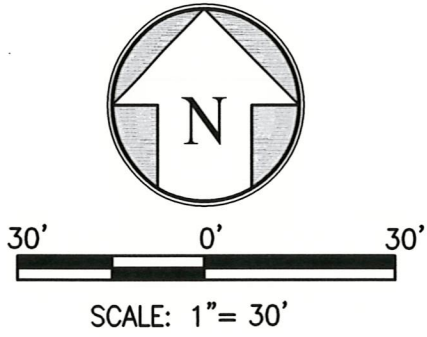
 8765(d) 8771 8773 Other:Corner/
Monument: Left as found Established Rebuilt Pre-Construction Found and tagged Reestablished Referenced Post-Construction

Narrative of corner identified and monument as found, set, reset, replaced, or removed:

 See sheet #2 for description(s):**MONUMENT MAY BE DISTURBED DUE TO CONSTRUCTION****SURVEYOR'S STATEMENT**

This Corner Record was prepared by me or under my direction in conformance with

the Professional Land Surveyors' Act on MARCH 19, 2020Signed [Signature] P.L.S. or R.C.E. No. 9417**COUNTY SURVEYOR'S STATEMENT**This Corner Record was received MARCH 20, 2020and examined and filed MARCH 25, 2020Signed Zach T. Janz P.L.S. or R.C.E. No. 8664Title COUNTY SURVEYOR**County Surveyor's Comment**



REMAINDER
64-PM-40