

#343

CORNER RECORD

COUNTY OF MERCED T. 8S R. 13E M.D. MERIDIAN CALIFORNIA

CORNER TYPE: GOV'T. CORNER  MEANDER  RANCHO  CONTROL  OTHER

CORNER IDENTIFICATION — DATE OF VISIT Dec 7 1978



CORNER FOR SECTIONS 28, 29, 32, 33

CORNER — LEFT AS FOUND  FOUND AND TAGGED  REESTABLISHED OBLITERATED CORNER  REBUILT

PHYSICAL DESCRIPTION OF CORNER FOUND; EVIDENCE AND METHOD USED TO IDENTIFY OR REESTABLISH

FOUND RUSTED 3/8" IRON ROD. USED TIES FOUND IN FIELD BOOK 47 PAGE 51 TO LOCATE

PHYSICAL DESCRIPTION OF MONUMENTS REBUILT OR PERPETUATED

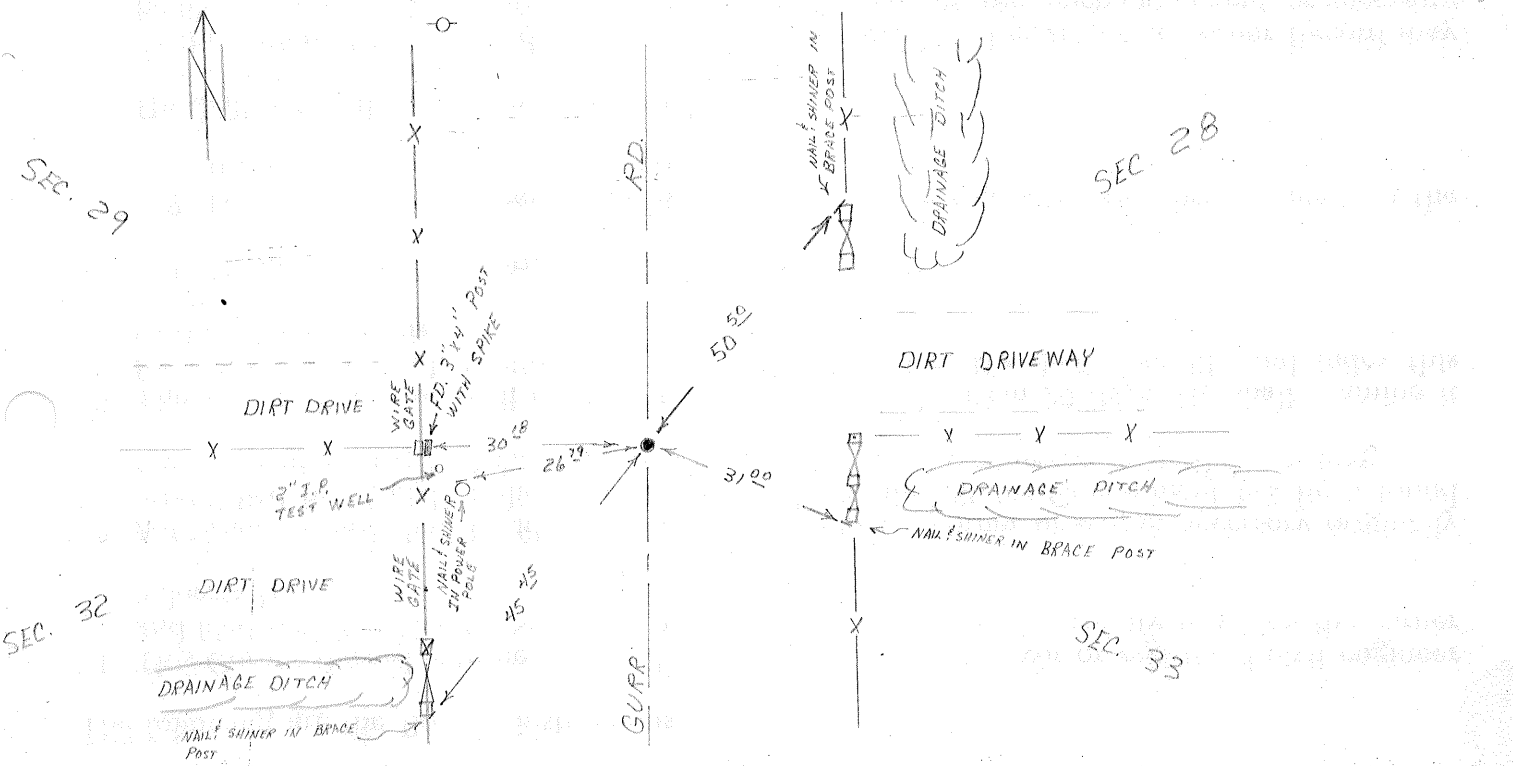
FOUND RUSTED 3/8" IRON ROD ABOUT 2 FEET DOWN FROM SURFACE OF PRESENT PAVEMENT. BROUGHT UP WITH 2 3/8" OUTSIDE DIAMETER IRON PIPE. TAGGED THIS PIPE WITH "MERCED COUNTY SURVEYOR!"

CALIFORNIA COORDINATE SYSTEM ORDER: FIRST  SECOND  THIRD   
STATIONS USED: NGS (USC & GS)  STATE  COUNTY  OTHER  STATION \_\_\_\_\_ STATION \_\_\_\_\_  
ZONE \_\_\_\_\_ ELEVATION \_\_\_\_\_ NORTHINGS (Y) \_\_\_\_\_ EASTINGS (X) \_\_\_\_\_

(Fold)

SKETCH: (Include reference tie or witness points, remarks and topo of area)

THIS CORNER CAN BE FOUND IN MERCED COUNTY ROAD DEPARTMENT'S FIELD BOOK 47 PAGE 51.



SURVEYOR'S CERTIFICATE

THIS CORNER RECORD WAS PREPARED BY ME OR UNDER MY DIRECTION IN CONFORMANCE WITH THE LAND SURVEYORS ACT ON December 19 1978

SIGNED: Ina R. Diller

L.S. or R.C.E. No.: C020263

SEAL

COUNTY SURVEYOR'S CERTIFICATE

THE CORNER RECORD WAS RECEIVED 12-18 1978 AND EXAMINED AND FILED 12-19 1978

BY: [Signature]

TITLE: County Surveyor

DOCUMENT No. 343

STATEMENT ON BACK OF SHEET

YES  NO