

CORNER RECORD

Document Number 338(2)

City of _____ County of Merced, California

Brief Legal Description Northeast Corner of Section 21 7/11 A.P. NO. _____



CORNER TYPE

Government Corner Control
Meander Property
Rancho Other
Date of Survey 5/12/15

COORDINATES (Optional)

N. _____
E. _____
Zone _____ NAD27 NAD83
NAD83 Epoch _____
Elev. _____
Vert. Datum: NGVD29 NAVD88
Meas. Units: Metric Imperial

Corner - Left as found Found and tagged Established Reestablished Rebuilt

Identification and type of corner found: Evidence used to identify or procedure used to establish or reestablish the corner:

SEE SKETCH

A description of the physical condition of the monument as found and as set or reset: ^x

SEE SKETCH

SURVEYOR'S STATEMENT

This Corner Record was prepared by me or under my direction in conformance with

the Land Surveyor's Act on MAY 12TH 20 15

Signed Michael S. Morris P.L.S. or R.C.E. No. 8665



COUNTY SURVEYOR'S STATEMENT

This Corner Record was received MAY 12 20 15

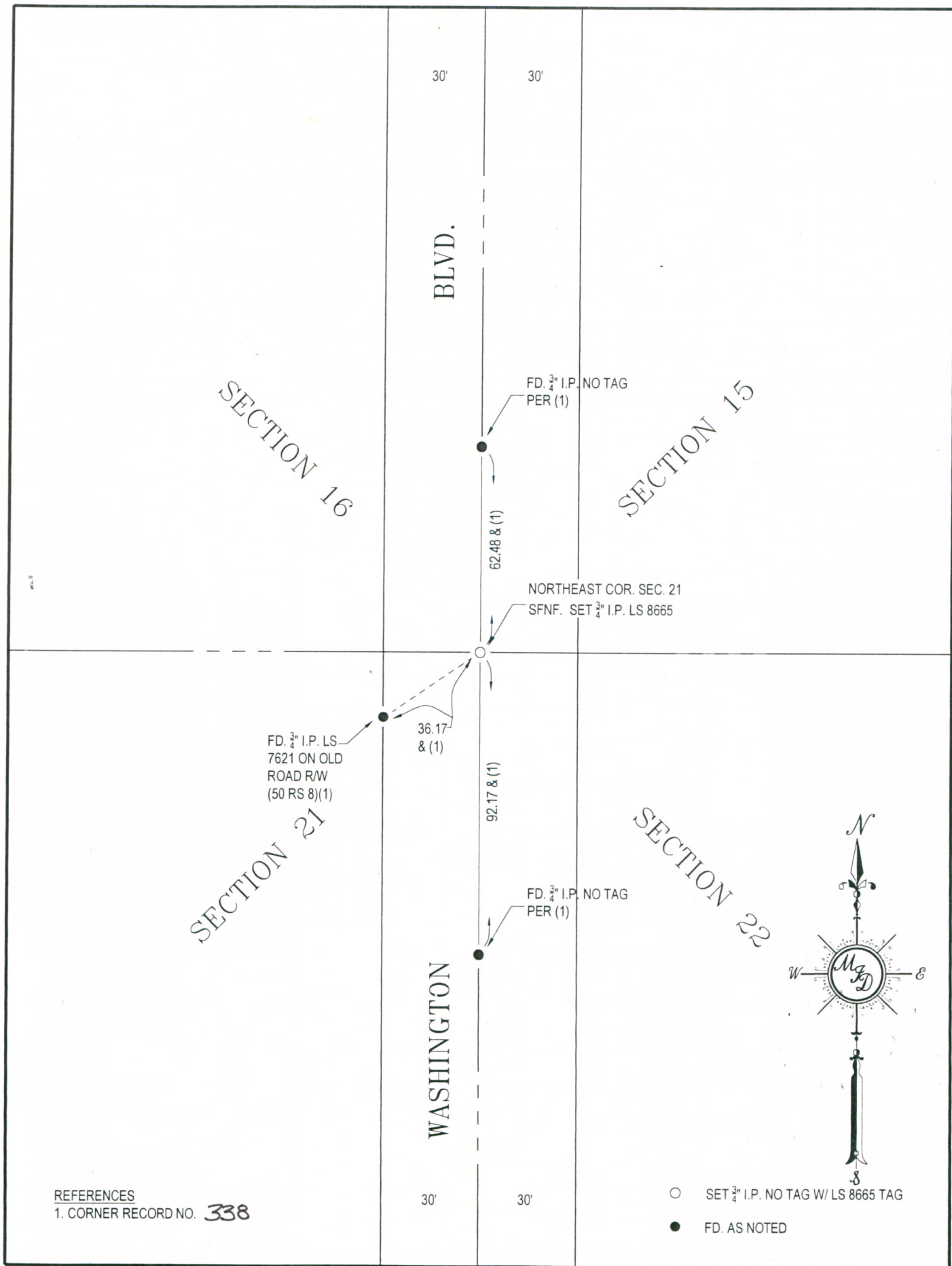
and examined and filed JUNE 26 20 15

Signed J. Steven Reichmuth P.L.S. or R.C.E. No. 4895

Title County Surveyor



County Surveyor's Comment: _____



REFERENCES
 1. CORNER RECORD NO. **338**

- SET 3/4\" I.P. NO TAG W/ LS 8665 TAG
- FD. AS NOTED