

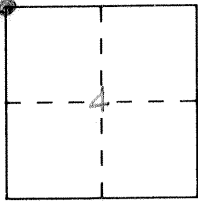
**CORNER RECORD**

Document Number ~~1953~~ 332

City of \_\_\_\_\_

County of MERCED, California

Brief Legal Description N.E. Corner Section 4 T4S, R14E



**CORNER TYPE**

**COORDINATES  
(Optional)**

Government Corner  Control   
Meander  Property   
Rancho  Other   
Date of Survey  \_\_\_\_\_

N. \_\_\_\_\_  
E. \_\_\_\_\_  
Zone \_\_\_\_\_ Datum \_\_\_\_\_  
Elev. \_\_\_\_\_

Corner — Left as found  Found and tagged  Established  Reestablished  Rebuilt

Identification and type of corner found: Evidence used to identify or procedure used to establish or reestablish the corner:

Fd. 3 1/2" x 4 1/2" post

A description of the physical condition of the monument as found and as set or reset: \_\_\_\_\_

No changes 8-30-93  
F.B. 658-45

**SURVEYOR'S STATEMENT**

This Corner Record was prepared by me or under my direction in conformance with the Land Surveyors' Act on Sept. 7 1993.

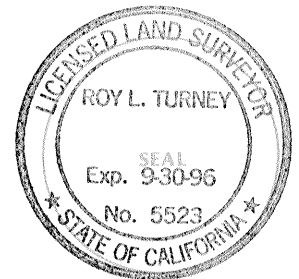
Signed James D. B... L.S. or R.C.E. Number \_\_\_\_\_



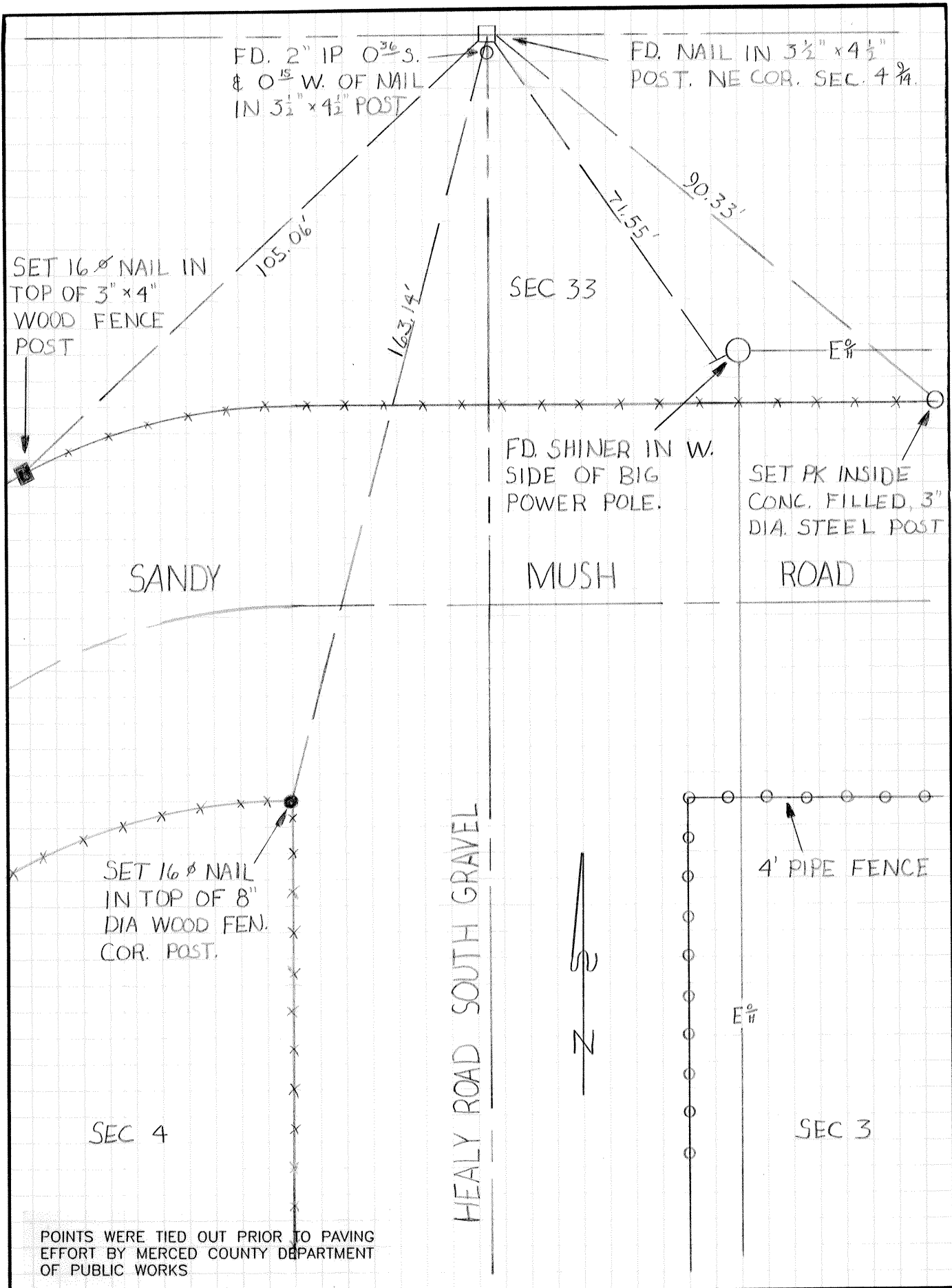
**COUNTY SURVEYOR'S STATEMENT**

This Corner Record was received SEPT. 1993 and examined and filed SEPT. 16, 1993.

Signed Roy L. Turney Title Dep. Co. Sur.



County Surveyor's Comment See 50-PM-5



POINTS WERE TIED OUT PRIOR TO PAVING EFFORT BY MERCED COUNTY DEPARTMENT OF PUBLIC WORKS