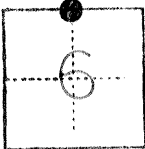


331A

CORNER RECORD

COUNTY OF Merced T. 9S R. 15E Mt. Diablo MERIDIAN CALIFORNIA

CORNER TYPE: GOV'T. CORNER [X] MEANDER [] RANCHO [] CONTROL [] OTHER []
CORNER IDENTIFICATION — DATE OF VISIT September 20, 1976



North 1/4 corner Section 6

CORNER — LEFT AS FOUND [] FOUND AND TAGGED [X] REESTABLISHED OBLITERATED CORNER [] REBUILT []

PHYSICAL DESCRIPTION OF CORNER FOUND; EVIDENCE AND METHOD USED TO IDENTIFY OR REESTABLISH

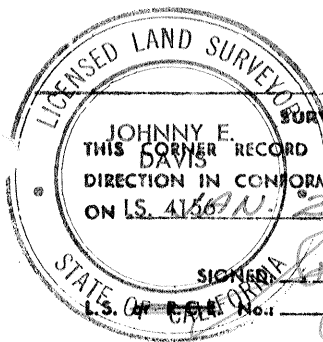
Found 1" O.D. pipe at road surface.

PHYSICAL DESCRIPTION OF MONUMENTS REBUILT OR PERPETUATED

CALIFORNIA COORDINATE SYSTEM ORDER: FIRST [] SECOND [] THIRD []
STATIONS USED: NGS (USC & GS) [] STATE [] COUNTY [] OTHER [] STATION _____ STATION _____
ZONE _____ ELEVATION _____ NORTHINGS (Y) _____ EASTINGS (X) _____

SKETCH: (Include reference tie or witness points, remarks and topo of area)

177.35 Southwest from nail & shiner in power pole
146.45 Northwest from nail & shiner in power pole



SURVEYOR'S CERTIFICATE

THIS CORNER RECORD WAS PREPARED BY ME OR UNDER MY DIRECTION IN CONFORMANCE WITH THE LAND SURVEYORS ACT ON LS. 4156 N. 20 19 80

SIGNED: Johnny E. Davis
No. 4156

SEAL

COUNTY SURVEYOR'S CERTIFICATE

THE CORNER RECORD WAS RECEIVED Feb. 25 19 80 AND EXAMINED AND FILED BY: Walter Mitchell

TITLE: _____

DOCUMENT No. 331A

STATEMENT ON BACK OF SHEET

YES [] NO []