

CORNER RECORD

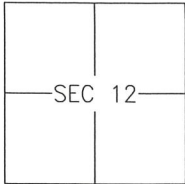
Agency Index 310-Y

Document Number _____

City of MERCED

County of MERCED, California

Brief Legal Description LOTS 22 & 127 OF UNIVERSITY PARK SUBDIVISION 66-OP-1



T7S/R13E

CORNER TYPE

- Government Corner Control
 Meander Property
 Rancho Other

Date of Survey 2018-05-25

COORDINATES (Optional)

N. _____ E. _____

Elevation _____

Units Metric U.S. Survey Foot

Horizontal Datum _____

Zone _____ Epoch Date _____

Vertical Datum: _____

Complies with Public Resources Code §§8801-8819

Complies with Public Resources Code §§8890-8902

PLS Act Ref.: 8765(d) 8771 8773

Other: _____

Corner/Monument: Left as found Established Rebuilt Pre-Construction
 Found and tagged Reestablished Referenced Post-Construction

Narrative of corner identified and monument as found and set or reset:

See sheet #2 for description(s):

SURVEYOR'S STATEMENT

This Corner Record was prepared by me or under my direction in conformance with the Land Surveyor's Act on 1 Nov, 2018.

Signed [Signature] P.L.S. or R.C.E. No.: 8040



COUNTY SURVEYOR'S STATEMENT

This Corner Record was received NOVEMBER 6, 2018 and examined and filed NOVEMBER 13, 2018.

Signed Zachary T. Janz P.L.S. or R.C.E. No.: 8664

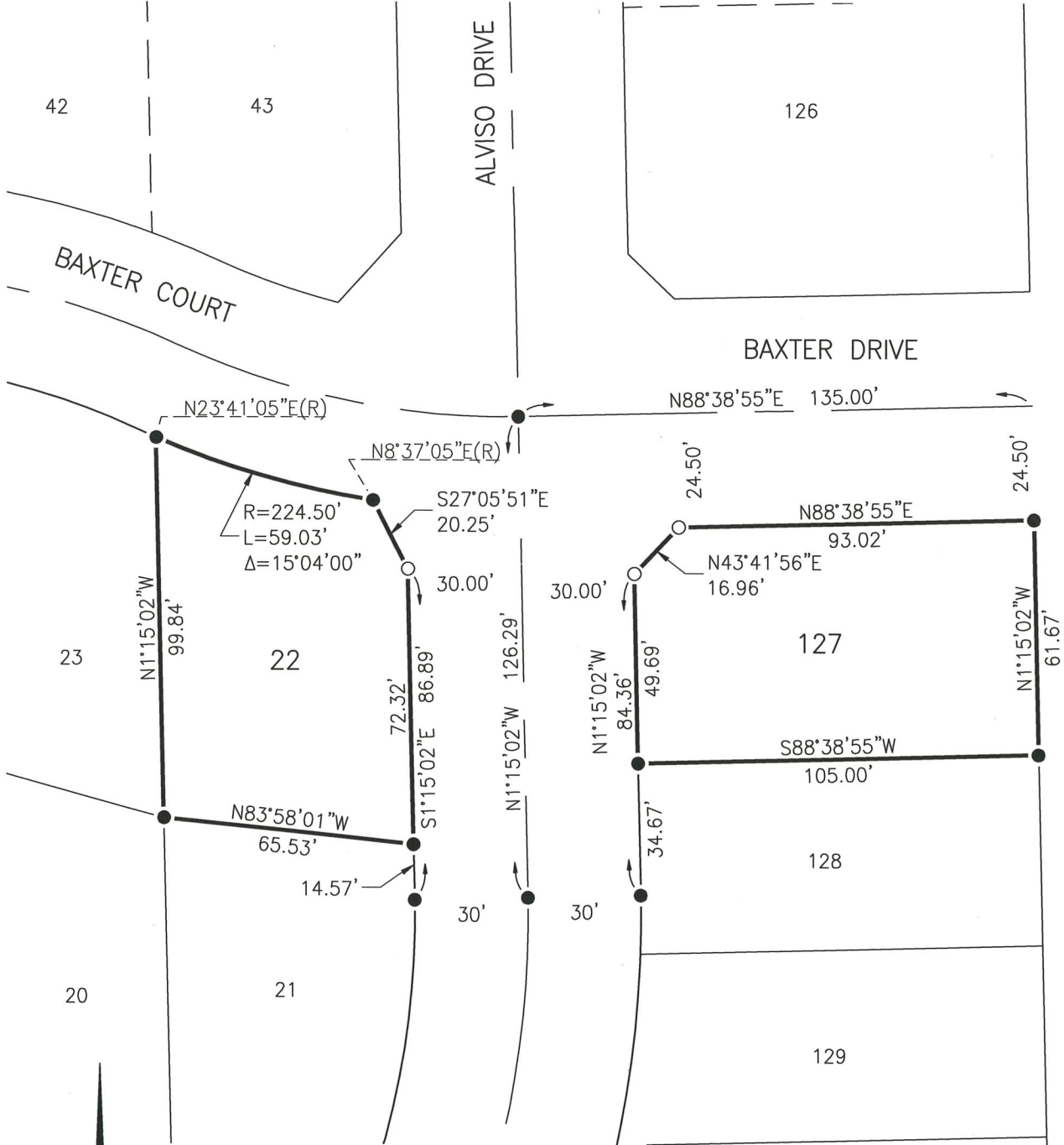
Title COUNTY SURVEYOR

County Surveyor's Comment _____



Document Number

Agency Index



REFERENCE

(A) UNIVERSITY PARK SUBDIVISION OFFICIAL PLATS, VOLUME 66, PAGES 1-4

LEGEND:

- FOUND 3/4" IRON PIPE TAGGED L.S. 6944 PER (A)
- SET 3/4" IRON PIPE, TAGGED LS 8040, OR AS NOTED

SCALE 1" = 40'