

CORNER RECORD

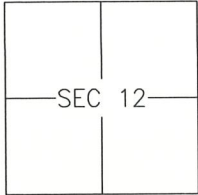
Agency Index 310-V

Document Number _____

City of MERCED

County of MERCED, California

Brief Legal Description LOTS 15-17 OF UNIVERSITY PARK SUBDIVISION, 66-OP-1



CORNER TYPE

- Government Corner Control
 Meander Property
 Rancho Other

Date of Survey 2018-05-25

COORDINATES (Optional)

- N. _____ E. _____
 Elevation _____
 Units Metric U.S. Survey Foot
 Horizontal Datum _____
 Zone _____ Epoch Date _____
 Vertical Datum: _____
 Complies with Public Resources Code §§8801-8819
 Complies with Public Resources Code §§8890-8902

PLS Act Ref.: 8765(d) 8771 8773 Other: _____

Corner/Monument: Left as found Established Rebuilt Pre-Construction
 Found and tagged Reestablished Referenced Post-Construction

Narrative of corner identified and monument as found and set or reset:
 See sheet #2 for description(s):

SURVEYOR'S STATEMENT

This Corner Record was prepared by me or under my direction in conformance with the Land Surveyor's Act on 20 July, 2018.
Signed [Signature] P.L.S. or R.C.E. No.: 8040

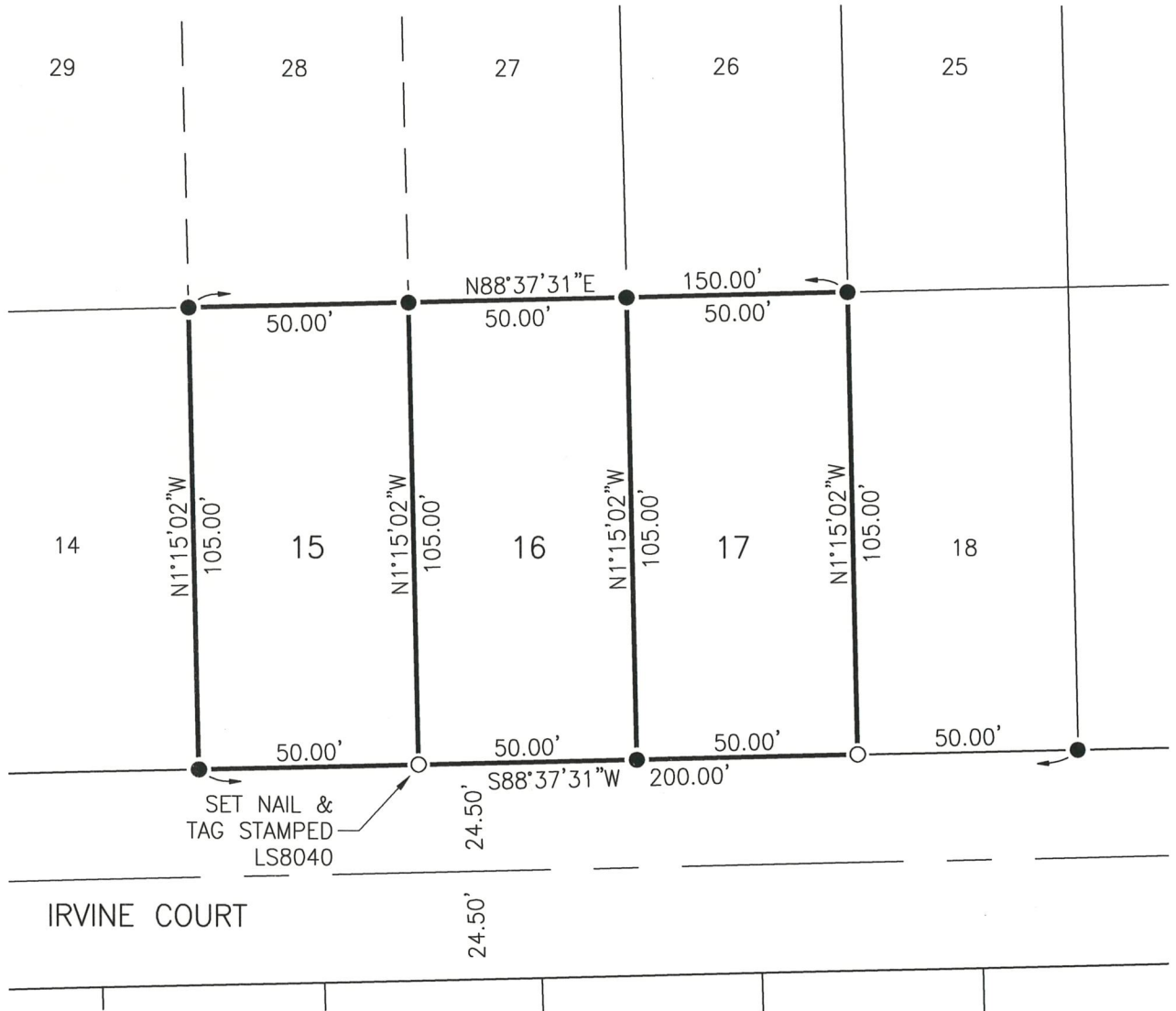


COUNTY SURVEYOR'S STATEMENT

This Corner Record was received July 25, 2018 and examined and filed July 25, 2018.
Signed Zachary T. Janz P.L.S. or R.C.E. No.: 8664
Title COUNTY SURVEYOR



County Surveyor's Comment _____



SCALE

1" = 40'

REFERENCE

(A) UNIVERSITY PARK SUBDIVISION, OFFICIAL PLATS, VOLUME 66, PAGES 1-4

LEGEND:

-
-

FOUND 3/4" IRON PIPE MONUMENT WITH TAG "LS 6944" PER (A)
SET 3/4" IRON PIPE, TAGGED LS 8040, OR AS NOTED.