

# CORNER RECORD

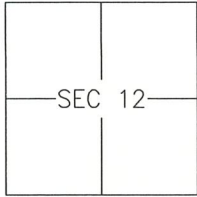
Agency Index 310-U

Document Number \_\_\_\_\_

City of MERCED

County of MERCED, California

Brief Legal Description LOT 113 OF UNIVERSITY PARK SUBDIVISION, 66-OP-1



T7S/R13E

### CORNER TYPE

- Government Corner  Control   
 Meander  Property   
 Rancho  Other

Date of Survey 2018-06-28

### COORDINATES (Optional)

- N. \_\_\_\_\_ E. \_\_\_\_\_  
 Elevation \_\_\_\_\_  
 Units Metric  U.S. Survey Foot   
 Horizontal Datum \_\_\_\_\_  
 Zone \_\_\_\_\_ Epoch Date \_\_\_\_\_  
 Vertical Datum: \_\_\_\_\_  
 Complies with Public Resources Code §§8801-8819  
 Complies with Public Resources Code §§8890-8902

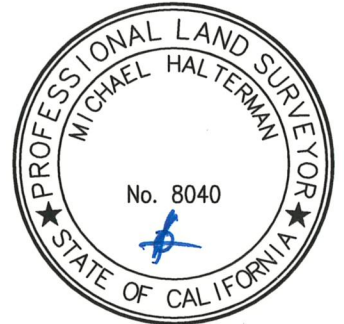
PLS Act Ref.:  8765(d)  8771  8773 Other: \_\_\_\_\_

Corner/Monument:  Left as found  Established  Rebuilt  Pre-Construction  
 Found and tagged  Reestablished  Referenced  Post-Construction

Narrative of corner identified and monument as found and set or reset:  
 See sheet #2 for description(s):

### SURVEYOR'S STATEMENT

This Corner Record was prepared by me or under my direction in conformance with  
 the Land Surveyor's Act on 20 July, 2018.  
 Signed [Signature] P.L.S. or R.C.E. No.: 8040

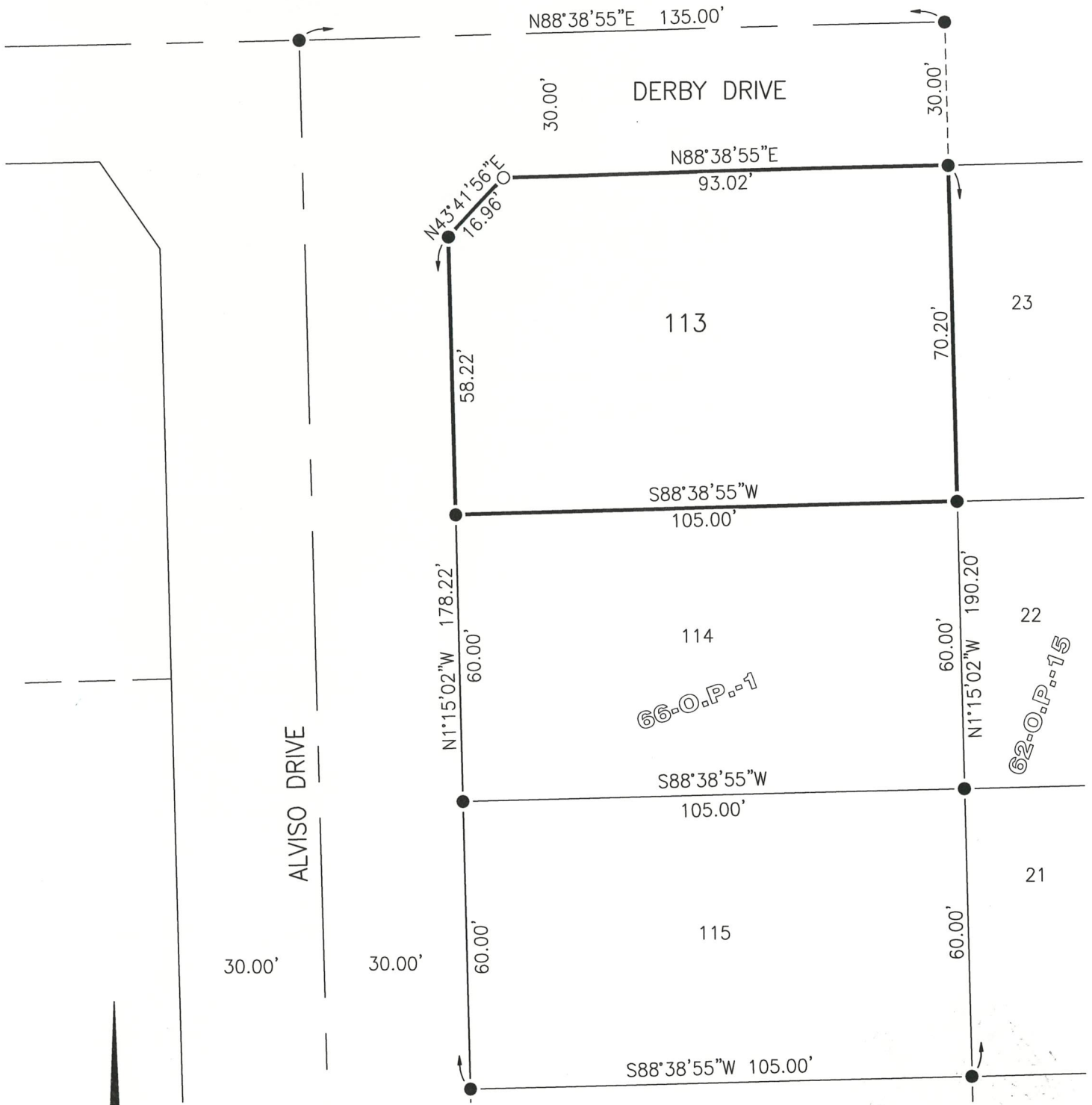


### COUNTY SURVEYOR'S STATEMENT

This Corner Record was received July 25, 2018 and examined  
 and filed July 25, 2018.  
 Signed Zachary T. Janz P.L.S. or R.C.E. No.: 8664  
 Title COUNTY SURVEYOR



County Surveyor's Comment \_\_\_\_\_



REFERENCE

(A) UNIVERSITY PARK SUBDIVISION, OFFICIAL PLATS, VOLUME 66, PAGES 1-4

LEGEND:

- 
- 

FOUND 3/4" IRON PIPE MONUMENT WITH TAG "LS 6944" PER (A)  
SET 3/4" IRON PIPE, TAGGED LS 8040, OR AS NOTED

SCALE

1" = 30'

