

# CORNER RECORD

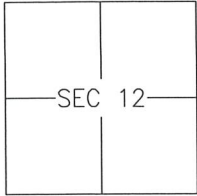
Agency Index 310-S

Document Number \_\_\_\_\_

City of MERCED

County of MERCED, California

Brief Legal Description LOTS 95-96 OF UNIVERSITY PARK II, PHASE 1, BOOK 72 OF OFFICIAL PLATS, PP. 33-36



T7S/R13E

### CORNER TYPE

- Government Corner  Control   
 Meander  Property   
 Rancho  Other

Date of Survey \_\_\_\_\_

### COORDINATES (Optional)

- N. \_\_\_\_\_ E. \_\_\_\_\_  
 Elevation \_\_\_\_\_  
 Units Metric  U.S. Survey Foot   
 Horizontal Datum \_\_\_\_\_  
 Zone \_\_\_\_\_ Epoch Date \_\_\_\_\_  
 Vertical Datum: \_\_\_\_\_  
 Complies with Public Resources Code §§8801-8819  
 Complies with Public Resources Code §§8890-8902

PLS Act Ref.:  8765(d)  8771  8773 Other: \_\_\_\_\_

Corner/Monument:  Left as found  Established  Rebuilt  Pre-Construction  
 Found and tagged  Reestablished  Referenced  Post-Construction

Narrative of corner identified and monument as found and set or reset:  
 See sheet #2 for description(s):

### SURVEYOR'S STATEMENT

This Corner Record was prepared by me or under my direction in conformance with

the Land Surveyor's Act on 13 JULY, 2018

Signed [Signature] P.L.S. or R.C.E. No.: 8040



### COUNTY SURVEYOR'S STATEMENT

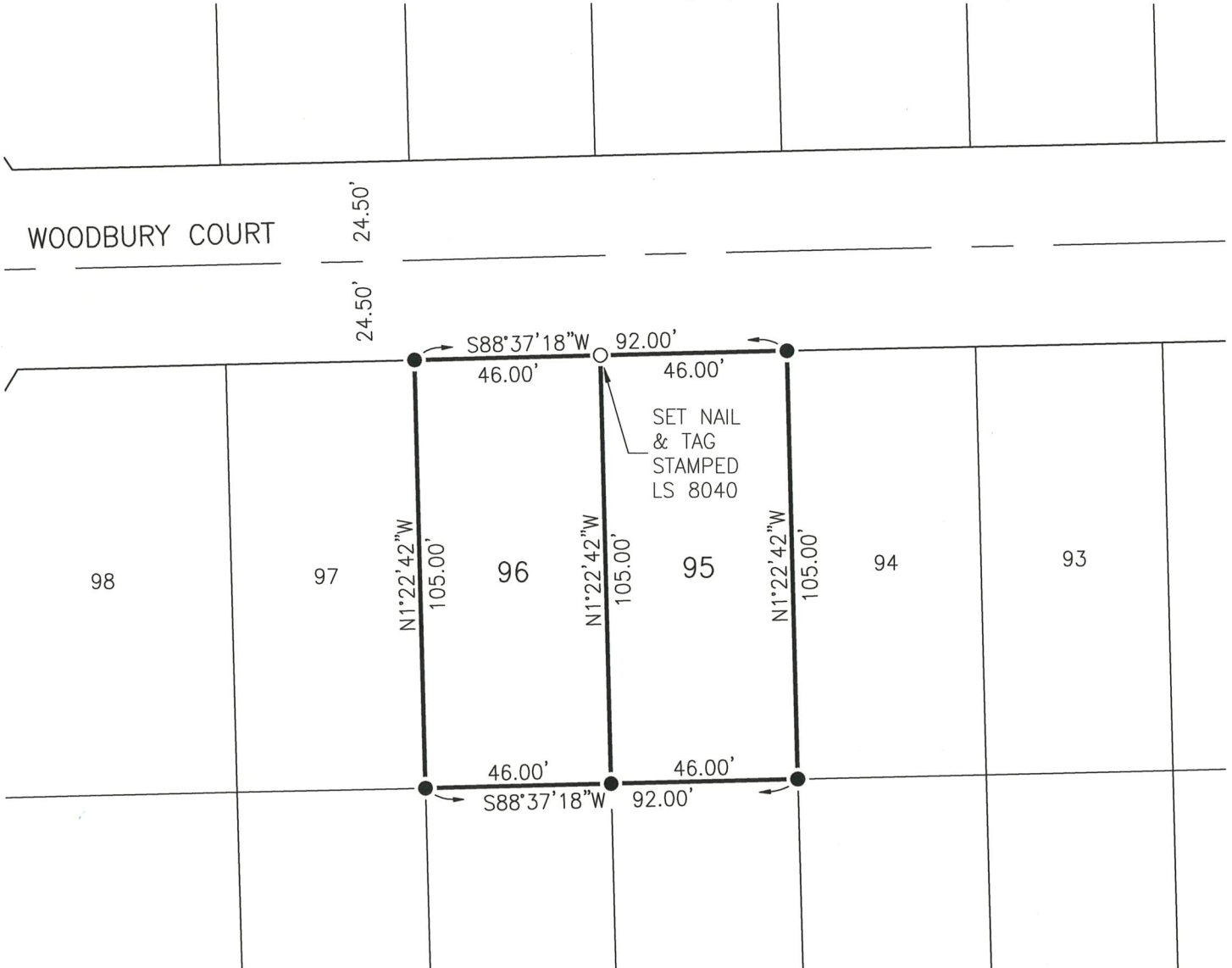
This Corner Record was received JULY 17, 2018 and examined  
 and filed JULY 19, 2018

Signed Zachary T. Janz P.L.S. or R.C.E. No.: 8664

Title COUNTY SURVEYOR

County Surveyor's Comment \_\_\_\_\_





REFERENCES

(A) UNIVERSITY PARK II, PHASE 1, BOOK 72 OF OFFICIAL PLATS, PAGES 33-36

LEGEND:

- MONUMENT FOUND AND ACCEPTED 3/4" IRON PIPE L.S. TAG 6944 PER REF (A)
- SET 3/4" IRON PIPE TAGGED L.S. 8040, OR AS NOTED
- WC WITNESS CORNER AT DISTANCE NOTED

SCALE



1" = 40'