

CORNER RECORD

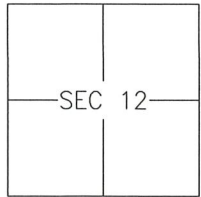
Agency Index 310-P

Document Number _____

City of MERCED

County of MERCED, California

Brief Legal Description LOTS 3-6 OF UNIVERSITY PARK II, PHASE 1, BOOK 72 OF OFFICIAL PLATS, PP. 33-36



T7S/R13E

CORNER TYPE

- Government Corner Control
 Meander Property
 Rancho Other

Date of Survey _____

COORDINATES (Optional)

- N. _____ E. _____
 Elevation _____
 Units Metric U.S. Survey Foot
 Horizontal Datum _____
 Zone _____ Epoch Date _____
 Vertical Datum: _____
 Complies with Public Resources Code §§8801-8819
 Complies with Public Resources Code §§8890-8902

PLS Act Ref.: 8765(d) 8771 8773 Other: _____

Corner/Monument: Left as found Established Rebuilt Pre-Construction
 Found and tagged Reestablished Referenced Post-Construction

Narrative of corner identified and monument as found and set or reset:
 See sheet #2 for description(s):

SURVEYOR'S STATEMENT

This Corner Record was prepared by me or under my direction in conformance with
 the Land Surveyor's Act on 13 July, 2018.
 Signed [Signature] P.L.S. or R.C.E. No.: 8040



COUNTY SURVEYOR'S STATEMENT

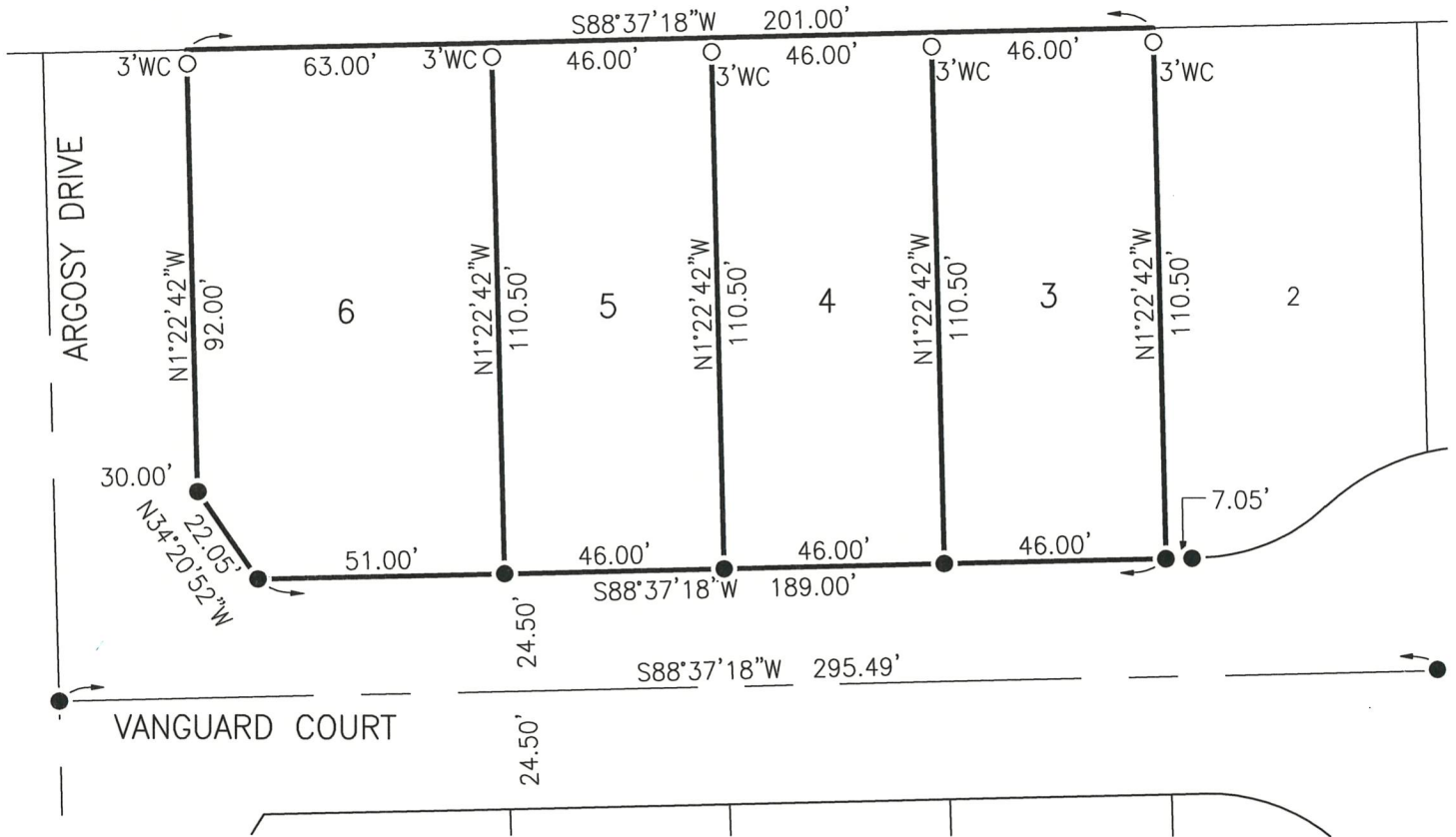
This Corner Record was received July 17, 2018 and examined
 and filed July 19, 2018.
 Signed Zachary T. Janz P.L.S. or R.C.E. No.: 8664
 Title COUNTY SURVEYOR



County Surveyor's Comment _____

NOTE

NO MONUMENTS WERE FOUND ON NORTH LINE OF LOTS 1-6 AND 41.
AS SHOWN ON (A) DUE TO RETAINING WALL CONSTRUCTION.



REFERENCES

(A) UNIVERSITY PARK II, PHASE 1, BOOK 72 OF OFFICIAL PLATS, PAGES 33-36

LEGEND:

- MONUMENT FOUND AND ACCEPTED 3/4" IRON PIPE L.S. TAG 6944 PER REF (A)
- SET 3/4" IRON PIPE TAGGED L.S. 8040, OR AS NOTED
- WC WITNESS CORNER AT DISTANCE NOTED

