

CORNER RECORD

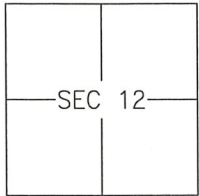
Agency Index 310-0

Document Number _____

City of Merced

County of Merced, California

Brief Legal Description Lot 21, University Park Subdivision, Official Plats, Vol. 66, Pgs. 1-4, M.C.R.



T7S/R13E

CORNER TYPE

- Government Corner Control
 Meander Property
 Rancho Other

Date of Survey 29 MARCH, 2018

COORDINATES (Optional)

- N. _____ E. _____
 Elevation _____
 Units Metric U.S. Survey Foot
 Horizontal Datum _____
 Zone _____ Epoch Date _____
 Vertical Datum: _____
 Complies with Public Resources Code §§8801-8819
 Complies with Public Resources Code §§8890-8902

PLS Act Ref.: 8765(d) 8771 8773

Other: _____

- Corner/Monument: Left as found Established Rebuilt Pre-Construction
 Found and tagged Reestablished Referenced Post-Construction

Narrative of corner identified and monument as found and set or reset:

See sheet #2 for description(s):

FOUND MONUMENTS FOR LOT 21 OF UNIVERSITY PARK SUBDIVISION, OFFICIAL PLATS VOLUME 66, PAGES 1-4, MERCED COUNTY RECORDS, AS SHOWN ON SHEET 2. SET 2 MISSING CORNERS WITH MONUMENTS AS NOTED.

SURVEYOR'S STATEMENT

This Corner Record was prepared by me or under my direction in conformance with

the Land Surveyor's Act on 24 APRIL, 2018.

Signed [Signature] P.L.S. or R.C.E. No.: 8040



COUNTY SURVEYOR'S STATEMENT

This Corner Record was received APRIL 27, 2018 and examined

and filed APRIL 30, 2018.

Signed Zachary T. Janz P.L.S. or R.C.E. No.: 8664

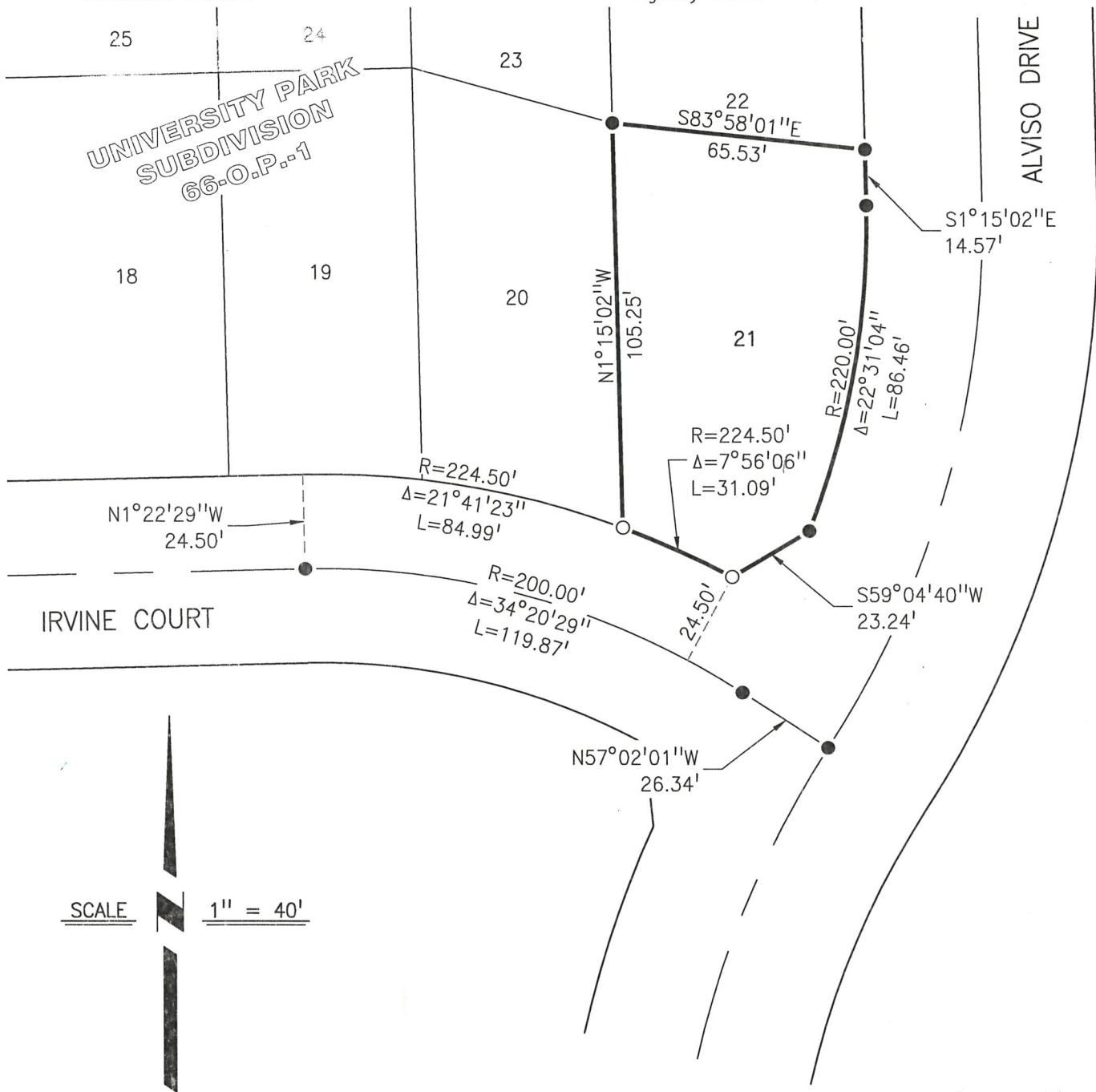
Title COUNTY SURVEYOR

County Surveyor's Comment _____



Document Number

Agency Index



SCALE 1" = 40'

LEGEND:

- FOUND AND ACCEPTED MONUMENT PER (R1)
- SET NAIL WITH BRASS TAG STAMPED LS 8040 IN CONCRETE
- M.C.R. MERCED COUNTY RECORDS
- O.P. OFFICIAL PLATS

REFERENCES

(R1) UNIVERSITY PARK SUBDIVISION, VOLUME 66 OF OFFICIAL PLATS, PAGES 1 TO 4, M.C.R.

NOTE

ALL DIMENSIONS ARE MEASURED PER (R1) OR CALCULATED FROM (R1).