

CORNER RECORD

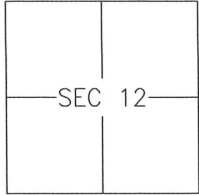
Agency Index 310-BB

Document Number _____

City of MERCED

County of MERCED, California

Brief Legal Description LOTS 8 & 10 OF UNIVERSITY PARK SUBDIVISION 66-OP-1



T7S/R13E

CORNER TYPE

- Government Corner Control
- Meander Property
- Rancho Other

Date of Survey 2018-10-25

COORDINATES (Optional)

- N. _____ E. _____
- Elevation _____
- Units Metric U.S. Survey Foot
- Horizontal Datum _____
- Zone _____ Epoch Date _____
- Vertical Datum: _____
- Complies with Public Resources Code §§8801-8819
- Complies with Public Resources Code §§8890-8902

PLS Act Ref.: 8765(d) 8771 8773 Other: _____

Corner/Monument: Left as found Established Rebuilt Pre-Construction

Found and tagged Reestablished Referenced Post-Construction

Narrative of corner identified and monument as found and set or reset:

See sheet #2 for description(s):

SURVEYOR'S STATEMENT

This Corner Record was prepared by me or under my direction in conformance with the Land Surveyor's Act on 8 FEBRUARY, 2019.

Signed [Signature] P.L.S. or R.C.E. No.: 8040



COUNTY SURVEYOR'S STATEMENT

This Corner Record was received FEBRUARY 14, 2019 and examined and filed FEBRUARY 15, 2019.

Signed Zach T. Janz P.L.S. or R.C.E. No.: 8664
Title COUNTY SURVEYOR



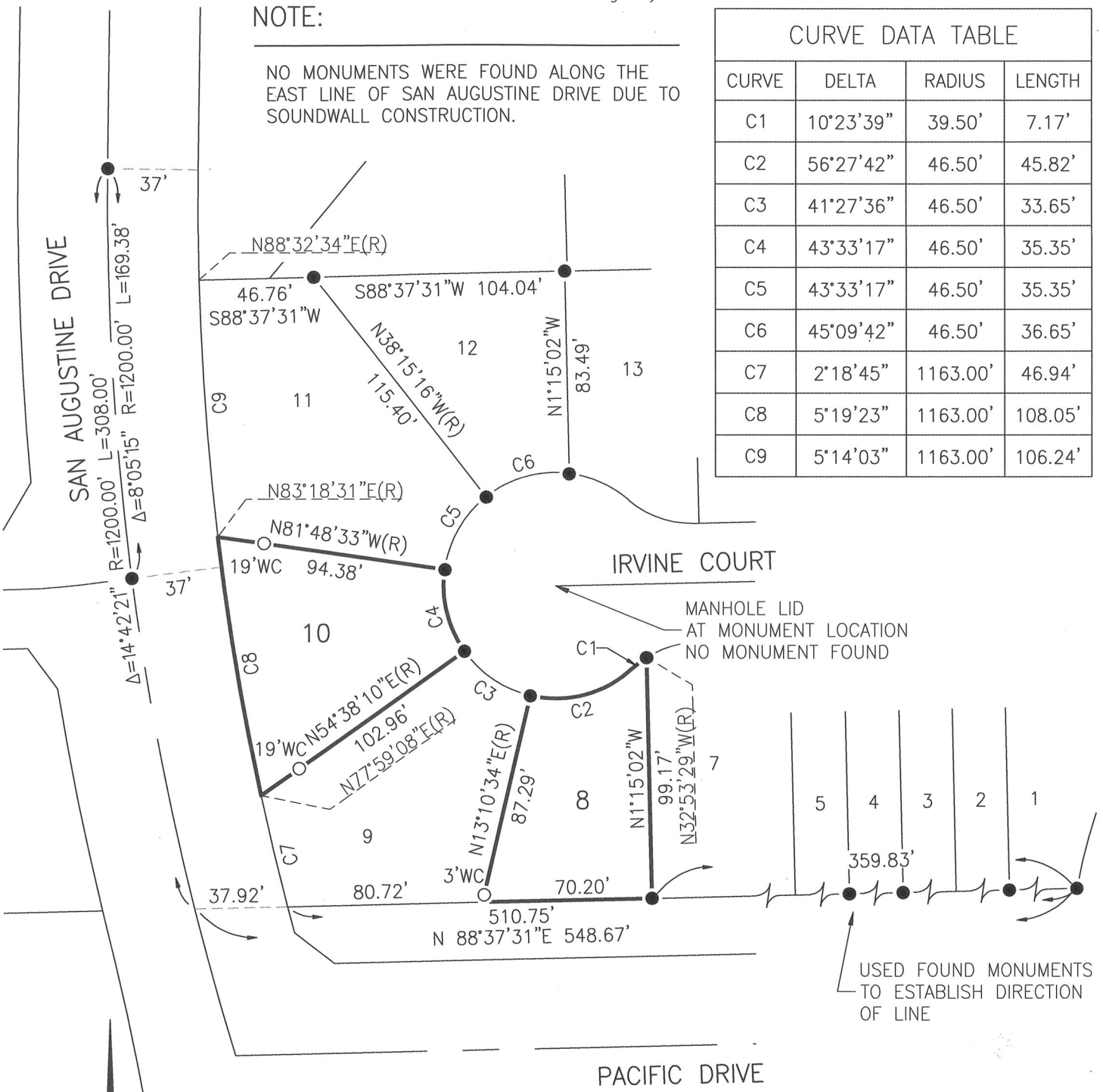
County Surveyor's Comment _____

NOTE:

NO MONUMENTS WERE FOUND ALONG THE EAST LINE OF SAN AUGUSTINE DRIVE DUE TO SOUNDWALL CONSTRUCTION.

CURVE DATA TABLE

CURVE	DELTA	RADIUS	LENGTH
C1	10°23'39"	39.50'	7.17'
C2	56°27'42"	46.50'	45.82'
C3	41°27'36"	46.50'	33.65'
C4	43°33'17"	46.50'	35.35'
C5	43°33'17"	46.50'	35.35'
C6	45°09'42"	46.50'	36.65'
C7	2°18'45"	1163.00'	46.94'
C8	5°19'23"	1163.00'	108.05'
C9	5°14'03"	1163.00'	106.24'



REFERENCE

(A) UNIVERSITY PARK SUBDIVISION OFFICIAL PLATS, VOLUME 66, PAGES 1-4

LEGEND:

- FOUND 3/4" IRON PIPE, TAGGED L.S. 6944
- SET 3/4" IRON PIPE, TAGGED LS 8040, OR AS NOTED
- WC WITNESS CORNER AT DISTANCE NOTED
- SFN SEARCHED, FOUND NOTHING

SCALE 1" = 60'