

# CORNER RECORD

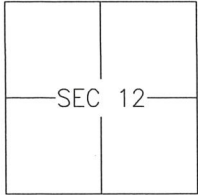
Agency Index 310-AA

Document Number \_\_\_\_\_

City of MERCED

County of MERCED, California

Brief Legal Description LOTS 232-233 OF UNIVERSITY PARK 2-PHASE 1 72-OP-33



T7S/R13E

### CORNER TYPE

- Government Corner  Control   
 Meander  Property   
 Rancho  Other

Date of Survey 2018-05-25

### COORDINATES (Optional)

- N. \_\_\_\_\_ E. \_\_\_\_\_  
 Elevation \_\_\_\_\_  
 Units Metric  U.S. Survey Foot   
 Horizontal Datum \_\_\_\_\_  
 Zone \_\_\_\_\_ Epoch Date \_\_\_\_\_  
 Vertical Datum: \_\_\_\_\_  
 Complies with Public Resources Code §§8801-8819  
 Complies with Public Resources Code §§8890-8902

PLS Act Ref.:  8765(d)  8771  8773 Other: \_\_\_\_\_

Corner/Monument:  Left as found  Established  Rebuilt  Pre-Construction  
 Found and tagged  Reestablished  Referenced  Post-Construction

Narrative of corner identified and monument as found and set or reset:

See sheet #2 for description(s):

### SURVEYOR'S STATEMENT

This Corner Record was prepared by me or under my direction in conformance with the Land Surveyor's Act on 8 FEBRUARY, 2019.

Signed [Signature] P.L.S. or R.C.E. No.: 8040



### COUNTY SURVEYOR'S STATEMENT

This Corner Record was received FEBRUARY 14, 2019 and examined and filed FEBRUARY 15, 2019.

Signed Zach T. Janz P.L.S. or R.C.E. No.: 8664  
 Title COUNTY SURVEYOR



County Surveyor's Comment \_\_\_\_\_  
 \_\_\_\_\_  
 \_\_\_\_\_  
 \_\_\_\_\_

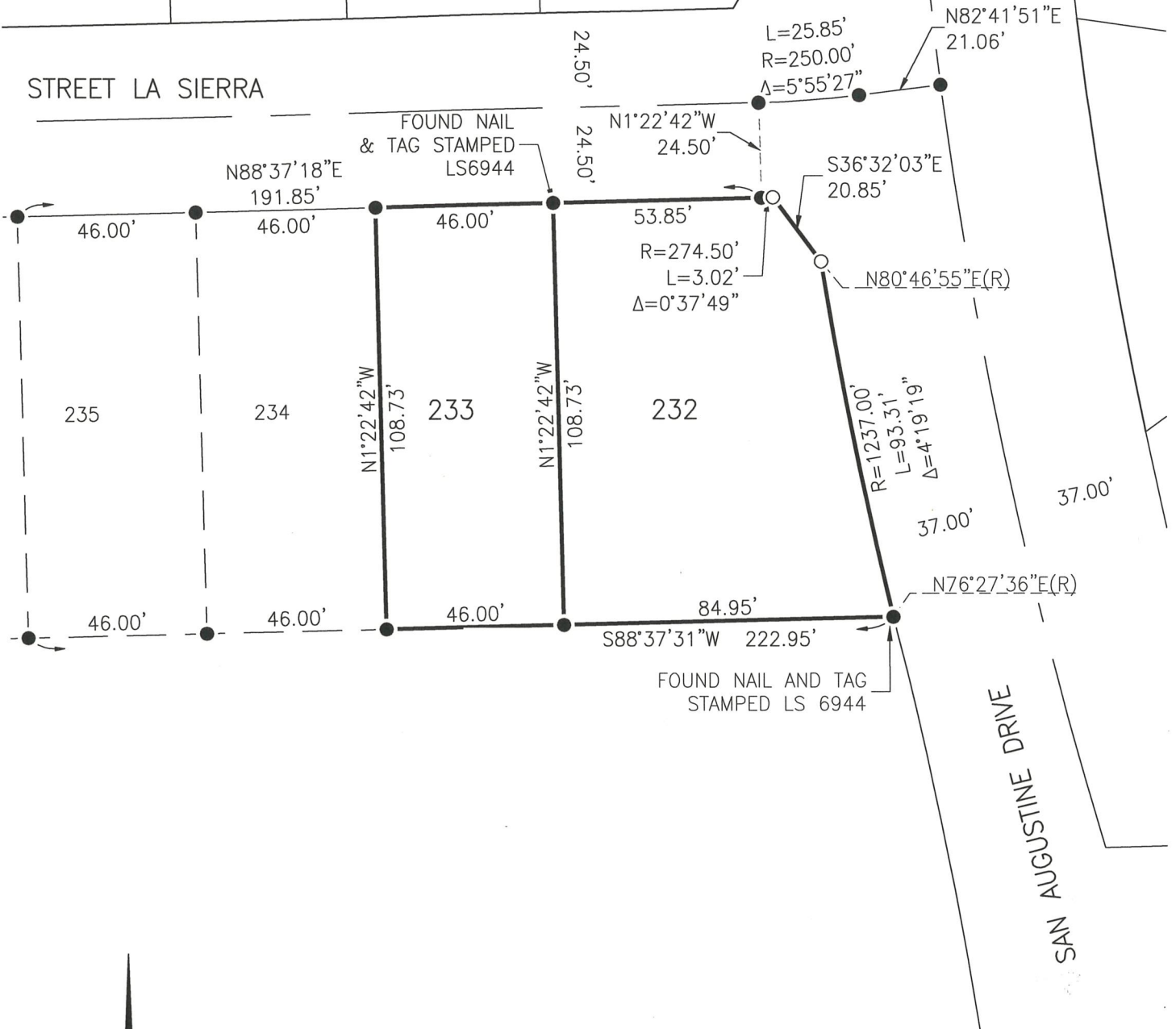
228

229

230

231

STREET LA SIERRA



REFERENCE

(A) UNIVERSITY PARK 2 – PHASE 1 OFFICIAL PLATS, VOLUME 72, PAGES 33-36

LEGEND:

- FOUND 3/4" IRON PIPE TAGGED LS 6944 PER (A), OR AS NOTED
- SET 3/4" IRON PIPE, TAGGED LS 8040, OR AS NOTED

SCALE

1" = 40'