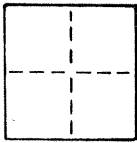


# CORNER RECORD

COUNTY OF MERCED T. 7 S. R. 13 E. M.D.R. & MERIDIAN CALIFORNIA

CORNER TYPE: GOV'T. CORNER  MEANDER  RANCHO  CONTROL  OTHER

CORNER IDENTIFICATION — DATE OF VISIT 2-26-27 1990



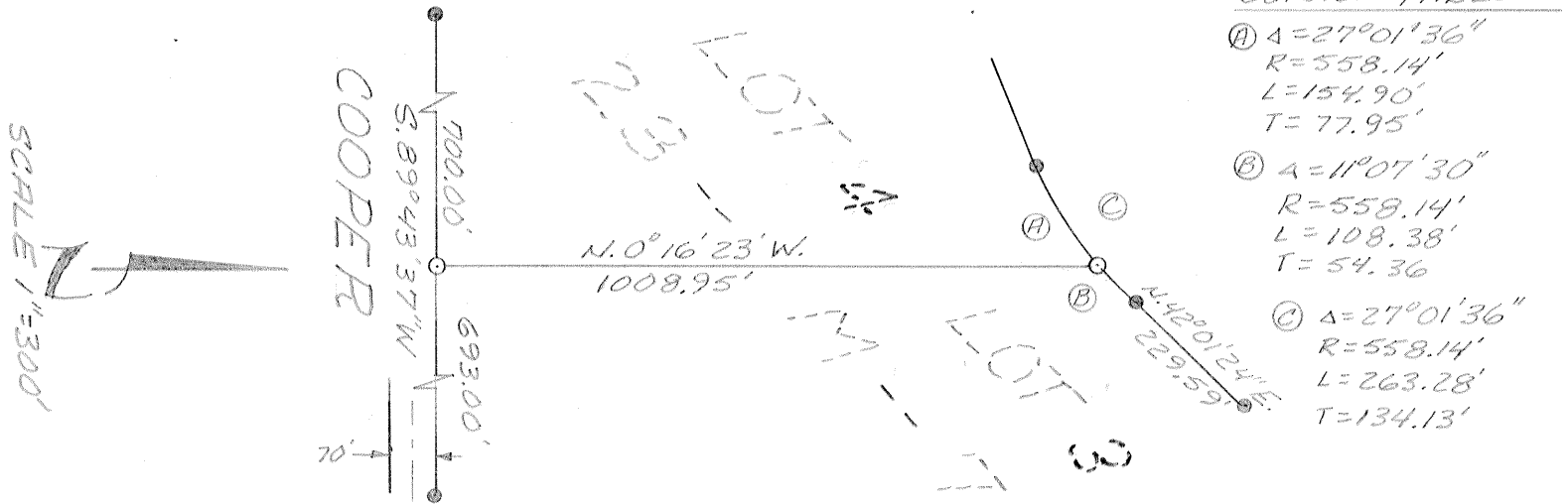
CORNER — LEFT AS FOUND  FOUND AND TAGGED  REESTABLISHED OBLITERATED CORNER  REBUILT

PHYSICAL DESCRIPTION OF CORNER FOUND; EVIDENCE AND METHOD USED TO IDENTIFY OR REESTABLISH  
3/4" I.P. TAGGED R.C.E. 10990. PRORATION WITHIN SUBDIVISION.

PHYSICAL DESCRIPTION OF MONUMENTS REBUILT OR PERPETUATED  
3/4" I.P. TAGGED L.S. 5122

CALIFORNIA COORDINATE SYSTEM ORDER: FIRST  SECOND  THIRD   
 STATIONS USED: NGS (USC & GS)  STATE  COUNTY  OTHER  STATION \_\_\_\_\_  
 ZONE \_\_\_\_\_ ELEVATION \_\_\_\_\_ NORTHINGS (Y) \_\_\_\_\_ EASTINGS (X) \_\_\_\_\_

SKETCH: (Include reference tie or witness points, remarks and topo of area)



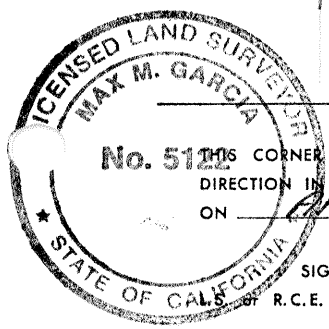
CURVE TABLE

- Ⓐ Δ = 27° 01' 36"  
R = 558.14'  
L = 154.90'  
T = 77.95'
- Ⓑ Δ = 11° 07' 30"  
R = 558.14'  
L = 108.38'  
T = 54.36
- Ⓒ Δ = 27° 01' 36"  
R = 558.14'  
L = 263.28'  
T = 134.13'

LEGEND

- ⊙ SET 3/4" I.P. TAGGED L.S. 5122
- FOUND 3/4" I.P. TAGGED R.C.E. 10990

NOTE; ALL DIMENSIONS SHOWN MEASURED & RECORDED PER \_\_\_\_\_



**SURVEYOR'S CERTIFICATE**  
 THIS CORNER RECORD WAS PREPARED BY ME OR UNDER MY DIRECTION IN CONFORMANCE WITH THE LAND SURVEYORS ACT ON APRIL 24 1990.  
 SIGNED: Max M. Garcia  
 R.C.E. No.: LS 5122 EXP. 6/30/91

**COUNTY SURVEYOR'S CERTIFICATE**  
 THE CORNER RECORD WAS RECEIVED Exp. Sept 30, 1992 AND EXAMINED AND FILED 5-8-1990.  
 BY: [Signature]  
 TITLE: Duty to Survey  
 DOCUMENT No. 3092  
 STATEMENT ON BACK OF SHEET YES  NO

