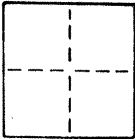


CORNER RECORD

COUNTY OF MERCED T. 7 S. R. 13 E. MDB. 1 MERIDIAN CALIFORNIA
 CORNER TYPE: GOV'T. CORNER MEANDER RANCHO CONTROL OTHER
 CORNER IDENTIFICATION — DATE OF VISIT 2-26-87 1990



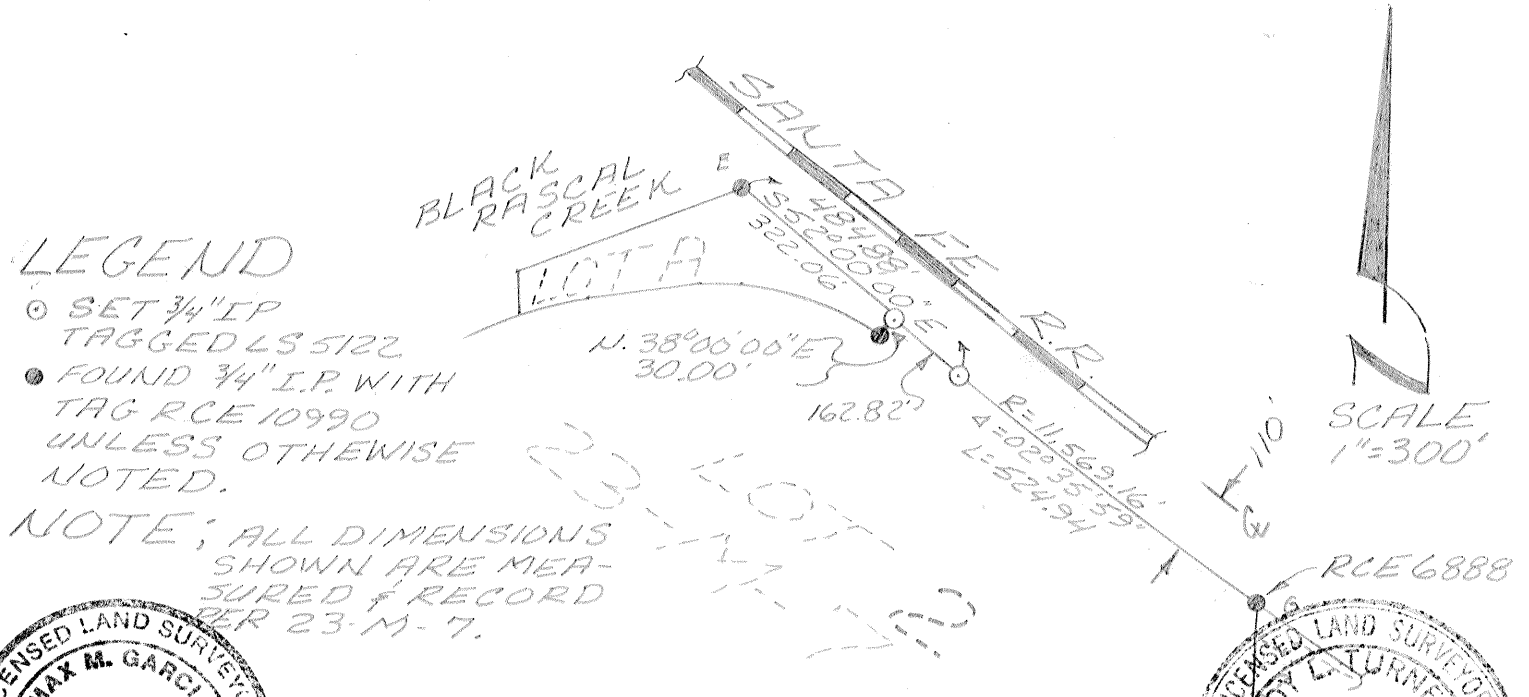
CORNER — LEFT AS FOUND FOUND AND TAGGED REESTABLISHED OBLITERATED CORNER REBUILT

PHYSICAL DESCRIPTION OF CORNER FOUND; EVIDENCE AND METHOD USED TO IDENTIFY OR REESTABLISH
3/4" I.P. TAGGED RCE 10990 OR RCE 6888 AS SHOWN ON SKETCH BELOW. PRORATION WITHIN SUBDIVISION.

PHYSICAL DESCRIPTION OF MONUMENTS REBUILT OR PERPETUATED
3/4" I.P. TAGGED LS 5122

CALIFORNIA COORDINATE SYSTEM ORDER: FIRST SECOND THIRD
 STATIONS USED: NGS (USC & GS) STATE COUNTY OTHER STATION _____ STATION _____
 ZONE _____ ELEVATION _____ NORTHINGS (Y) _____ EASTINGS (X) _____

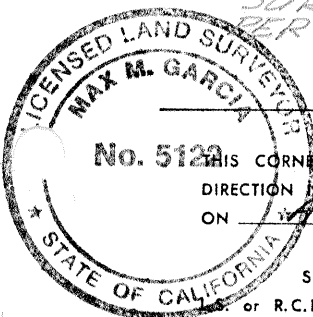
SKETCH: (Include reference tie or witness points, remarks and topo of area)



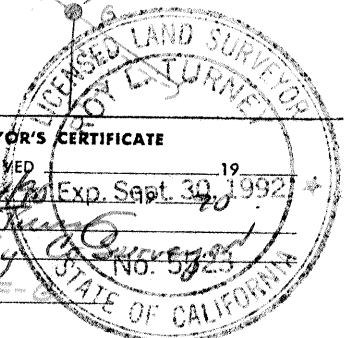
LEGEND

- SET 3/4" I.P. TAGGED LS 5122
- FOUND 3/4" I.P. WITH TAG RCE 10990 UNLESS OTHERWISE NOTED.

NOTE: ALL DIMENSIONS SHOWN ARE MEASURED & RECORDED PER 23-M-7.



SURVEYOR'S CERTIFICATE
 THIS CORNER RECORD WAS PREPARED BY ME OR UNDER MY DIRECTION IN CONFORMANCE WITH THE LAND SURVEYORS ACT ON APRIL 24 1990.
 SIGNED: Max M. Garcia
 or R.C.E. No.: LS 5122 EXP. 6/30/91



COUNTY SURVEYOR'S CERTIFICATE
 THE CORNER RECORD WAS RECEIVED AND EXAMINED AND FILED 5/20/90 Exp. Sept. 30, 1992.
 BY: Roy L. Turner
 TITLE: Deputy County Surveyor
 DOCUMENT No. 309 E-F-C
 STATEMENT ON BACK OF SHEET YES NO