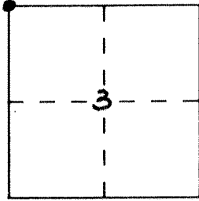


CORNER RECORD

Document Number 305

City of \_\_\_\_\_ County of MERCED, California

Brief Legal Description N.W. COR. SEC. 3 1/3



CORNER TYPE

Government Corner  Control   
Meander  Property   
Rancho  Other   
Date of Survey 3-12-92

COORDINATES  
(Optional)

N. \_\_\_\_\_  
E. \_\_\_\_\_  
Zone \_\_\_\_\_ Datum \_\_\_\_\_  
Elev. \_\_\_\_\_

Corner — Left as found  Found and tagged  Established  Reestablished  Rebuilt

Identification and type of corner found: Evidence used to identify or procedure used to establish or reestablish the corner:

ED. 3/4" I.P. IN MAIL BOX AS PER. 50 P.M. 9

BK. G43-8

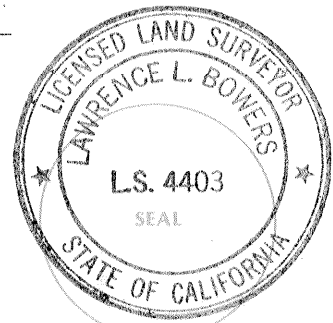
A description of the physical condition of the monument as found and as set or reset:

Not affected by paving.

SURVEYOR'S STATEMENT

This Corner Record was prepared by me or under my direction in conformance with the Land Surveyors' Act on Sept 3 1993.

Signed Lawrence L. Bowers L.S. or R.C.E. Number \_\_\_\_\_

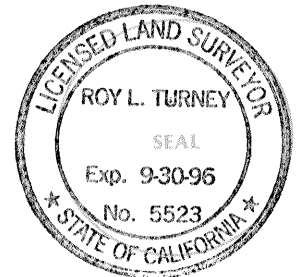


EXP. 9-30-93

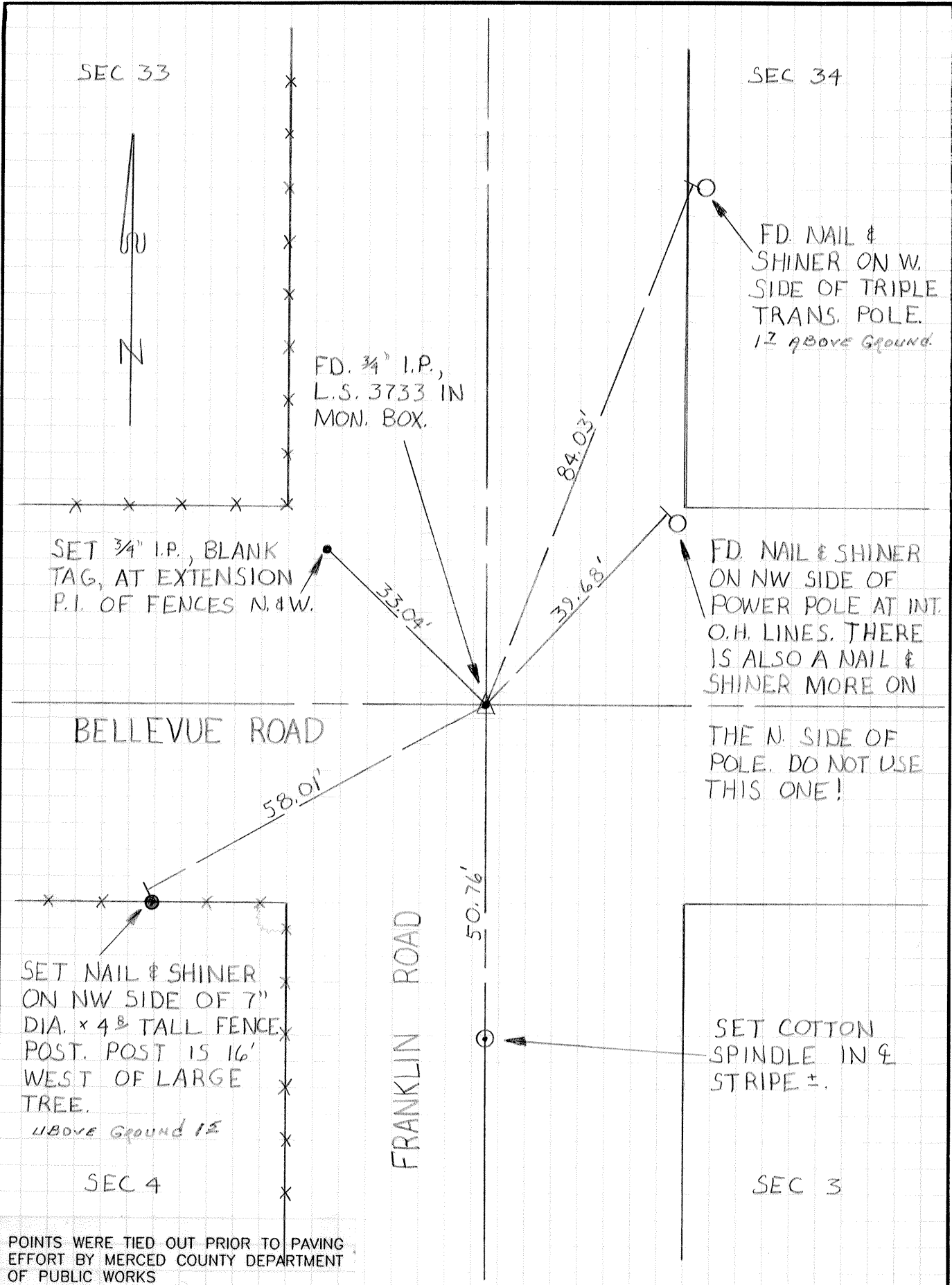
COUNTY SURVEYOR'S STATEMENT

This Corner Record was received 9-3- 1993 and examined and filed 9-7- 1993.

Signed Roy L. Turney Title Dep. Co. Surveyor

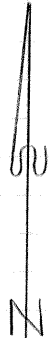


County Surveyor's Comment \_\_\_\_\_



SEC 33

SEC 34



FD. 3/4" I.P.,  
L.S. 3733 IN  
MON. BOX.

FD. NAIL &  
SHINER ON W.  
SIDE OF TRIPLE  
TRANS. POLE.  
12' ABOVE GROUND.

SET 3/4" I.P., BLANK  
TAG, AT EXTENSION  
P.I. OF FENCES N. & W.

FD. NAIL & SHINER  
ON NW SIDE OF  
POWER POLE AT INT.  
O.H. LINES. THERE  
IS ALSO A NAIL &  
SHINER MORE ON

BELLEVUE ROAD

THE N. SIDE OF  
POLE. DO NOT USE  
THIS ONE!

FRANKLIN ROAD

SET NAIL & SHINER  
ON NW SIDE OF 7"  
DIA. x 4' TALL FENCE  
POST. POST IS 16'  
WEST OF LARGE  
TREE.  
12' ABOVE GROUND

SET COTTON  
SPINDLE IN ♀  
STRIPE ±.

SEC 4

SEC 3

POINTS WERE TIED OUT PRIOR TO PAVING  
EFFORT BY MERCED COUNTY DEPARTMENT  
OF PUBLIC WORKS

Note: Not disturbed by paving job. Page 2 of 2