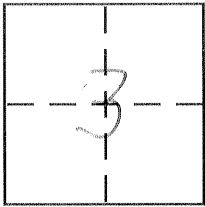


CORNER RECORD

Document Number 305-CC

City of _____ County of Merced, California

Brief Legal Description Witness corner to N.W. corner of Lot 41, 5 O.P. 28



T. 7 S., R. 13 E.
m.d.B.E.M.

CORNER TYPE

Government Corner Control
Meander Property
Rancho Other
Date of Survey March 19, 2004

COORDINATES (Optional)

N. _____
E. _____
Zone _____ NAD27 NAD83
NAD83 Epoch _____
Elev. _____
Vert. Datum: NGVD29 NAVD88
Meas. Units: Metric Imperial

Corner - Left as found Found and tagged Established Reestablished Rebuilt

Identification and type of corner found: Evidence used to identify or procedure used to establish or reestablish the corner:

Found the bottom of a 3"x4" post. Rotted bottom measured 2 1/2" x 2 1/2". Bill Hay, current owner, verified location. Measured from existing subdivision monuments

A description of the physical condition of the monument as found and as set or reset:

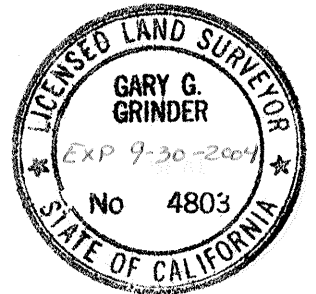
Set 1 3/8" O.P.I.P. in center of rotted post. Tagged L.S. 4803.

SURVEYOR'S STATEMENT

This Corner Record was prepared by me or under my direction in conformance with

the Land Surveyor's Act on May 11 2004

Signed Gary G. Grinder P.L.S. or R.C.E. No. 4803



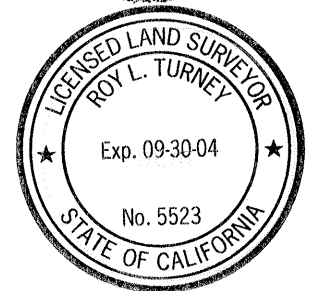
COUNTY SURVEYOR'S STATEMENT

This Corner Record was received 5-11-04

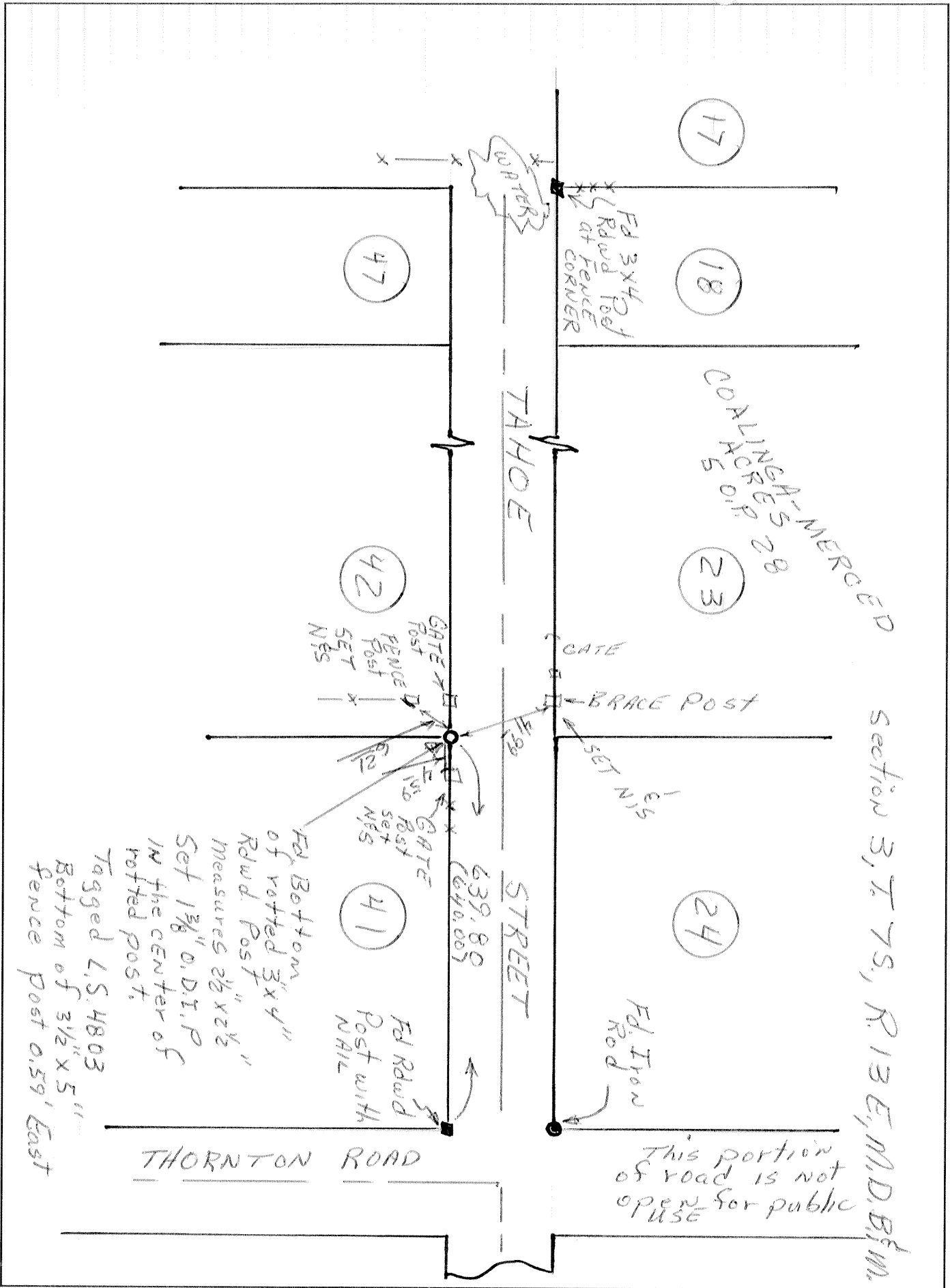
and examined and filed 5-17-04

Signed Roy L. Turney P.L.S. or R.C.E. No. 5523

Title DEP. CO. SURVEYOR



County Surveyor's Comment _____



Section 3, T. 7S, R. 13 E, M.D. B.M.