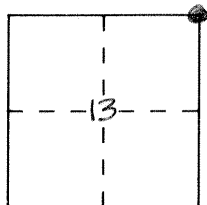


CORNER RECORD

Document Number 303

City of _____ County of MERCED, California

Brief Legal Description N.E. CORNER SECTION 13 T6S R12E



CORNER TYPE

Government Corner Control
 Meander Property
 Rancho Other
 Date of Survey 10-4-91

COORDINATES (Optional)

N. _____
 E. _____
 Zone _____ Datum _____
 Elev. _____

Corner — Left as found Found and tagged Established Reestablished Rebuilt

Identification and type of corner found: Evidence used to identify or procedure used to establish or reestablish the corner:

Found 3/4" Iron Pipe, monument well set over monument.

A description of the physical condition of the monument as found and as set or reset: _____

SURVEYOR'S STATEMENT

This Corner Record was prepared by me or under my direction in conformance with the Land Surveyors' Act on 3-16 1992.

Signed [Signature] L.S. or R.C.E. Number _____



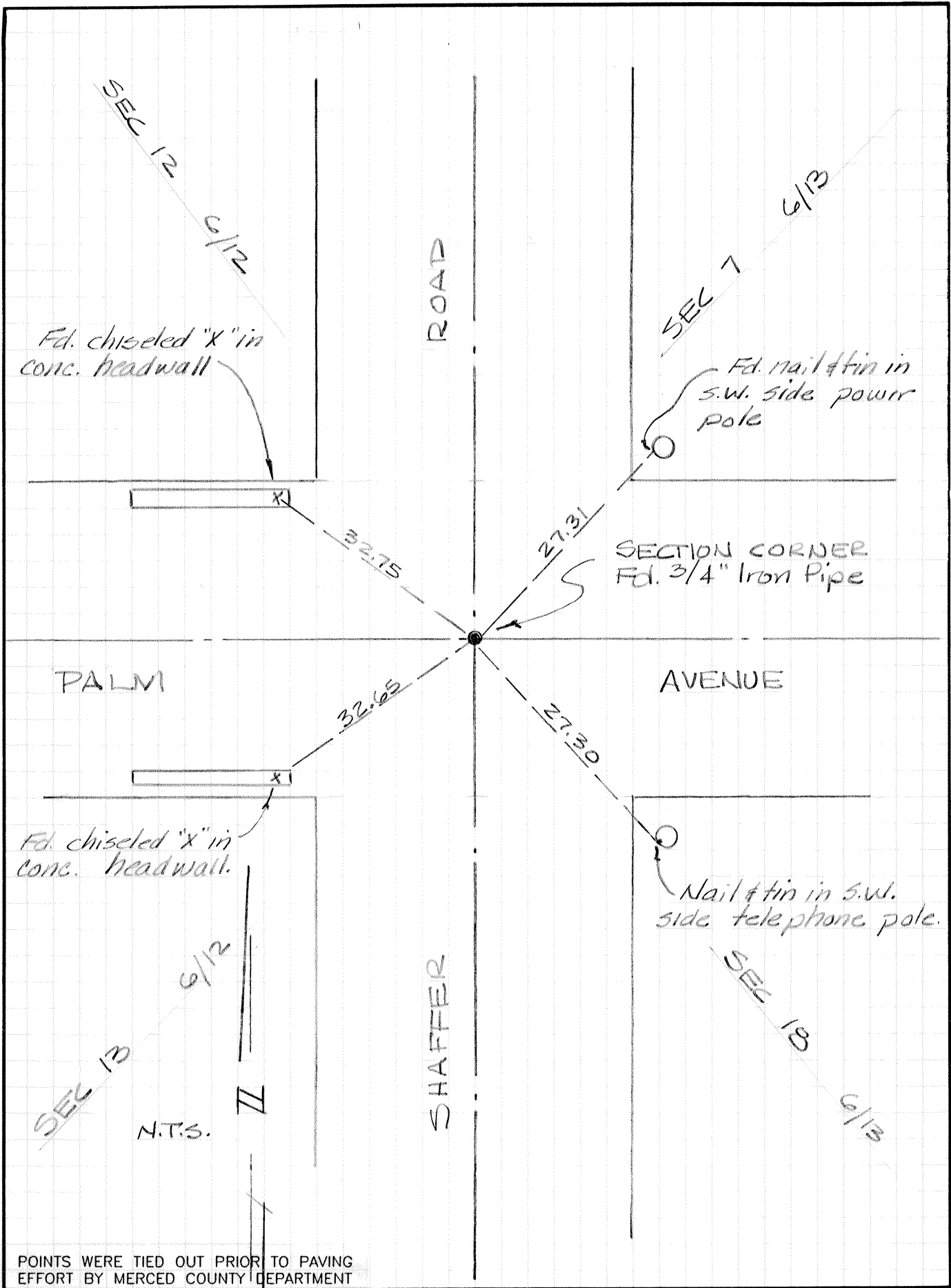
COUNTY SURVEYOR'S STATEMENT

This Corner Record was received 3-17 1992 and examined and filed 3-19 1992.

Signed [Signature] Title Deputy Co Surveyor

County Surveyor's Comment See P.M. 40-29





POINTS WERE TIED OUT PRIOR TO PAVING
EFFORT BY MERCED COUNTY DEPARTMENT
OF PUBLIC WORKS