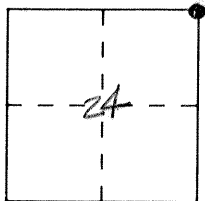


CORNER RECORD

Document Number 302

City of _____ County of MERCED, California

Brief Legal Description N.E. CORNER SECTION 24 T6S R12E



CORNER TYPE

- Government Corner Control
- Meander Property
- Rancho Other
- Date of Survey 10-7-91

COORDINATES (Optional)

N. _____
 E. _____
 Zone _____ Datum _____
 Elev. _____

Corner — Left as found Found and tagged Established Reestablished Rebuilt

Identification and type of corner found: Evidence used to identify or procedure used to establish or reestablish the corner:
Found concrete monument with rebar, down 2'
Set 3/4" Iron Pipe, L.S. 4403 down 0'. Monument
well set over monument.

A description of the physical condition of the monument as found and as set or reset: _____

SURVEYOR'S STATEMENT

This Corner Record was prepared by me or under my direction in conformance with the Land Surveyors' Act on 3-16 1992.

Signed [Signature] L.S. or R.C.E. Number _____



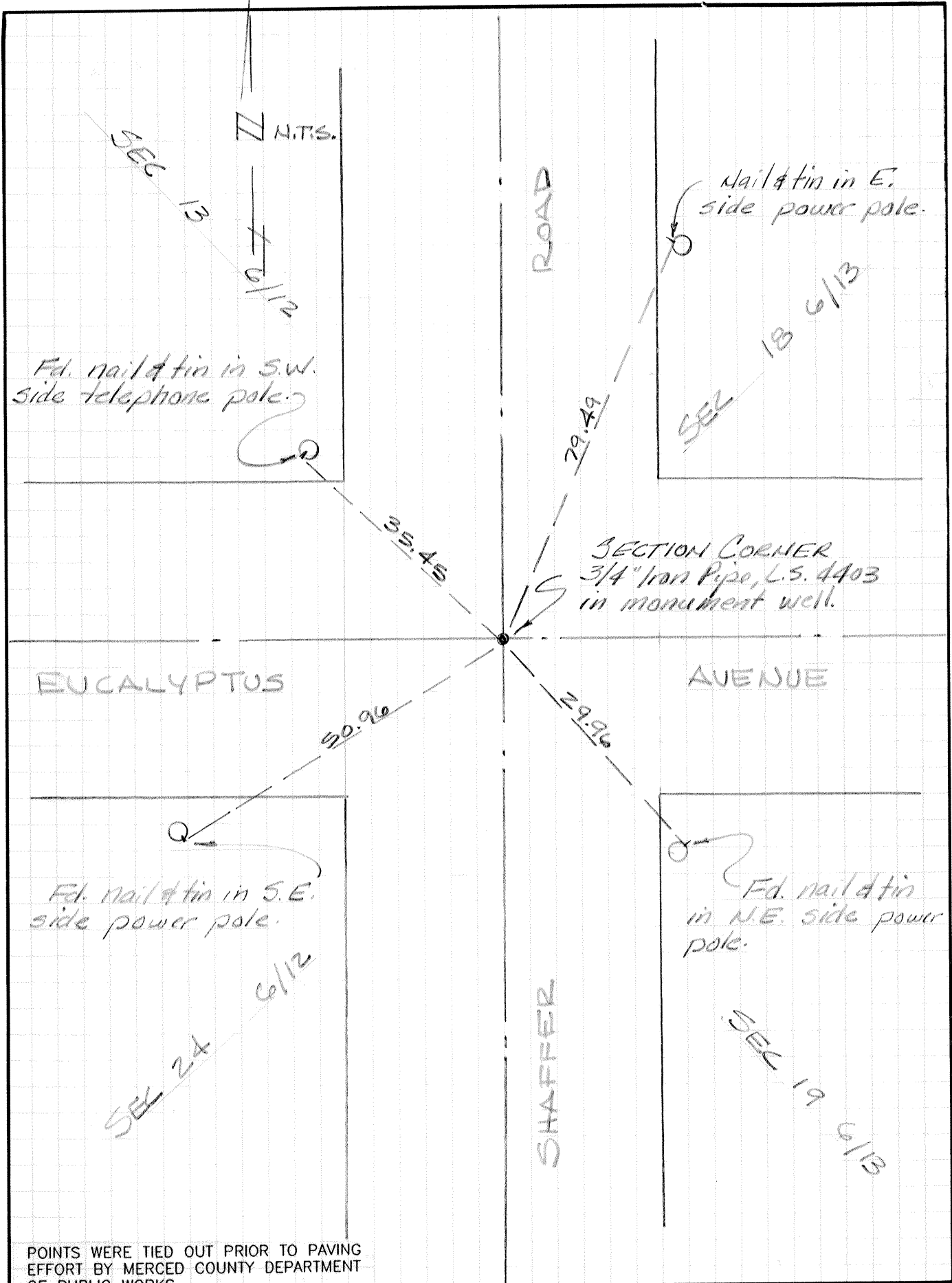
COUNTY SURVEYOR'S STATEMENT

This Corner Record was received 3-17- 1992 and examined and filed 3-19- 1992.

Signed [Signature] Title Dep. Co. Surveyor



County Surveyor's Comment See Parcel Map BK. 40 Pg. 27



POINTS WERE TIED OUT PRIOR TO PAVING
EFFORT BY MERCED COUNTY DEPARTMENT
OF PUBLIC WORKS