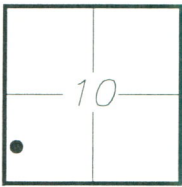


CORNER RECORD

Document Number 306-X

City of _____ County of Merced, California

Brief Legal Description Northwest Corner of Lot 5, Bk 1 of Surveys Pg. 7 M.C.R. A.P. NO. _____



7/13

CORNER TYPE

Government Corner Control
Meander Property
Rancho Other
Date of Survey 8/16/16

COORDINATES (Optional)

N. _____
E. _____
Zone _____ NAD27 NAD83
NAD83 Epoch _____
Elev. _____
Vet. Datum: NGVD29 NAVD88
Meas. Units: Metric Imperial

Corner - Left as found Found and tagged Established Reestablished Rebuilt

Identification and type of corner found: Evidence used to identify or procedure used to establish or reestablish the corner:

SEE SKETCH

A description of the physical condition of the monument as found and as set or reset:

SEE SKETCH

SURVEYOR'S STATEMENT

This Corner Record was prepared by me or under my direction in conformance with the Land Surveyor's Act on OCTOBER 19TH 20 16

Signed Michael S. Morris P.L.S. or R.C.E. No. 8665



COUNTY SURVEYOR'S STATEMENT

This Corner Record was received OCTOBER 19TH 20 16

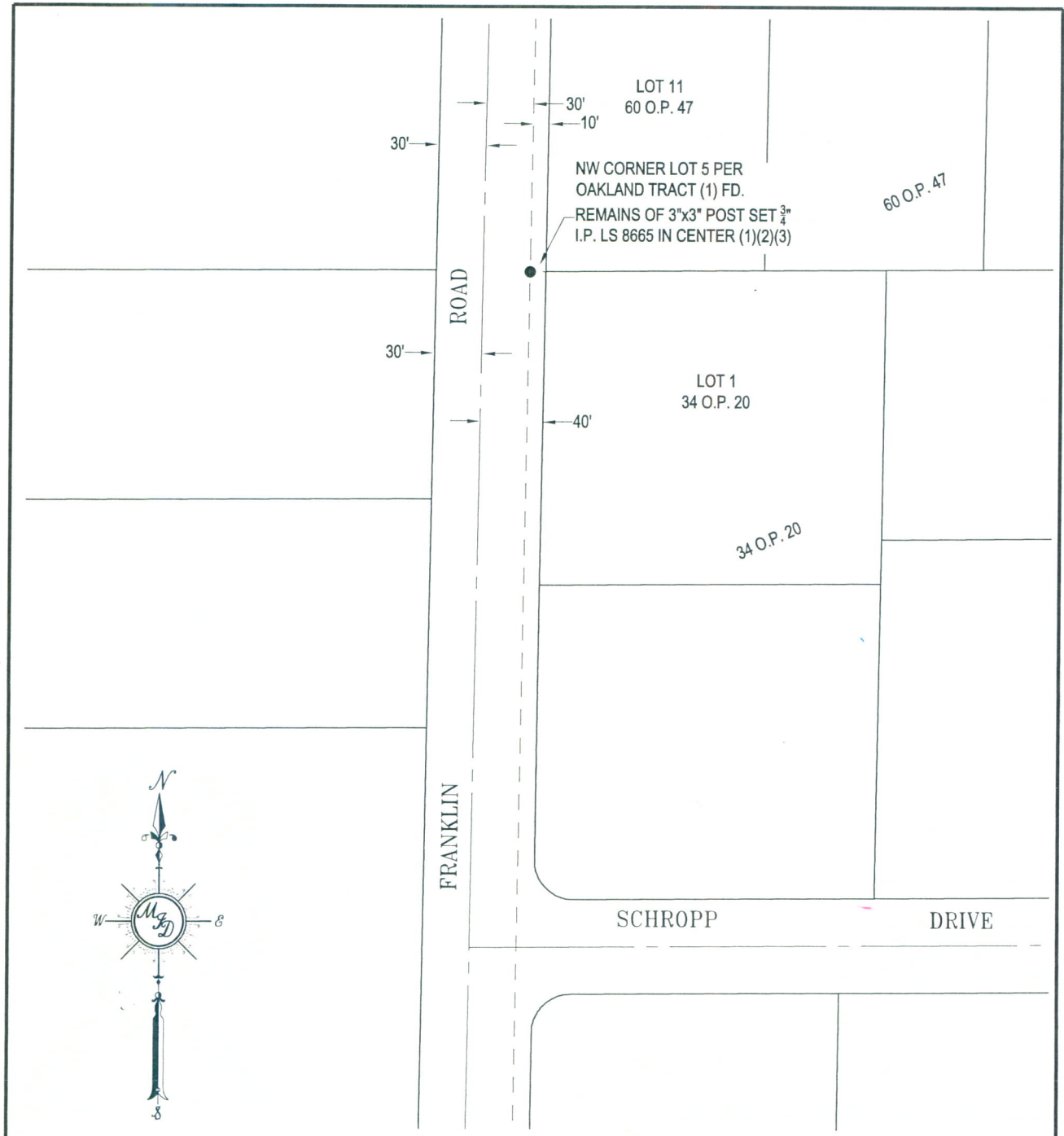
and examined and filed NOVEMBER 4TH 20 16

Signed Zachary T. Janz P.L.S. or R.C.E. No. 8664

Title COUNTY SURVEYOR

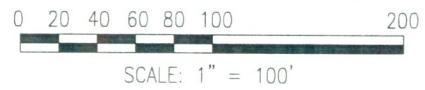


County Surveyor's Comment: _____



REFERENCES

1. MAP OF THE OAKLAND TRACT, BK. 1 OF SURVEYS PG. 7, M.C.R.
2. MAP OF TUMBLEWEED ESTATES, VOL. 30 OF OFFICIAL PLATS PG. 40, M.C.R.
3. MAP OF TUMBLEWEED ESTATES NO. 2, VOL. 34 OF OFFICIAL PLATS PG. 20, M.C.R.



● FD. AS NOTED