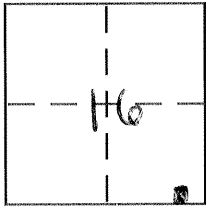


CORNER RECORD

Document Number 295-0

City of _____ County of MERCED, California

Brief Legal Description Lot 79 70.P. 14 M.G.R.



CORNER TYPE

Government Corner Control
Meander Property
Rancho Other
Date of Survey 8-24-06

COORDINATES (Optional)

N. _____
E. _____
Zone _____ NAD27 NAD83
NAD83 Epoch _____
Elev. _____
Vert. Datum: NGVD29 NAVD88
Meas. Units: Metric Imperial

Corner – Left as found Found and tagged Established Reestablished Rebuilt

Identification and type of corner found: Evidence used to identify or procedure used to establish or reestablish the corner:

SEE SKETCH

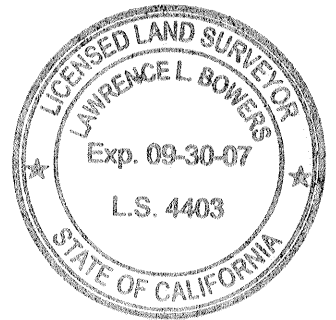
A description of the physical condition of the monument as found and as set or reset:

SEE SKETCH

SURVEYOR'S STATEMENT

This Corner Record was prepared by me or under my direction in conformance with the Land Surveyor's Act on 12-22-06

Signed [Signature] P.L.S or R.C.E. No. _____



COUNTY SURVEYOR'S STATEMENT

This Corner Record was received Dec. 22, 2006

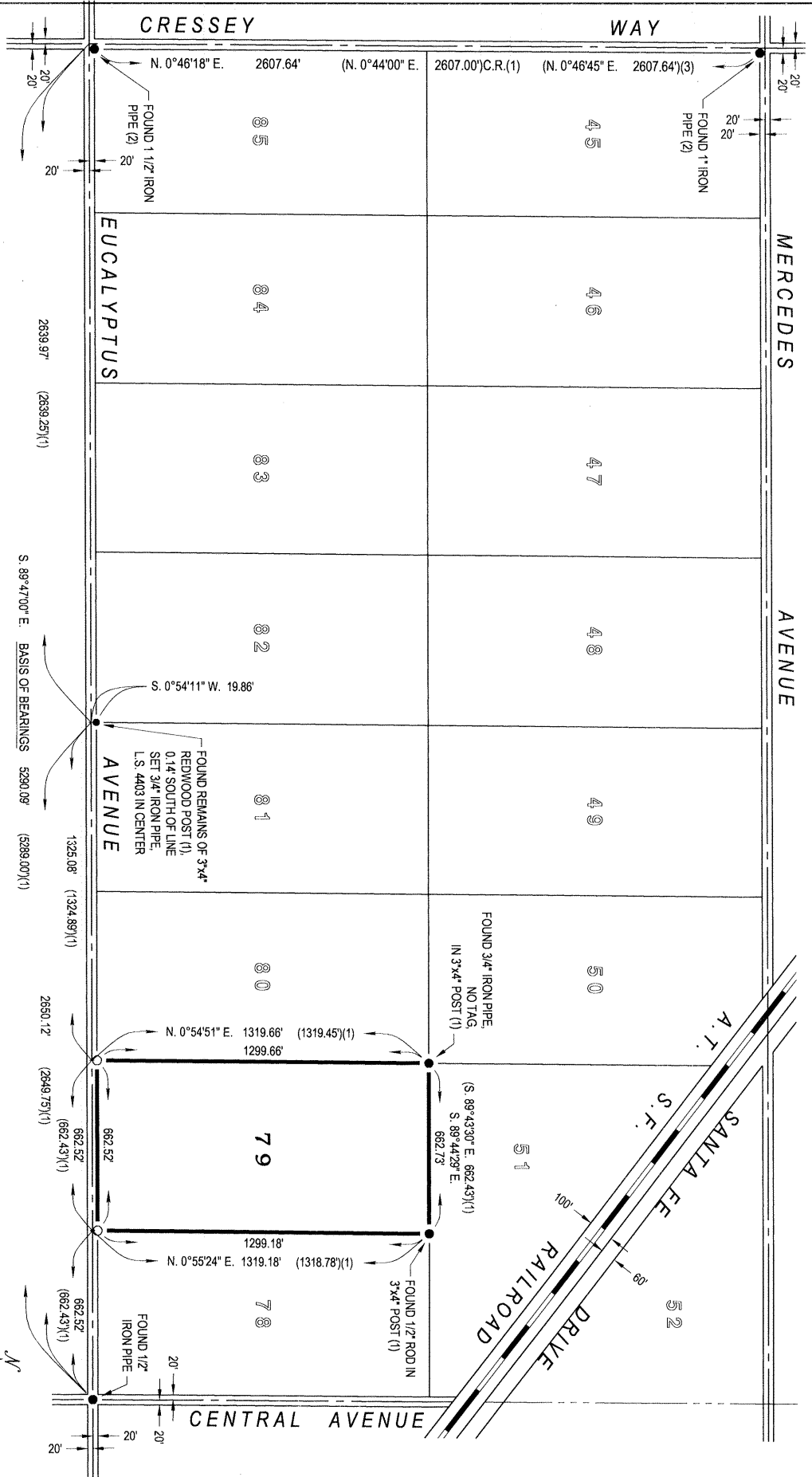
and examined and filed Dec. 26, 2006

Signed [Signature] P.L.S or ~~R.C.E.~~ No. 4895

Title Dep. County Surveyor

County Surveyor's Comment _____





LEGEND

- Found and accepted monument as indicated
- Set 3/4" iron pipe, L.S. 4403

REFERENCES

- (1) Highland Map of Cressey Colony, 7 O.P. 14, M.C.R.
- (2) Parcel Map for Jantz & Lopez, 75 P.M. 32, M.C.R.

BASIS OF BEARINGS

S. 89°47'00" E. for the centerline of Eucalyptus Avenue as shown on the Highland Map of Cressey Colony, Volume 7 of Official Plats at Page 14, Merced County Records.

