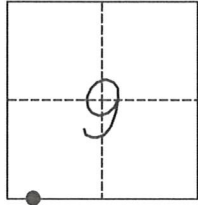


# CORNER RECORD

Agency Index 295-F  
Document Number \_\_\_\_\_

City of \_\_\_\_\_ County of MERCED, California  
Brief Legal Description CENTER LINE MONUMENT AT INTERSECTION PALM AVE AND SANTA FE AVE



T.6S., R.12E.

### CORNER TYPE

Government Corner  Control   
Meander  Property   
Rancho  Other

Date of Survey JUNE 6, 2019

### COORDINATES (Optional)

N. \_\_\_\_\_ E. \_\_\_\_\_

Elevation \_\_\_\_\_

Units Metric  U.S. Survey Foot

Horizontal Datum \_\_\_\_\_

Zone \_\_\_\_\_ Epoch Date \_\_\_\_\_

Vertical Datum \_\_\_\_\_

Complies with Public Resources Code §§8801-8819

Complies with Public Resources Code §§8890-8902

PLS Act Ref.:  8765(d)  8771  8773  Other:

Corner/Monument:  Left as found  Established  Rebuilt  Pre-Construction  
 Found and tagged  Reestablished  Referenced  Post-Construction

Narrative of corner identified and monument as found, set, reset, replaced, or removed:

See sheet #2 for description(s):

*MONUMENT MAY BE DISTURBED DUE TO CONSTRUCTION*

### SURVEYOR'S STATEMENT

This Corner Record was prepared by me or under my direction in conformance with

the Professional Land Surveyors' Act on AUGUST 7, 2019

Signed [Signature] P.L.S. or R.C.E. No. 9417



### COUNTY SURVEYOR'S STATEMENT

This Corner Record was received AUGUST 7, 2019

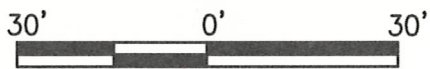
and examined and filed AUGUST 19, 2019

Signed [Signature] P.L.S. or R.C.E. No. 8664

Title COUNTY SURVEYOR

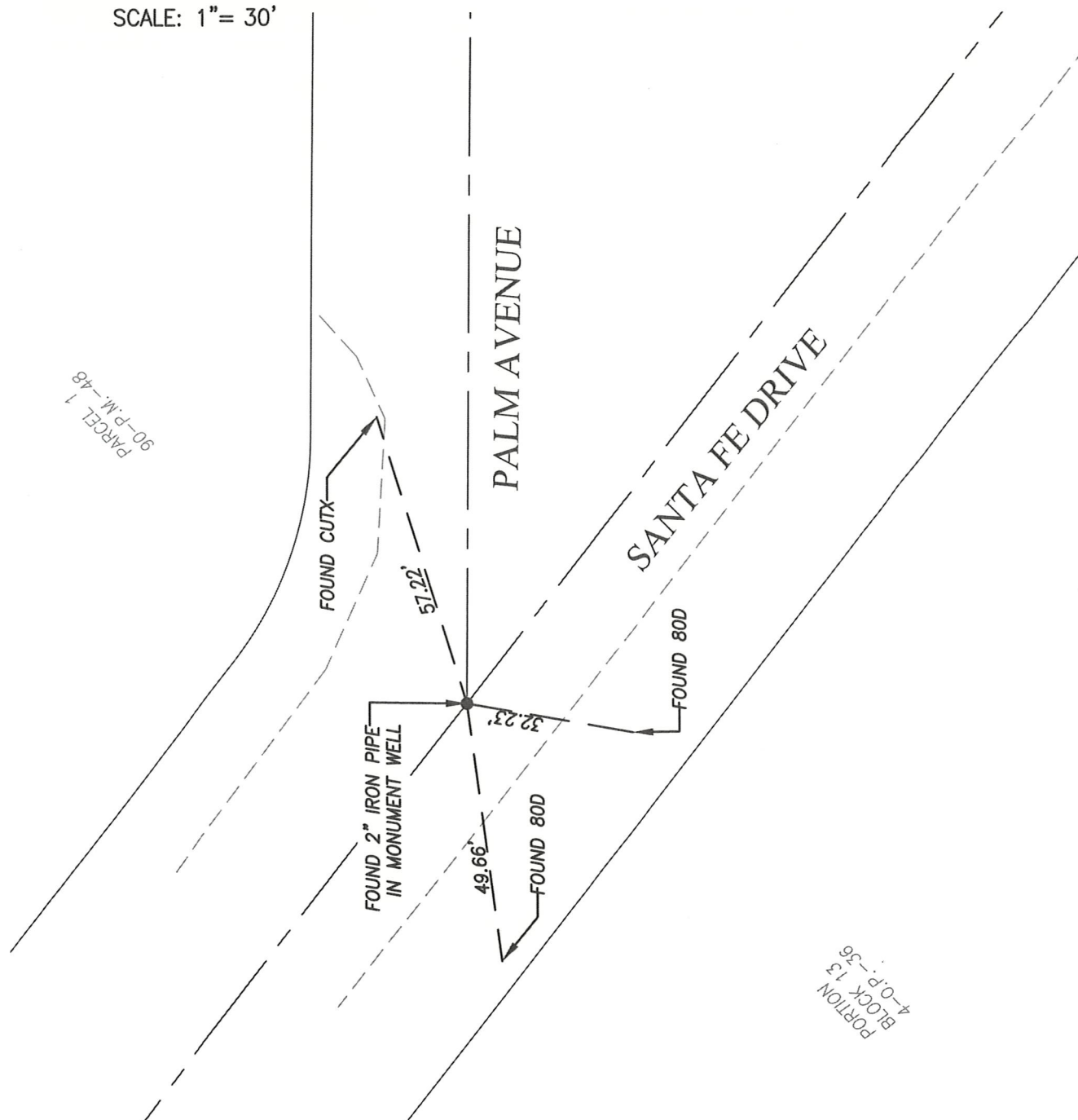
County Surveyor's Comment





SCALE: 1" = 30'

PARCEL 1  
90-P.M.-48



PORTION  
BLOCK 13  
4-O.P.-36