

CORNER RECORD

Document Number

291-Y

City of _____

County of

Merced

, California

Brief Legal Description

Southwest Corner of Lot 90, 4 O.P. 27 M.C.R.

A.P. NO.

CORNER TYPE

COORDINATES (Optional)



6/12

Government Corner Control

Meander Property

Rancho Other

Date of Survey 1/04/16

N. _____

E. _____

Zone _____ NAD27 NAD83

NAD83 Epoch _____

Elev. _____

Vet. Datum: NGVD29 NAVD88

Meas. Units: Metric Imperial

Corner

Left as found



Found and tagged



Established



Reestablished



Rebuilt



Identification and type of corner found: Evidence used to identify or procedure used to establish or reestablish the corner:

SEE SKETCH

A description of the physical condition of the monument as found and as set or reset: ^x

SEE SKETCH

SURVEYOR'S STATEMENT

This Corner Record was prepared by me or under my direction in conformance with

the Land Surveyor's Act on MAY 12TH 20 16

Signed Michael S. Morris P.L.S. or R.C.E. No. 8665



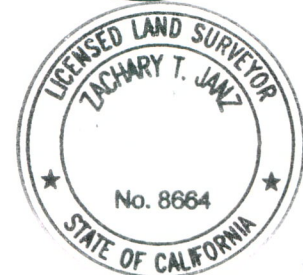
COUNTY SURVEYOR'S STATEMENT

This Corner Record was received MAY 12th 20 16

and examined and filed MAY 20th 20 16

Signed Zachary T. Janz P.L.S. or R.C.E. No. 8664

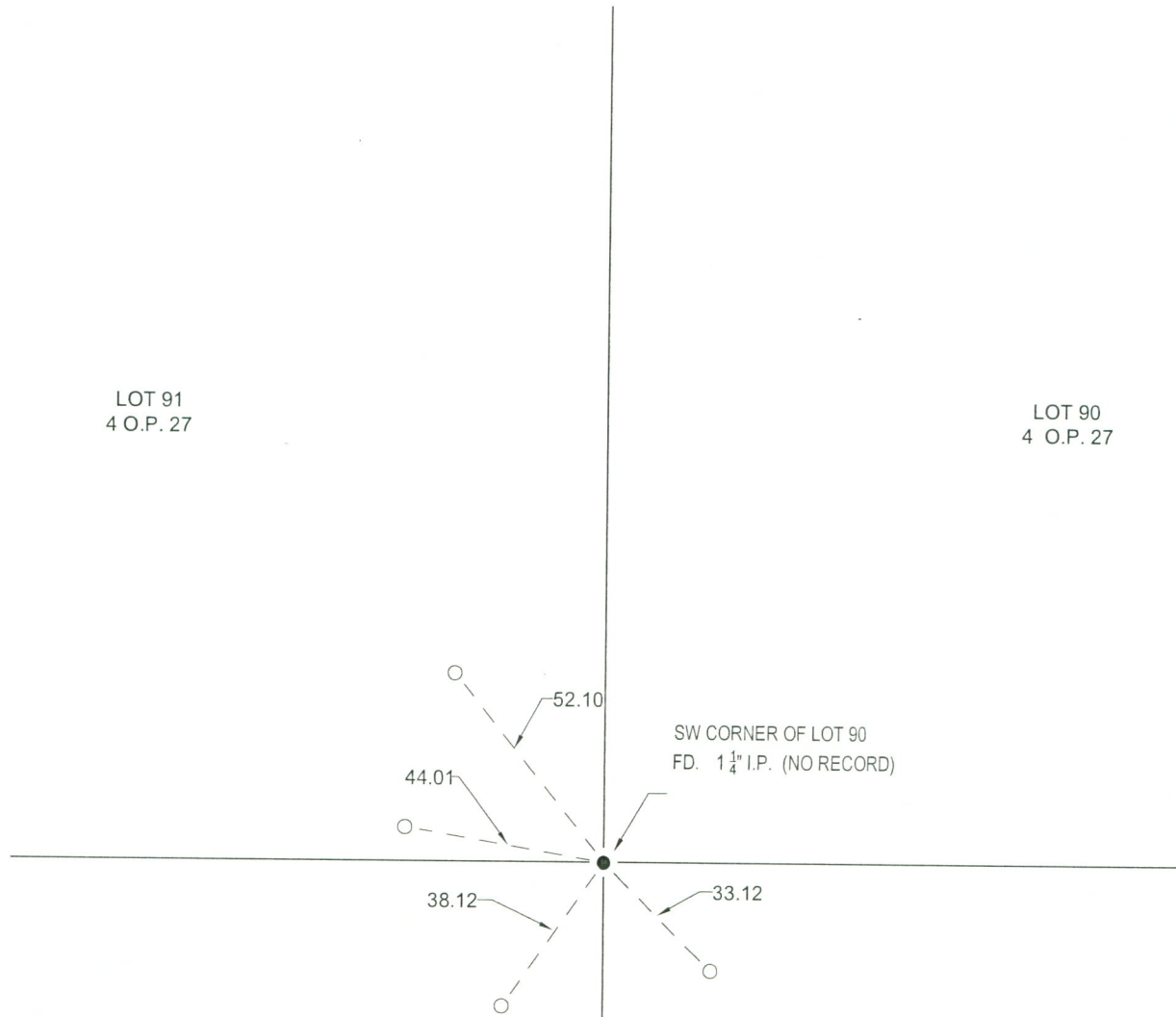
Title _____



County Surveyor's Comment: _____

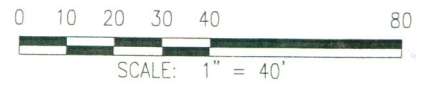
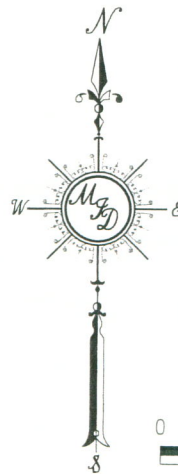
LOT 91
4 O.P. 27

LOT 90
4 O.P. 27



LOT 92
4 O.P. 27

LOT 93
4 O.P. 27



- SET $\frac{3}{4}$ " I.P. NO TAG
- FD. AS NOTED