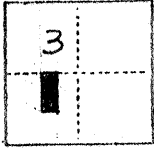


CORNER RECORD

SECTION 3

COUNTY OF MERCED T. 7 S P. 12 E M.D.B. & L. MERIDIAN CALIFORNIA
 CORNER TYPE: GOVT. CORNER MEANDER RANCHO CONTROL OTHER
 CORNER IDENTIFICATION — DATE OF VISIT _____ 19____



CORNER — LEFT AS FOUND FOUND AND TAGGED REESTABLISHED OBLITERATED CORNER REBUILT

PHYSICAL DESCRIPTION OF CORNER FOUND; EVIDENCE AND METHOD USED TO IDENTIFY OR REESTABLISH

A RESURVEY OF LOT 7 BY PRORATION BETWEEN FOUND MONUMENTS

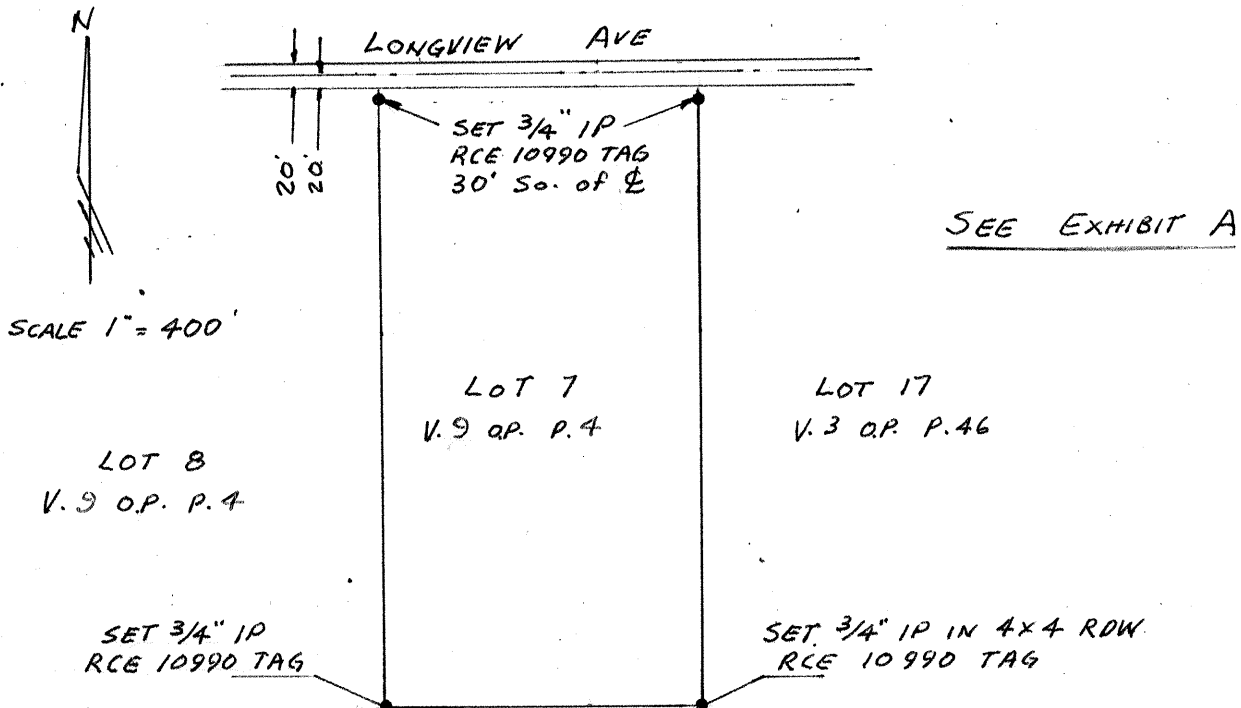
PHYSICAL DESCRIPTION OF MONUMENTS REBUILT OR PERPETUATED

SEE BELOW

CALIFORNIA COORDINATE SYSTEM ORDER: FIRST SECOND THIRD
 STATIONS USED: NGS (USC & GS) STATE COUNTY OTHER STATION _____ STATION _____
 ZONE _____ ELEVATION _____ NORTHINGS (Y) _____ EASTINGS (X) _____

(Fold)

SKETCH: (Include reference tie or witness points, remarks and topo of area)



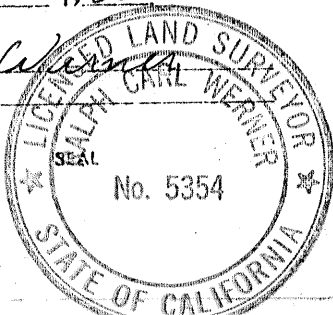
SURVEYOR'S CERTIFICATE

THIS CORNER RECORD WAS PREPARED BY ME OR UNDER MY DIRECTION IN CONFORMANCE WITH THE LAND SURVEYORS ACT

ON: Nov. 25 1986

SIGNED: Ralph Werner

L.S. or P.C.E. No.: LS 5354



COUNTY SURVEYOR'S CERTIFICATE

THE CORNER RECORD WAS RECEIVED 11/26/1986 AND EXAMINED AND FILED 12/11/1986

BY: Foy Tung
 TITLE: Deputy Co. Sur

DOCUMENT No. 286-U

STATEMENT ON BACK OF SHEET

YES NO

