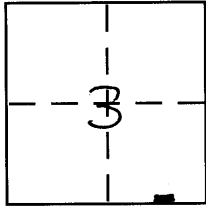


CORNER RECORD

Document Number 286-CC

City of _____ County of MERCED, California

Brief Legal Description PARCEL 2 45 PM 7 M.C.R. SEC. 3 1/2



CORNER TYPE

Government Corner Control
Meander Property
Rancho Other
Date of Survey 9/28/07

COORDINATES (Optional)

N. _____
E. _____
Zone _____ NAD27 NAD83
NAD83 Epoch _____
Elev. _____
Vert. Datum: NGVD29 NAVD88
Meas. Units: Metric Imperial

Corner - Left as found Found and tagged Established Reestablished Rebuilt

Identification and type of corner found: Evidence used to identify or procedure used to establish or reestablish the corner:
SEE SKETCH

A description of the physical condition of the monument as found and as set or reset: _____
SEE SKETCH

SURVEYOR'S STATEMENT

This Corner Record was prepared by me or under my direction in conformance with the Land Surveyor's Act on 11-6-07

Signed [Signature] P.L.S or R.C.E. No. _____



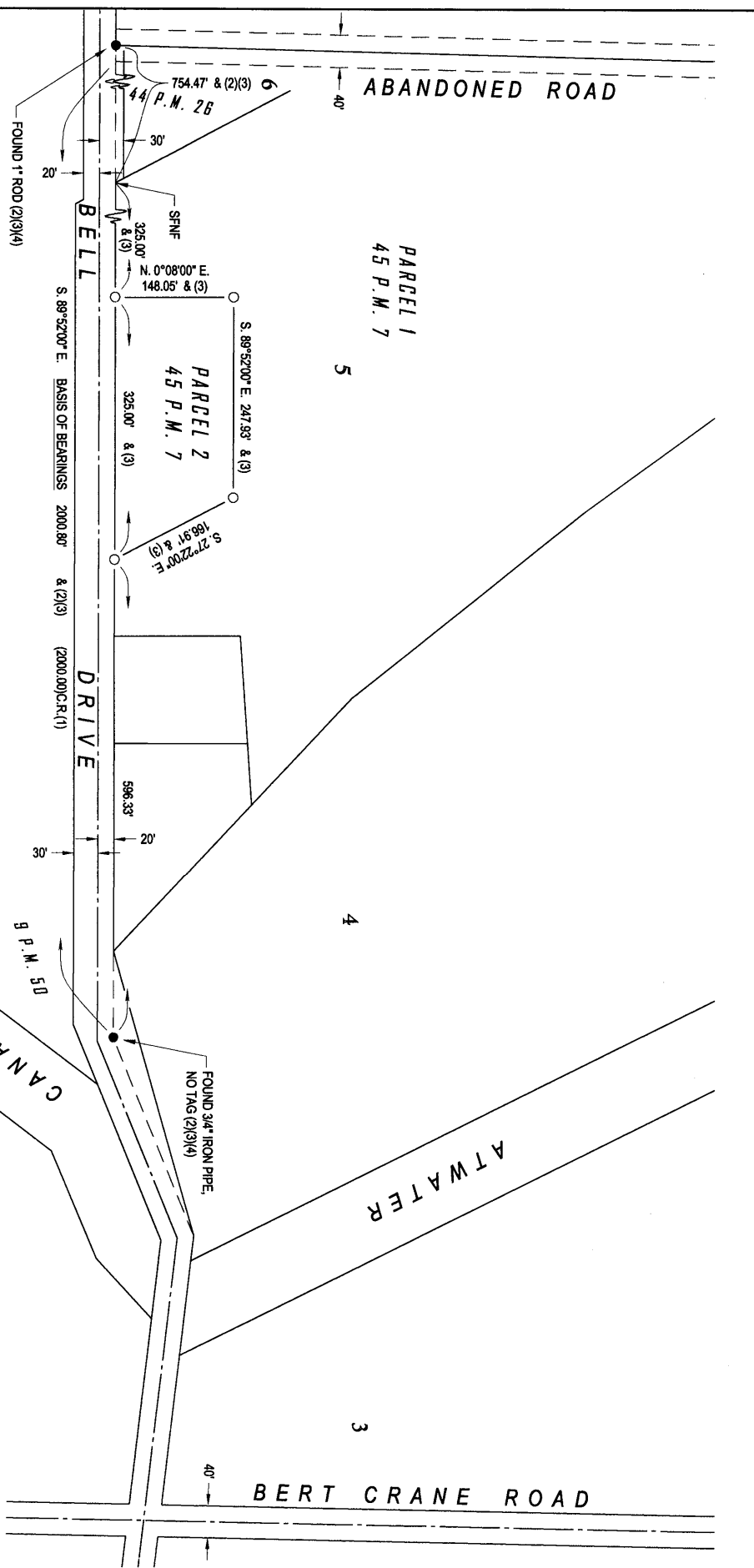
COUNTY SURVEYOR'S STATEMENT

This Corner Record was received November 6, 2007 and examined and filed November 9, 2007

Signed [Signature] P.L.S or ~~_____~~ No. 4895
Title Dep. County Surveyor



County Surveyor's Comment _____



- LEGEND**
- Found and accepted monument as indicated
 - Set 3/4" iron pipe, L.S. 4403
 - SFNF Searched For Not Found

- REFERENCES**
- (1) Map of Crocker Farms, 9 O.P. 4, M.C.R.
 - (2) Parcel Map for Richard Avellar, 44 P.M. 26, M.C.R.
 - (3) Parcel Map for S.V. Jennings, 45 P.M. 7, M.C.R.
 - (4) Parcel Map for G.E. Austin, 9 P.M. 50, M.C.R.

BASIS OF BEARINGS
 S. 89°52'00" E. for the bearing of Bell Drive as shown on the Map of Crocker Farms, Recorded in Volume 9 of Official Plats, Page 4, Merced County Records.

