

CORNER RECORD

COUNTY OF MERCED T. 7 SOUTH R. 12 EAST MOUNT DIABLO MERIDIAN CALIFORNIA

CORNER TYPE: GOV'T. CORNER  MEANDER  RANCHO  CONTROL  OTHER   
 CORNER IDENTIFICATION - DATE OF VISIT May 16 19 90

Sec. 2	

LOTS 176 AND 177 OF SIERRA VISTA SUBDIVISION No. 4  
 Vol. 7 O.P., Pg. 61, M.C.R.

CORNER — LEFT AS FOUND  FOUND AND TAGGED  REESTABLISHED OBLITERATED CORNER  REBUILT

PHYSICAL DESCRIPTION OF CORNER FOUND; EVIDENCE AND METHOD USED TO IDENTIFY OR REESTABLISH.

FOUND 3"x4" REDWOOD POSTS

PHYSICAL DESCRIPTION OF MONUMENTS REBUILT OR PERPETUATED.

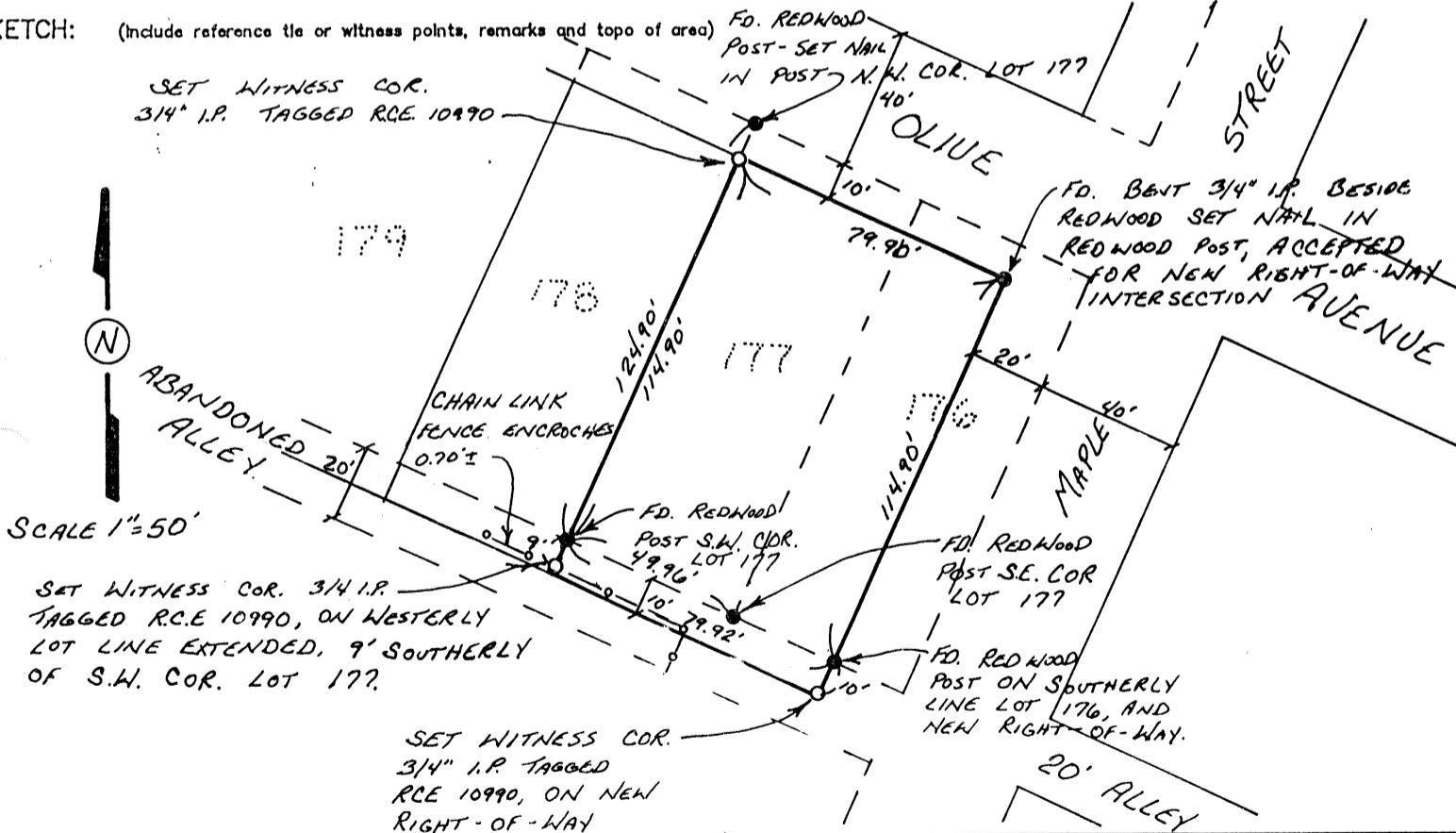
3/4" I.P. WITNESS CORNERS TO FOUND  
 3"x4" REDWOOD POSTS

CALIFORNIA COORDINATE SYSTEM ORDER: FIRST  SECOND  THIRD   
 STATIONS USED: NGS (USC & GS) STATE  COUNTY  OTHER  STATION \_\_\_\_\_ STATION \_\_\_\_\_  
 ZONE \_\_\_\_\_ ELEVATION \_\_\_\_\_ NORTHINGS (Y) \_\_\_\_\_ EASTINGS (X) \_\_\_\_\_

(Fold)

SKETCH:

(Include reference tie or witness points, remarks and topo of area)

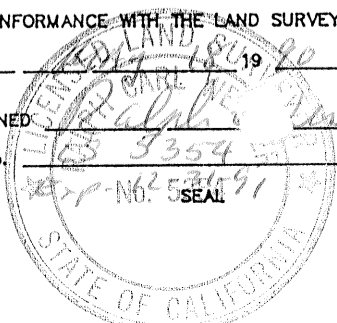


SURVEYOR'S CERTIFICATE

THIS CORNER RECORD WAS PREPARED BY ME OR UNDER MY DIRECTION IN CONFORMANCE WITH THE LAND SURVEYORS ACT ON \_\_\_\_\_ 19 \_\_\_\_\_

SIGNED: \_\_\_\_\_

L.S. or R.C.E. No. \_\_\_\_\_



COUNTY SURVEYOR'S CERTIFICATE

THE CORNER RECORD WAS RECEIVED \_\_\_\_\_ AND EXAMINED AND FILED \_\_\_\_\_ 19 \_\_\_\_\_ BY: Ray [Signature] TITLE: Deputy Co. Surveyor DOCUMENT No. 283 - [Signature] STATEMENT ON BACK OF SHEET YES  NO

